

WEATHER

Day	Oct. 18	Oct. 19	Oct. 20	Oct. 21	Oct. 22
Min.	58	58	58	58	58
Max.	70	70	70	70	70
Precip.	0.00	0.00	0.00	0.00	0.00
Wind	0.00	0.00	0.00	0.00	0.00
Humid.	0.00	0.00	0.00	0.00	0.00
Cloud	0.00	0.00	0.00	0.00	0.00
Visib.	0.00	0.00	0.00	0.00	0.00
Barom.	0.00	0.00	0.00	0.00	0.00

The Chelsea Standard

QUOTE

No style is good that is not fit to be spoken or read aloud with effect.

—William Hazlitt.

NINETY-NINTH YEAR—No. 18

16 Pages This Week

CHELSEA, MICHIGAN, THURSDAY, OCTOBER 24, 1968

10c per copy

SUBSCRIPTION: \$3.00 PER YEAR

Industrial Division Near 50% of Goal for Community Chest

Committees in Local Plants Hope To Complete Drive Next Week

The Community Chest United drive is enjoying a measure of success as, typically, industry begins to donate before any other segment of community life.

About \$8,000 of the \$18,000 target has been reported by the industrial committee headed by Bud Ringe of 3-D Sales, Inc. of the 25 plants in the drive.

A program for raising funds with the assistance and advice of a member of the industrial committee. The plants hope to complete their donations by next week.

The feather-shaped fund thermometer in front of the post office is being kept up to date by the Jaycees, who fill in the cumulative percentage of the \$23,500 campaign goal as the reports arrive.

One additional committee has been announced. Fred Mills, Chelsea school district business manager, will be heading the educational committee. He will be seeking donations from teachers and other school employees.

The drive will last until Nov. 1. The last week and a half tend to be the most profitable, according to campaign vice-chairman Dick Boss. Apparently the drive usually suffers from the all-too-human trait of procrastination. However, campaign workers are confident that the community will be able to achieve the goal.

The Community Chest drive helps Chelsea residents in several ways. It supports, partly or almost entirely, many worthwhile community and local groups. United fund is comprised of 38 individual health and welfare agencies, the eleven other beneficiaries of the drive also offer services on the local level.

In addition to the worthwhile recipients of the drive's funds it eliminates the necessity of each recipient collecting on its own, with resulting expense to the agency and bother to the donor.

Three of these recipients are the Michigan Children's Aid Society, the Chelsea Band, and the Catholic Social Service.

The Chelsea Band Instrument Fund claims \$500 for its share of the Community Chest proceeds. This money goes to buy a few new instruments for the band each year. Band members who cannot finish their own instruments are

Bank Building Will House New District Court

The building that housed the Chelsea State Bank until last February has been given to Washtenaw county for the purpose of establishing a district court in the Village of Chelsea.

The decision was made by the eight-member board of directors of the bank to be effective Jan. 1, 1969. Bank President Paul Mann explains that the terms of the contract specify that the building be used for a district court or for county business.

The old building at 122 S. Main is only a block from the new Chelsea State Bank that replaced it last spring. It has a history dating back to 1901 when it was built by Frank P. Glazier, bank organizer. After many mergers and closing, the Chelsea State Bank emerged. The building has always housed banks with the exception of a few years when it was used for offices of a cement company.

Citizens of Chelsea and other western townships of Washtenaw county will benefit if a district court is established here. An act of the legislature abolished the office of justice of the peace effective Jan. 1.

Hoping to make court visits more convenient, directors of the bank through Mann offered the bank to the County Board of Supervisors.

After sending a committee to inspect the building, the court, accepted it yesterday. Township supervisor Maurice Hoffman read the resolution Tuesday. The building is now formally turned over to the county. Chairman of the Board of Supervisors and the county clerk will sign the contract to make it legally binding.

The bank building has many features that will suit it to county use. One of the most important is available space for storage, badly needed by the county for valuable records. The building will probably be altered with the advice of an architect to fit the function to which it will be put.

The legislative action that led to the change in the court system abolished the office of justice of the peace and provided for his function to be taken over by six district courts. Three of these are already established in Ann Arbor. The act provided that court be held in Ypsilanti and Chelsea.

By providing the building, residents of the western section of Washtenaw county might have the added convenience of being served by a local court rather than having to travel long distances or face congestion and parking problems. This, according to Hoffman, was the purpose of the action.

Bulldog Grid Wins Halted By South Lyon

The league-leading Chelsea Bulldogs suffered their first defeat of the season Friday to a powerful South Lyon team. The 16-10 defeat leaves the Bulldogs once again in a tie for first place with the Saline Hornets.

Jim Wojciecki returned the opening kickoff 35 yards to the Chelsea 45-yard line. The Bulldogs rushed for 20 yards in the next three plays, with an offensive attack led by Craig Houle and Dave Conklin. The Lions recovered a Chelsea fumble on the Bulldog 40-yard line to gain possession of the ball.

The Chelsea defense was unable to stop the South Lyon offense as they covered a total of 40 yards in nine plays.

The touchdown came with 5:52 remaining in the quarter, as the South Lyon quarterback, Dave Brandon, ran in for the first scoring of the game.

The Bulldogs made a strong comeback in the second quarter with Quarterback Houle scoring an early touchdown on a quarterback sneak from the South Lyon two-yard line.

Houle's touchdown came on a 60-yard scoring drive which began in the first quarter. Tim Orbring booted the extra point to tie the two teams, 7-7.

The work of Mike Gaken, Mike Harvey, Dennis Brown and Jim Wojciecki on defense sent the Lions back for a loss on their first series of offensive plays. This forced them to punt with a 4-and-2 situation. The Bulldogs regained the ball on their own 37-yard line.

Craig Houle, Dave Conklin and Kerry Kargel led the offense in the next series of offensive plays. The Bulldogs contained their offense to the ground, rushing for a total of 48 yards and three first downs. With the ball on the South Lyon 15-yard line and a 3-and-5 situation, Houle threw an incomplete pass to Conklin.

With a 4-and-5 situation Tim Orbring booted a 31-yard field goal.

(Continued on page six)



VOLUNTEER PAINTERS: Chelsea Jaycees Auxiliary members wielded paint brushes to brighten the playground equipment at South school last Thursday. Red, blue and yellow is the color scheme that will brighten and help preserve equipment at South and, later, North schools. Those dapper ladies above, sporting coffee pots and paint brushes, are, left to right, Mrs. Richard McUmber, Mrs. Art Steinaway, Mrs. Fred Patterson, Jr., Mrs. Charles Koenn, Mrs. Robert Updegraff (back), Mrs. Donald Proctor and Davy Proctor.

Social Service Report Shows Increase in Families Served

The Board of Directors of the Chelsea Social Service met for a luncheon meeting in the agency's quarters in the Municipal Building Tuesday. Present were Mrs. E. W. Eaton, Mrs. Larry Hoffman, Mrs. P. G. Schable, Sr., and Arthur Schumuk as well as Louis Burghardt, Harold Jones and Charles Lancaster and the director, Mrs. Louis Ramp.

Reports read indicated that although social agencies operating in the Chelsea community have increased in recent years, the work of the local social service has continued at the same pace as when it was the only locally based private agency, with some increase in families served.

Twenty-four additional families were added to the rolls this year, bringing to 411 the number served since the inception of the agency in November 1959.

Chelsea Social Service differs from the other private agencies operating in the community in that they distribute small amounts of material assistance for people who are hard pressed financially. Help is given on an emergency basis when income will not cover need or when welfare assistance has not yet become effective.

Funds used by the Social Service are provided principally by the Community Chest with smaller amounts contributed by service clubs and individuals.

Social Service will continue to have charge of distributing Christmas gifts to needy children and their parents residing in the Chelsea school district. Last year 117 children, living in 37 families, received gifts in Chelsea.

Single adults will again be referred to the Ann Arbor Salvation Army, another recipient of funds from the Chelsea Community Chest.

Burghardt will continue as president with Mrs. Schumuk as vice-president and Mrs. Hoffman as treasurer. Mrs. Ramp will be the director, assisted by Mrs. David Colquhoun. Mrs. Floyd J. Riethmiller, Jr., was elected a director to replace Don Houle, whose term has expired.

The service was opened with a call to order by Clarence Pendley. Mrs. Thomas Harris, outgoing Worthy Matron, introduced Mrs. J. Wilbert Smith, installing officer, who introduced Mrs. Franklin Gee, installing marshal, Mrs. Robert Rust, installing chaplain, Shirley Smith, installing organist, and John Neudecker of Manchester, installing soloist.

Officers installed were Mrs. and Mrs. Donald O'Dell, Worthy Patron and Worthy Matron; Mrs. Howard Walz, associate matron; Wesley Ellenwood, associate patron; Mrs. Norman Schmidt, secretary; Mrs. Charles Spencer, conductress; Mrs. Claude Arnett, associate conductress; Mrs. Thomas Harris, marshal; Mrs. Lawrence Wacker, organist; Mrs. Clarence Pendley, blue ray of Adah; Mrs. K. P. McMannis, yellow ray of Ruth; Mrs. Harold Bair, white ray of Esther; Mrs. Ellis Boyer, red ray of Electra; Mrs. Wesley Ellenwood, warden; Mrs. Harold Bair, sentinel.

Other officers installed were Charles Spencer, American flag; Thomas Smith, Christian flag; Mrs. Thomas Smith, OES flag; Carl Stevens, Bible bearer.

Color rays who were present were installed as follows: Mrs. Elden Elsie, blue ray; Mrs. (Continued on page eight)

Kiwanis Club's Pancake Supper Coming Nov. 4

Chelsea pancake worshippers will be gathering for their annual eat-in at the Kiwanis pancake supper Nov. 4.

Chelsea High school cafeteria will be the place where hungry adults can eat all the pancakes, sausage, applesauce, coffee and milk they desire. Tickets are available from Kiwanis Club members or at the door.

Members of the Kiwanis club will be cooking sausage and flipping pancakes from 5:30 p.m. to 8 p.m. under the leadership of George Stauff, pancake supper chairman.

Funds from this event will be used for community projects such as the kid's parade and party Halloween night.

Mr. and Mrs. Derwood Prochnow of Chelsea spent last week in Gatlinburg, Tenn. and Lexington, Ky. as guests of Dr. and Mrs. Paul Hanawalt. The Prochnows have Col. and Mrs. N. H. Thompson of Alexandria, Va., as guests this week.

The club members will be able to pick up plants Oct. 25 from 10:30 to 11:30 a.m. and Nov. 8 from 12:45 to 1:30 p.m.

(Continued on page six)

School Board Defers Action On Old Jr. High

Sentiment Growing To Preserve Site For Community Recreation Needs

The Board of Education's decision to defer action concerning the bids for the old junior high school property came after various individuals and civic associations expressed interest in retaining the land for public use.

Bids were read at the board meeting Monday night, together with four letters indicating interest in using the property for public purposes. The Board refused the highest offer, a \$25,160 bid from William Freeman, and tabled action on the \$15,000 Village of Chelsea bid until the Nov. 4 meeting.

Chelsea attorney William J. Rademacher, in a letter to Board Secretary Charles Lancaster, requested that action be deferred for at least 30 days. He said that many civic organizations and individuals had approached him with the matter and were now investigating financing and other assistance that may be available to enable them to preserve the site for public use.

Donald Irwin, president of the school board, received a request from Richard Boss that the property be used "for public purposes, due especially to its central location." Boss was speaking on behalf of the Chelsea Recreation Commission, of which he is president.

The property is located on the corner of Park and East Sts.

Irwin also received requests from the Chelsea Jaycees and the Village Planning Commission. Don Proctor, Jaycees president, said his organization will support the Village Council in any attempts to keep the property in possession of the village. They are interested in "providing the village with a recreational area," consider the property ideal, and encourage the school board to seriously consider any Village Council offer to purchase the land.

There they will enjoy a musical program by the bands and glee clubs and cider. Prizes will be awarded by the program committee, headed by Jerry Niehaus. Prizes of \$3, \$2, and \$1 will be given for first, second, and third place in each category.

This year's general chairman Walter Zeeb expects a large crowd and has about 40 Kiwanians serving on committees in preparation for the evening.

Leaf Pick-up Starts

The Department of Public Works in Chelsea will start picking-up leaves Monday, Oct. 28. Persons wishing to have leaves collected should rake them into piles at the curb.

(Continued on page five)

Red Raspberries Yielding Second Crop

Edward H. Eastlee, 79-year-old retiree living at 628 S. Main St., reports that he has picked his second crop of red raspberries of the year during the past two weeks.

The retired locomotive engineer from California is living four doors from where he was born.

(Continued on page five)

Enthusiasm High Among Band Members

The approximately 370 members of the sixth, seventh, and eighth grade varsity bands are again selling candy bars and taking orders for fruit cakes to raise funds for summer band camp, new uniforms, and other band expenses.

This Band Booster annual sale began Oct. 21 and will continue through Nov. 4 according to sales chairman Mrs. William Blaess.

All parents of band members automatically belong to this group, which attracts about 50 active participants to its monthly meetings.

Treasurer Mrs. Fred Harris says that sales should be better this year than before. The club increased orders in anticipation of this.

The varsity band has new leadership this year. D. Keith Lawson has replaced former director Bruce Galbraith, who now occupies the position of Chelsea High school assistant principal. Lawson was formerly with Albion and Newbury High schools and attended Northern Michigan and Michigan State Universities.

He is assisted by Stuart Glazer, who does many of the arrangements performed by the band this year. He is a recent graduate of Eastern Michigan University where he was student assistant to band director Thomas Tyrn.

Lawson attributes the huge growth of the band, "about 2 1/2 times increase in four years" to the efforts of Galbraith. The band (Continued on page eight)

J. Trapp Cleared Of Forgery Charge

James Trapp, 25, was cleared of forgery charges Friday when a circuit court jury found him not guilty after a two-day trial before Judge Van Donelen of Hart.

Trapp was arrested Jan. 15 on charges of forgery concerning a pay-check for George Wright. The \$161.97 check had been stolen from a desk at Dana Corp., where it was being kept until Wright could claim it, and was cashed at Wonder Bar.

The person who accepted the check could not recall who cashed it and the entire case rested on the signature analysis of the State Police Crime Laboratory in Lansing.

Trapp is employed at Dana Corp. as a machine operator.

Dr. Joseph Fisher, chairman of the planning commission, said his organization feels it would be a "great tragedy" to lose possession of the land. "The recreation and community service potential of this land cannot be overemphasized," he said in a letter to Irwin last Thursday. He also favors purchase by the Village Council.

Halloween Party Slated Next Thursday

Costumes are being purchased or designed and sewn by Chelsea children and their parents in anticipation of the annual Kiwanis Halloween party and parade scheduled for next Thursday night.

Participants will meet at the old junior high school at 7 p.m. garbed in their costumes. There they will be given noisemakers and judged on the basis of four categories—most comical, most traditional, most original or spookiest. A panel of three discerning judges will select first-, second- and third-place winners for each of the categories, but children will be kept in suspense until after the parade.

From 7:30 to 7:45 p.m. Chelsea fire truck and school bands will lead the children's parade around the block, turning right on Park, right on Main, right on Middle and right on East to the parking lot.

There they will enjoy a musical program by the bands and glee clubs and cider. Prizes will be awarded by the program committee, headed by Jerry Niehaus. Prizes of \$3, \$2, and \$1 will be given for first, second, and third place in each category.

This year's general chairman Walter Zeeb expects a large crowd and has about 40 Kiwanians serving on committees in preparation for the evening.

Leaf Pick-up Starts

The Department of Public Works in Chelsea will start picking-up leaves Monday, Oct. 28. Persons wishing to have leaves collected should rake them into piles at the curb.

(Continued on page five)

Enthusiasm High Among Band Members

The approximately 370 members of the sixth, seventh, and eighth grade varsity bands are again selling candy bars and taking orders for fruit cakes to raise funds for summer band camp, new uniforms, and other band expenses.

This Band Booster annual sale began Oct. 21 and will continue through Nov. 4 according to sales chairman Mrs. William Blaess.

All parents of band members automatically belong to this group, which attracts about 50 active participants to its monthly meetings.

Treasurer Mrs. Fred Harris says that sales should be better this year than before. The club increased orders in anticipation of this.

The varsity band has new leadership this year. D. Keith Lawson has replaced former director Bruce Galbraith, who now occupies the position of Chelsea High school assistant principal. Lawson was formerly with Albion and Newbury High schools and attended Northern Michigan and Michigan State Universities.

He is assisted by Stuart Glazer, who does many of the arrangements performed by the band this year. He is a recent graduate of Eastern Michigan University where he was student assistant to band director Thomas Tyrn.

Lawson attributes the huge growth of the band, "about 2 1/2 times increase in four years" to the efforts of Galbraith. The band (Continued on page eight)

J. Trapp Cleared Of Forgery Charge

James Trapp, 25, was cleared of forgery charges Friday when a circuit court jury found him not guilty after a two-day trial before Judge Van Donelen of Hart.

Trapp was arrested Jan. 15 on charges of forgery concerning a pay-check for George Wright. The \$161.97 check had been stolen from a desk at Dana Corp., where it was being kept until Wright could claim it, and was cashed at Wonder Bar.

The person who accepted the check could not recall who cashed it and the entire case rested on the signature analysis of the State Police Crime Laboratory in Lansing.

Trapp is employed at Dana Corp. as a machine operator.

ATTEND NATIONAL FFA CONVENTION: Four Chelsea Future Farmers of America traveled to the National FFA convention in Kansas City, Oct. 15 to 18 with their advisor, Larry Lawson, to represent the 70 Chelsea FFA members. They are, bottom, from left, FFA secretary Ron Bollinger, Larry Johnson; top, from left, treasurer Howard McCalla, and president Loren Heller. The four Chelsea High school seniors stopped at the Ralston-Purina Experimental Farm in Gray Summit, Mo., and the Hereford-Association headquarters and Union Stockyards on their way to the convention. They attended the FFA national public speaking contest and toured the American Royal Livestock Exposition in Kansas City, and visited the Linton Charlottesville Ranch in Chillicothe, Mo. During the convention the delegates voted on national motions and exchanged new ideas to bring back to their individual chapters.



725 WAS THE MAGIC NUMBER for George Lawrence Tuesday night. He dwarfed his usual 185-game average by bowling a 725 series with games of 233, 258 and 234. He was bowling for the Schneider's Grocery team of Senior House league at Chelsea Lanes. Lawrence has bowled for 51 years and presently participates in the league.

When you run across an individual who thinks he knows it all the best way to enjoy yourself is to keep quiet and let him enjoy himself.

Twelve million children have not yet been vaccinated against measles. Have yours? If not, call the Washtenaw Association for Retarded Children, HU 2-0820.

INVITATION TO BID

The Village of Chelsea is accepting bids for construction of a Public Works facility to be located on village property on North Street. Plans and specifications may be obtained from the Village Clerk, George Winans, at Winans Jewelry Store. Bids will be accepted until 12:00 o'clock noon (EST) November 5, 1968.

VILLAGE OF CHELSEA

GEORGE WINANS CLERK

NEW FROM IDS



IDS NEW DIMENSIONS FUND

The objective of this mutual fund is to provide growth possibilities for investors. Normally the Fund will invest in common stocks of companies which appear to have a high degree of competence in technology, marketing or management. Such companies would tend to operate in areas where important economic and technological changes are taking place, thus offering potential for significant growth.

For a free prospectus, clip this coupon.

INVESTORS DIVERSIFIED SERV., INC.
DIVISIONAL SALES OFFICE
4601 W. SAGINAW, LANSING, MICH. 48917
I would like to have the free prospectus describing this "new dimensions" fund.
Name _____
Address _____
City _____ State _____ Zip _____

Or contact with this Divisional Sales Office may be made through local representatives:
R. W. EDER 479-7281
A. W. LOYD 665-7856

(Political Advertisement)

Re-Elect Drain Commissioner

JOHN H. FLOOK

The Man Who Gets Things Done!

17 Years Experience



Republican

OWEN DRAIN

An Unmatched Record of Accomplishment!

Simplicity SNO-Away

can pump water!
And snow doesn't get any wetter or heavier than that!



We actually dunked a 6 HP Sno-Away in a pool to prove there's no such thing as snow too heavy or wet for Simplicity power. It pumped out the water with plenty of power to spare! See the Simplicity Sno-Aways at your dealer. They'll tackle anything winter can deliver. And then some.

CHELSEA HARDWARE

110 S. Main Ph. GR 9-6311

Ted Sorensen Will Speak at Second Congressional Dinner

Theodore ("Ted") Sorensen, who served as Special Counsel to the late President John F. Kennedy, will be the speaker at a dinner honoring former Congressman Wes Vivian. Sorensen is author of the best selling and widely hailed book "Kennedy".

The Second Congressional District Dinner, an annual fund-raising event, will be held at the Michigan Union Sunday, Oct. 27, at 7 p.m. Preceding the dinner at 6, there will be a reception at which all of the guests will have the opportunity to meet and talk with Sorensen, former Congressman Vivian, and other distinguished guests.

Sorensen is presently a partner in the New York law firm of Paul, Weiss, Goldberg, Rifkind, Wharton, and Garrison, of which former UN Ambassador Arthur Goldberg is also a member.

Sorensen is, in addition, editor-at-large of the Saturday Review, and visiting lecturer in Public and International Affairs at Princeton University's Woodrow Wilson School. In addition to his book "Kennedy," describing his years as President Kennedy's special counsel, he is also the author of "Decision-Making in The White House" and many articles which have been published in Foreign Affairs Quarterly, New York Times Sunday Magazine, Redbook, and the Saturday Review.

He is a member of the Executive Committee of United Nations Association, a member of the Bar of the United States Supreme Court, and a Board Member of the Lawyers' Committee for Civil Rights Under Law.

In 1961, Sorensen was selected as one of the 10 Outstanding Men of the Year by the United States Junior Chamber of Commerce, and in 1964 he received the Brotherhood Award of the Massachusetts Committee of Catholics, Protestants and Jews.

Former Congressman Vivian expressed his great pleasure at having so distinguished a speaker appear on his behalf.

Tickets for the dinner and reception may be obtained from the Vivian Campaign Office, 314 S. Fifth Ave., Ann Arbor, or from Rosemarie Blake, 608-7483 or 608-5624.

The telephone number of Vivian Campaign Headquarters in Ann Arbor is 602-4473.

Some workers make more money than others because they keep their minds on the work they are paid to do.



TED SORESEN



GIRL SCOUTS
TROOP 98
Girl Scout Troop No. 98 met Wednesday at the Methodist church. Only 11 members were present. We hope that in the future this will not happen. We talked about challenges and what we will approach this year. We were told that each patrol would run its own meeting instead of Mrs. Satterthwaite or Mrs. Verchereau doing all the work. We discussed plans for the St. Louis School, but made no final decisions. We also talked about a hayride, though it is not completely planned. Dues and attendance were taken and the meeting was closed. Mary K. Slocum, scribe.

TROOP 82
Girl Scout Troop No. 82 opened their Oct. 18 meeting with a simple flag ceremony presented by Nancy Heppner, Mary, Kathy Pierce and Karen. The Pledge of Allegiance and Girl Scout Promise were given.

Refreshments were furnished by Mary Beth Allen and Sandra Crouch. The troop sponsor this year is the VFW auxiliary.

The girls divided into six patrols and picked leaders and assistants. They are Joanne Popovich and Duwana Villeneuve, patrol 1; Janet Speer and Kim Longworth, patrol 2; Mary Hume and Kathy Pierce, patrol 3; Sandy Crouch and Given Graham, patrol 4; Diane Zeeb and Sandy Norton, patrol 5; and Robbie Navin and Joyce Liebeck, patrol 6.

We then made our invitations and name tags for our Mother's Visit Oct. 30. Program parts were discussed with rehearsal planned for the next meeting. Sue Schuelke, scribe.

Pfc. Michael Slattery Awarded Combat Infantryman Badge

Pleiku, Vietnam—The Combat Infantryman Badge, mark of distinction for the fighting soldier, was awarded to Pfc. Michael D. Slattery at Pleiku, Vietnam, Sept. 24.

Pvt. Slattery, son of Dennis W. Slattery, 24 Clear Lake, Chelsea, Mich., is assigned to Company A, 2d Battalion of the 4th Infantry Division's 8th Infantry, as a mortarman.

CIBs have been awarded since late in World War II for sustained contact against an enemy in ground action. The badge is a blue rectangle with a silver rifle mounted on it and a curved wreath at the top. Subsequent awards are represented by stars in the center of the wreath.

His mother, Mrs. Muriel V. Slattery, lives at 4241 Hampton Blvd., Royal Oak.

School Board Briefs

At a regular Board of Education meeting Oct. 21, those present were Irwin, Lancaster, Powers, Taylor, Lewis, Koenig, and Hopkins. Supt. Cameron, Business Manager Mills, Principals Lane, Conklin, Wojciech and Benedict and Assistant Principal Galbraith. Guests include Mr. Ford of Washtenaw Community College, Joe Merkell, L. D. Ginn, William Freeman, Mrs. Bruce McCalla, Don Proctor, George Frisinger, Keith Boylan, and Tom Hallister.

The meeting was called to order at 8 p.m. by president Irwin. Bills on the old Junior High property were opened and read by secretary Lancaster. The following bills were submitted:

Village of Chelsea, \$15,000: William Freeman, \$25,150. Several letters were received by the Board of Education regarding the sale of the old Junior High school. After much discussion William Freeman indicated that he would withdraw his bid in favor of the Village Council.

A motion by Koenig, supported by Powers to go into executive session at 8:50 p.m. resulted in a split vote, ayes by Irwin, Lancaster, Powers, Taylor, Koenig and Hopkins and nays from Lewis. The meeting was called back to order at 9:20 p.m. A motion by Powers, supported by Hopkins, to accept the bid of \$25,150 submitted by William Freeman for the old Junior High resulted in ayes from Irwin, Powers, and Hopkins, nays from Koenig, Lancaster, Taylor, Lewis. A motion by Taylor supported by Lewis to accept the bid of \$15,000 submitted by the Village of Chelsea was discussed.

A motion by Koenig, supported by Lancaster to table action on the bid of the Village of Chelsea council until Nov. 4 resulted in ayes from Lancaster, Irwin, Koenig and Hopkins, nays from Powers, Taylor, and Lewis.

A motion by Lewis supported by Lancaster to place the text of all letters received by the board of education regarding the sale of the old Junior High in the minutes of the meeting and the school board briefs in The Chelsea Standard received all ayes.

A motion by Powers supported by Lancaster to pay general fund bills of \$6,085.60 resulted in all ayes. The treasurer's report was accepted as read. A motion by Koenig supported by Hopkins to pay Young & Ost, Inc. \$25,000 of the balance due on their contract was passed with all ayes.

Santa Claus Special Ship To Carry Parcels To Men in Vietnam

Tons of St. Nick's gifts will be going to members of the Armed Forces in Vietnam by special ship this year, thanks to a joint Pentagon-Post Office venture.

A fast U. S. cargo ship will be designated the "1968 SANTA CLAUS SPECIAL," sailing from Oakland, Calif., next month with Christmas parcels.

To meet the sailing deadline and assure pre-holiday delivery of gifts sent with surface postage, items should be mailed during the Oct. 14-Nov. 9 period.

They should be marked "SANTA CLAUS SPECIAL" just below the stamps.

The "SANTA CLAUS SPECIAL" will sail during the latter half of November and stop at Da Nang, Qui Nhon, Cam Ranh Bay and Saigon, Vietnam. It takes approximately three weeks for a fast ship to cross the ocean.

All gifts should be packed in strong containers with adequate cushioning and correctly addressed, including APO and FPO numbers.

There are several options available for mailing to the military which can save money. Post offices across the nation have free pamphlets available which outline the mailing programs for servicemen and women overseas.

Firemen Called to Robert Kaiser Farm

Chelsea firemen were called out twice last week, once Oct. 12 for a fire that destroyed a barn and corn crib and damaged a metal pole barn on the Boyce Rd. property of Robert Kaiser.

The barn, corn crib and contents were completely destroyed. Contents included 6,000 bales of hay, large quantities of corn, oats, ground feed, fertilizer, seven calves large hay equipment and various other items.

The cause has not been determined by Chelsea or Unadilla Fire Departments.

Oct. 15 firemen were asked to remove oil and gasoline that had fallen from a truck onto the intersection of McKinley and Dewey. Police feared that a cigarette or match might ignite the area or a vehicle would skid on the slippery surface.

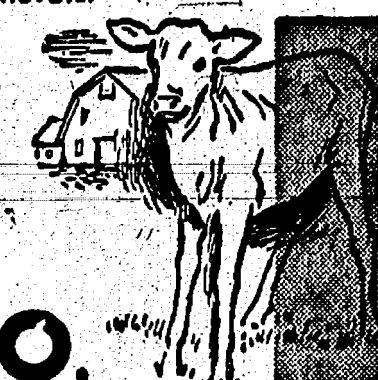
VACUUM CLEANERS
ELECTROLUX
SALES AND SERVICE
JAMES COX
Ph. 428-2931 or 428-8221
Manchester



Faster gains from better

FEEDS

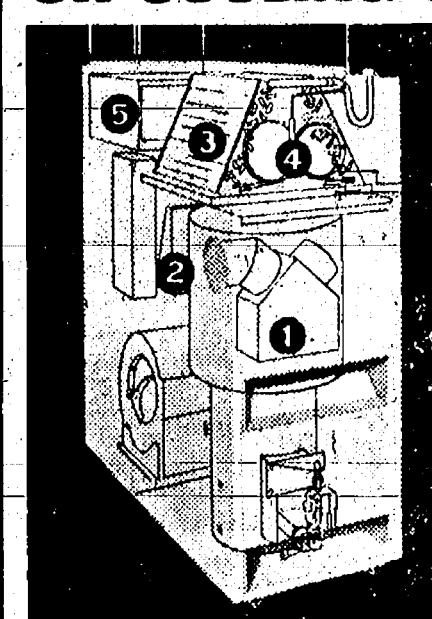
Calves get growing and gaining faster, on our balanced, fortified Calf Feed... enriched with needed vitamins, minerals.



Complete feeding rations for all your livestock, poultry.

FARMERS' SUPPLY CO.
PHONE GR 5-5511

DON'T BUY ANY HEATING OR COOLING SYSTEM...



UNTIL YOU SEE
WILLIAMSON'S
NEW
"FIVE-IN-ONE"

1. Heats the home
2. Adds moisture in winter
3. Cools the home
4. Removes moisture in summer
5. Electronically cleans the air

Williamson's new "Five-In-One" completely outdates all conventional heating and cooling systems. In just one cabinet, no larger than the average size warm air furnace, the "Five-In-One" includes all the necessary components to heat, humidify, cool, dehumidify, and electronically clean the air in your home. The "Five-In-One" will cost less to install and is far more attractive than components purchased separately and combined to achieve the same total comfort.

For gentle warmth in winter, pleasant coolness in summer, and air pure, fresh and properly moisturized all yearround, take a good look at Williamson's new "Five-In-One"—an entirely new concept in total indoor comfort.

JOHN W. STEELE

HEATING AND AIR CONDITIONING
Phone GR 9-4451 521 Garfield

(Political Advertisement)



'Unless we break the cycle of poverty and despair which grips the lives of millions of our fellow-citizens, we face escalating disorders. No amount of shouting for 'law and order' will change this fact. Improved education for youngsters, job-training and low-cost housing are the best anti-riot insurance this country can buy.'

Let's get action!

vote Vivian
for U. S. Congress/democrat

Citizens for Vivian, Gwen Nystuen, Treas., Box 1869, Ann Arbor, Mich. 48106

Ads
Taken
Till 5 p.m.
Tuesday

IT'S EASY TO
BUY-SELL-RENT-
HIRE & FIND WITH

WANT ADS

Just
Phone
GR 5-3581

WANT ADS

The
Chelsea Standard

WANT AD RATES

PAID IN ADVANCE—All regular advertisements, 50 cents for 25 words or less, each insertion. Count each figure as a word. For more than 25 words add 2 cents per word for each insertion. "Blind" ads or box number ads, 50 cents extra per insertion.

CHARGE REVERSING—At each insertion, with 15 cents bookkeeping charge if not paid before 5 p.m. Tuesday preceding publication. Pay in advance, semi cash or stamps and save 10 cents.

DISPLAY WANT ADS—Rate, \$1.10 per column inch, single column width only, 5-point and 14-point light type.

CARDS OF THANKS or MEMORIALS—Single column, 5-point, 14-point type. Insertion for 50 words or less; 2 cents per word beyond 50 words. Minimum, 1 inch.

COPY DEADLINE—5 p.m. Tuesday week of publication.

TRAVEL TRAILERS—13-ft. and up to 10x55 ft. trailers. John R. Jones Trailer Sales, Gregory, Mich. Phone 488-2555. 49tf

SEE US for transit mixed concrete. Klumpp Bros. Gravel Co. Phone Chelsea 479-2712, 4950 Loveland Rd., Grass Lake, Mich. 40tf

WORK SHOE
HEADQUARTERS

Famous Red Wing Brand
\$10.95 to \$23.95

Foster's Men's Wear 2tf

RUBBISH HAULING

Write
BILL MOUCH

19711 Doyle Rd., Gregory, Mich.
Phone Gregory 498-2852 32tf

CUSTOM SPRAYING—Voco interior white farm painting. J. L. Bird, phone 517-547-6447, Manitowish Beach. 34tf

FOR SALE—Trash drums, rabbit pens, typewriter, GE radio-phonograph. Phone 479-5531. 10tf

For your household and cosmetic needs call your
Fuller Brush Dealer

475-7130
429-8319 10tf

FOR RENT—Pleasant second-floor furnished apartment for two persons, 475-8469 after 6 p.m. 15tf

HELP WANTED—Apple pickers wanted. Apply Chapla's Orchard, 1817 Rank Rd., GR 9-6468. -19

ALLSTATE
INSURANCE

AUTO • BOAT • COMMERCIAL
LIFE • HEALTH • HOME
LIABILITY

Phone Even. or Week-ends for
N. H. MILES, Agent
GR 5-8334 16

APPLES, McIntosh, Jonathon and Delicious. Sweet cider, winter pears. Chapla's Orchard, open 7 days noon to 6 p.m. 1817 Rank Rd. GR 9-6468. -19

FOR SALE—Used Queen size Beautyrest interspring mattress, box spring, head board and bed frame. Price new, \$282.50. Will sell at \$100. In good condition. Call GR 5-1091. 18

FOR RENT—Ground-floor, air conditioned store building, App. 1600 sq. ft., formerly used for doctor's office. Call GR 5-4931 or 475-8021. -18

FOR SALE—4-yr.-old Corvair—ram. Eligible for registration \$30.—Reuben Lindemann, Phone 426-5094. 18

\$50 REWARD for information leading to the arrest and conviction of persons responsible for stealing a 1945 Ford farm tractor with attached dirt scraper. Tractor removed from farm near Fenton Sept. 7. Write to Box OC-17, care of Chelsea Standard, Chelsea, 20

WANT ADS

CAR RENTAL by the day, week, end, week or month. Full insurance coverage, low rates. Call Lyle Chriswell at Palmer Motor Sales, GR 5-3271. 35tf

REAL ESTATE
Need Listings
Lake Property - Farms
Vacant Parcels

LOCAL SALESMAN
H. T. HAYNES

13835 Sauer Drive, North Lake

Phone 475-7157

**EDWARDS REAL ESTATE
AND INSURANCE**

Phone 482-8570 31tf

See Us for
FORMAL WEAR

Rentals for all occasions.
5 new colors available.

Foster's Men's Wear 4

REAL ESTATE

Do you want a home or cottage on a lake, a farm or country home, a building site? We have them.

**Eugene R. Young,
Broker**

Phone 878-3792
Mary Allen, 879-3826
Virginia Visel, 426-2224 30tf

EXCAVATING

Basements, bulldozing, gravel, driveways and parking lots. Topsoil.

FREE ESTIMATES

**Deatrick's
Sales & Service**

Phone 475-8120 anytime 15tf

TREE REMOVAL DONE—Also

buyers of standing timber and walnut trees. Chelsea 475-7831. 34tf

WANTED—Steady employment driving ice cream truck and part-time plant work. Fine working conditions, good opportunity for veteran or man looking for change. Write Box SE 5, care of Chelsea Standard. 10tf

CARPETING
Odds & Ends Sale

USED CARPETING—13' 1" x 12' 2" green. New price \$250.00. On sale at \$99.50.

NEW CARPETING, ends of rolls—12' 2" x 15' 9", red. Original price \$145. On sale \$94.50.

9' 4" x 12' red variegated. Original price \$84.00. On sale \$59.95.

12' x 13' 8", beige. Original price \$138.00. On sale \$99.95.

12' x 9' 8", gold. Original price \$87.50. On sale \$64.95.

12' 9" x 15', green. Original price \$166.95. On sale \$129.50.

OZITE CARPETING ON SALE

In Sapphire, Indian Corn and Avocado. Reg. selling price \$4.85 per sq. yd. On sale at \$3.95.

MERKEL BROS.

Phone GR 5-8021 18

FOR RENT or option to buy—2-bedroom trailer, 2 acres of land, garage. Call after 7:30 p.m., Detroit 825-6281. 18

FOR SALE—Two Sealpoint Siamese kittens—female and male, child's Magnus console, electric chord organ and Wouter rocking horse. Call 475-8993 after 5 p.m. -19

WANT ADS

WORK SHOE
HEADQUARTERS

Famous Red Wing Brand
\$10.95 to \$23.95

Foster's Men's Wear 2tf

PATRICK & COOK—Free estimates on aluminum siding, gutters, awnings, additions, roofing and general maintenance. Porch railing, aluminum storm windows and doors installed. Please call Chelsea 479-4533. 11tf

BRITTANY PUPPIES for sale. Good pets, good hunting stock. Call 479-5881 after 5 p.m. 14tf

FOR RENT—Large apartment, furnished or semi-furnished. Could accommodate 2 adults. Couple preferred. 475-7658. 14tf

FRANK'S CARPET CLEANING—Modern equipment, free estimates. All work guaranteed. Call 475-8081 or 469-9668. -15tf

K & D Kitley
Sanitation

Septic Tanks cleaned and installed.

Servicing Waterloo area for 14 years.

Free Estimates
Phone Munnith 596-2186 -25

ATTENTION: Morality erects buildings all winter if you are in need of a commercial or agricultural building order before winter and want to save money. Quality materials and workmanship guaranteed. Call Petersburg 279-1855 collect or write to Box 84, Petersburg, Mich., for all your pole building needs see Morality Pole Buildings Sales. 10tf

SIDING, ROOFING and Remodeling since 1938. Trim work Alcoa. Wm. Davis, Phone 1-434-2538, Ypsilanti. -23

FOR SALE—Year-old female German Shepherd, AKC registered, all shots, excellent with children. \$75. 475-7236. 15tf

TAKE NO CHANCES with your carpet, when you want it restored to new life. Call Frank's Carpet Cleaning with dry foam cleaning that leaves your carpet soil resistant and moth proofed. All work guaranteed. For free estimate phone 971-3346 or write 2717 Cumberland, Ann Arbor. -18

THIS WEEKS
SPECIAL
'63 Fairlane 4-Dr.
\$195.00
A-1 USED CARS

'66 Fairlane 500 XL Hardtop

'65 Mustang Hardtop

'65 Galaxie 500 4-door

'65 Falcon Bus

'65 Ford Station Wagon

'65 Mercury 2-door

'65 Ford 4-door

'64 Ford 4-Dr. Hard Top

'63 Ford 6-Pass. Wagon

'63 Dodge 4-door

'63 Ford 2-door

'63 Falcon Wagon

'62 Ford 6-Pass. Wagon

'61 Ford 2-door Hard Top

'60 Ford 2-door

Thunderbirds

1968 Landau

1967 Landau

1966 Hard Top

1963 Hard Top

Trucks

'66 Ford 3/4 Ton

'66 Chev. 1/2 Ton

'64 Chev. 1/2 Ton

'67 Chev. 1/2 Ton

'61 Chev. 1/2 Ton

BEST
SELECTION
IN TOWN

PALMER FORD
Phone GR 5-3286
Open Mon., Wed. & Fri. Till 9:00 18

Imported Dutch
Bulbs

We still have a good selection
Now is the time to plant them

Chelsea Hardware 18

Knapp Shoes

Cushioned Comfort Shoes
for work, dress or recreation.
Call your Knapp Shoe representative 475-8933 after 4:30 p.m. -24

Post Construction

In need of a building?
Let SHARON VALLEY
BUILD IT FOR YOU

John Livermore

Grass Lake, Michigan 49240
Telephone 517-522-8258 18



"Alvin doesn't know what to do with himself since I got a dishwasher in the Standard Want Ads!"

WANT ADS

FOR REAL DOLLAR SAVINGS
Be sure and see us before you buy any new or used car. Palmer Motor Sales, Inc. Your Ford Dealer for over 50 years. 2tf

Real Estate
Listings Wanted

FARMS, HOMES and
LAKE PROPERTY

GREAT LAKES
REAL ESTATE

Ph. 789-5930, Ann Arbor
Ph. 428-6120, Manchester 12tf

FOR TRACTORS and equipment. Also New Holland machinery. Sales and service. Cobb & Schreier, Stockbridge, Ph. Ulysses 1-4525. 49tf

Septic Tanks
and Drain Fields

INSTALLED TO COUNTY CODE
SPECIFICATIONS

Septic tanks from 800 gal. to 2,000 gal. available for prompt installation.

HILLTOP PLUMBING

ROB SHEARS
201 S. Main Phone 479-3851 39tf

CHARINET for sale. \$65. HA 6-9347. 19

Good Selection of

Coveralls
and Winter Wear

For Hunters
and Outdoorsmen

at

Dancer's
Chelsea

18

UNICEF—4 out of every 5 children receive no medical care, either to prevent or cure illness, 3 out of every 4 children suffer from malnutrition. 19

WANTED—Full-time evening waitress, part-time week-ends, by the Paul Bunyan Restaurant, 5510 Jackson Ave. 19

WANT ADS

FOR SALE—White gas range, Tappan, in good condition. \$25. 475-7655. 17

Fall Is Here

WE HAVE:
PARKER LAWN SWEEPERS
FURNACE FILTERS
LAWN RAKES
STOVE PIPE
WINDOW COVERING
WEATHER STRIPPING

Chelsea Hardware

Phone GR 9-0311. 17

WANTED TO RENT—2-bedroom apt. or house. References. Call 475-7593. 17

Chelsea Area Homes

Eibler, Frisinger & St. Amour, Realtors

130 ACRE FARM—Excellent buildings, 3-bedroom home.

40 ACRE FARM—Modern 3-bedroom ranch home.

LAKE PROPERTY—Year Round Living.

—Cavanaugh Lake

—Half Moon Lake

—Cedar Lake

—Hi Land Lake

5 BEDROOM HOME—In Chelsea. Excellent location priced under \$28,000.

3 BEDROOM HOME—Early American in excellent condition. Fireplace, beautiful decoration.

Eibler, Frisinger & St. Amour
REALTORS
Corner Old US-12 and Main St.
Chelsea - 475-8681

Evenings:
Paul Frisinger, 475-4884
Robert Thornton, 475-8657
Herman Koenn, 475-7252 18

WANTED

Man or woman 45-65 who is interested in being your own boss. Must have good health, good credit, a car, and a desire to get ahead. Write to
Robert Miller
2818 Territorial Rd.
Leslie, Mich. 49251 -18

WANT ADS

CAR & TRUCK LEASING. For details see Lyle Chriswell at Palmer Motor Sales, GR 5-3271. 49tf

AIRLESS SPRAY PAINTING—Interior and exterior. Pinckney 878-8848. 25tf

USED TRACTOR TIRES—Large inventory on hand. Also used passenger truck & grade tires. Jackson Tire Broker, M-106, Munnith, Mich. Ph. 556-2925. 32tf

CLOGGED
SEWER

Reynolds Sewer Service

7+ Clean Sewers Without Digging
Drains Cleaned Electrically
FREE ESTIMATES
2-YEAR GUARANTEE
Phone Ann Arbor NO 2-6277
Sewer Cleaning Is Our Business—
Not a Sideshow 38tf

VACUUM CLEANERS—Electrolux authorized sales and service. James C. Co., Manchester, Ph. 428-2981 or 428-9901. 49tf

PIANO TUNING: Chelsea and area. Facilities for reconditioning and rebuilding. Used piano sales; reconditioned grand and uprights. E. Edmund, 496-4429. 60tf

FACTORY HELP WANTED—All categories. Apply in person. Fortune Industries, 11770 Dexter-Chelsea Rd., Chelsea. 42tf

REAL ESTATE
FOR SALE

NEW LISTING—3-bedroom older home in a pleasant residential section. 2 baths. Carpeting. Basement. Gas heat. Newly redecorated. \$17,500.

COUNTRY HOME—4-bedrooms. 2 full baths. Remodeled kitchen with built-in range, oven and dishwasher. Full basement. Breezeway, patio, large garage, 2 acres. \$55,000.00.

7 1/2 ACRES—All within the Chelsea village limits. Has village water, gas and electric and 745 ft. of railroad frontage. 3-bedroom house and garage included. \$28,000.

FOUR-BEDROOM older home. Full basement. 2-car garage. Shady lot. \$18,000.

BUILDING LOTS
EAST OLD US-12—2 acre lot, \$5,500.00.

NORTH LAKE AREA—Several to choose from, \$3,500 to \$4,500 with frontage on North Lake, \$6,000.

LAKEFRONT—2 1/2 acre with frontage on North Lake, \$6,000.

COMMERCIAL LOT—West Middle Street 68'x132' adjacent to business district.

15 ACRES OF WOODS—\$15,000.

CLARENCE WOOD
BROKER

446 Flanders St.
Phone 479-4603 18tf

WHEN YOU GIVE to UNICEF, you become part of UNICEF's world by helping other children. Even a small gift can do important things. 19

HOUSEWIVES—Part-time salad lady Friday, Saturday and Sunday evenings. Transportation possible. Weber's. Call 665-3636. 18

FOR SALE—Wood Bros. 1-row corn picker. Ph. 479-7901. -19

WANTED TO BUY, spruce trees. Call 475-8120. 18tf

SPECIAL !

Men's Insulated

8 inch

Leather Shoes

Regular \$26.00
Star Brand
by International
Shoe Co.

Sale at \$17.77

Dancer's
Chelsea 18

EXCELLENT, efficient and economical, that's Blue Lustre carpet and upholstery cleaner. Rent electric shampooer \$1. Dancer's Chelsea. 18

FOR SALE—Draghopper for unloading corn. 475-5767. 18

Complete Line
of

Farm equipment, concrete silos, barn equipment, POST buildings

FOR A
BETTER BUILT BUILDING
AT A FAIR PRICE

Contact
John Livermore
517-522-8258

Sharon Valley Builders
Grass Lake, Mich. 49240 16

WANT ADS

MALE OR FEMALE full or part-time—Domestic, baby sitting, live-ins, receptionists, cooks, office secretaries, typists, nursing. Phone 683-8305. -19

JANITOR for Coln-On laundry. Must be mature, responsible man. Steady employment. Top salary. Good opportunity for retirees. For interview call 475-9891. 14tf

APPLES FOR SALE—Cortland, Jonathan, Snow and Spys. Cider on week-ends. Clarence Lehmann, Rt. 3, Grass Lake. GR 9-3598. -21

MATURE WOMAN wanted. Live-in. Duties include light house-keeping, preparing meals. May work elsewhere daytime. Call 479-7127 after Saturday. 17tf

FOR SALE—Pumpkins, Ann and Mary Kalmbach, 476 Pierce Rd. 18

FOR RENT—Two furnished apts. 1-bd. 1-bd. and 2-bd. ground floor 2-bedroom apt. with garage. Utilities included. 475-

WANT ADS

Men's Suit Sale

ON AT DICK BUTLER
THING O. P. S. IN GRAND
Latest styles and colors.
Gigantic big selection
\$50 men's suits now
for \$31
\$60 men's suits now
for \$31
\$70 men's suits now
for \$31
Suits thru 40. Regulars, long
sleeves. If you don't need two
bring a friend to divide the
and share the savings. Michi-
gan's best suit sale. Dick Butler's
S. Opposite Police Station in
Lodge, Mich. Open Friday
till 9. All other nights till 6.
Sundays 12 to 5. THIS SALE
LAST LONG — SO
RY!
ING MACHINE FOR SALE—
prox. 13 years old. Walnut
set with 2 drawers. Good con-
dition. Phone 479-4601. 19
WE MISS YOU? Jack Frost
Empty tanks are our spec-
ial. Ashland. Jerry Satter-
to. Phone 475-8042. 18

G. G. HOPPER

Building Contractors
Phone GR 5-5581
Gregory 488-2148

SALE—Ladies nylon insul-
jacket with hood, suede
length, white pile lining.
Tan poplin full-length
piled. Sizes 18, like new.
\$20 each. 426-4888 after
5. 19

SALE—Registered Alaskan
mutt, male, 11 months, old,
\$100. Registered Bud-
dypus stallion, \$85, or best
for both. 517-851-8348 Stock-
19

SALE—24" lawn sweeper, ex-
cellent condition. Call 475-5281
12 noon. 18

SES FOR SALE—New homes—
down payment on your lot.
Is open daily. Art Daniels
7030 Dexter-Pinckney Rd.
2-1006. 18

SALE—1966 Triumph motor-
cycle, 650 cc, like new, \$750.
362. 18

SPECIALS

Drum set \$275.00
After Organ \$629.00
After Organ w/ Leslie \$750.00
After Organ (used) \$595.00
Models from \$1,095.00
each included) Up
to Walnut console piano
each included) \$724.00
up Spinnet Fruitwood Piano
each included) \$559.00
All plan available on Pianos—
Band-Instruments.
E. ADVANTAGE OF OUR
STMAS LAY-AWAY NOW.
LNALLI MUSIC
Chelsea 475-7215 20

WANT ADS

FOR SALE—60 Chevy, good con-
dition. Runs great. Hardly any
rust 283 cu. in., standard shift. Ph.
475-8174 ask for Jerry. 18
FOR SALE—Gold couch and chair,
brown chaise, nylon fabric like
new, 2 end tables, one coffee table
with mar-proof top. GR 9-7051, 19
DRAFTS — Servicemen-on-
leave, students over 18, work a
day, a week or longer. Report 7
a.m. ready for work. Manpower,
Inc., 111 Miller. Ph. 685-3757. Ann
Arbor. 18
FOR SALE—1968 Chev. Bel Air,
4-door, 0-cylinder, \$950, 426-4888
evenings. 18
TWO FURNISHED APARTS, for rent,
one large and one small, includ-
ing utilities. 475-7658. 18
FOR SALE—Allis-Chalmers com-
bine, good condition. Also 9-foot
double disc, new last year. Call 428-
8100. 18
FOR SALE in Chelsea—Older type
home in nice condition. Reception
room, living-dining room, 8 1/2 bed-
rooms, 2 baths, kitchen with eating
space. Basement laundry room,
garage, 2 enclosed porches. Good
carpeting throughout. Priced for
quick sale or might consider rental
to responsible people. GR 9-6011.
18tf

ARABIAN COLTS and fillies for
sale. Registered 1/2, 3/4 and 3/8,
with papers. Used saddles also.
Phone 787-5406 Jackson area 617.
420

WANTED — Sleeping room. Call
479-5502. 18

ZUCKY LAKE FRONT cottage on
lot 100x150, 2-bedroom, shower
and hot water, all newly remodel-
ed. Secluded location, \$23,000.
Mary Walter broker, phone 426-
8188 Dexter. 19

HOUSE FOR SALE—Almost new
three large bedrooms, brick, car-
pet, on Portage Lake. Canal front
lot, 100x75; gas furnace, fireplace,
screen patio, utility room, bath and
half, \$25,000 terms. Mary Walter
Real Estate 426-8188, Dexter. 19

FOR SALE—1962 Dodge 2dr, 6-
cyl., auto trans. Good condition.
Ph. GR 9-1715. 18

PUMPKINS—Pick your own Sun-
day noon until 5 p.m. 1406 N. Fle-
cher Rd. Also winter squash. Ph.
475-8708. 18

FOR SALE—4-bedroom home in
excellent condition, best of neigh-
borhood, near schools and bus stop.
333 Elm St. \$20,000. Willis
Real Estate 313-475-8424 or area
517-522-8121. 18

TYPEWRITER REPAIR—Call after
5 p.m. 475-7539. 19

FOR SALE — German Shepherd,
AKC registered, 10 mo. male,
\$100; 1 1/2 yr. female, \$75. GR 9-
5166. Call afternoons. 19

WANTED — Light cleaning or
babysitting position. GR 9-7053
afternoons. 19

ANTIQUES, sectional sofa, TV, Hi-
fi, sewing cabinet, bike, camp
stove, 238 Harrison. Ph. 479-1923.
18

THANK YOU
We wish to thank everyone for
their kind thoughts and prayers
and cards and gifts sent to us
during our great loss. It was
deeply appreciated.
Mr. and Mrs. Dan Eder.

And Away You Go . . .

for miles of smooth
motoring after you
fill up with our
PURE gas and oils.
One stop here keeps you going safely,
surely. Try our speedy, friendly, com-
petent service. You'll come back again
and again!

PURE OIL PRODUCTS

IM'S PURE SERVICE
Batteries — Tune-Ups — Brake Service — Wheel Alignment
PHONE 479-3541 CHELSEA, MICH.

(Political Advertisement)

A Name to Remember for Law and Order

Robert FINK

For District Judge

20 YEARS JUDICIAL EXPERIENCE

"Another well-qualified candidate (repeat: you can vote
for three) is Robert V. Fink of Ypsilanti, who has served
as Circuit Court Commissioner for 20 years. That post,
too, will be replaced by a District Court on January 1; and
Robert Fink's record merits his election to the District
bench."

—Saline Reporter Editorial, Oct. 3, 1968

Vote the Non-Partisan Ballot

ROBERT V. FINK for DISTRICT JUDGE

NOVEMBER 5, 1968



JUNIOR VARSITY GRIDDERS: This power-
ful Junior Varsity line-up is still undefeated as it
faces Saline today in the last home game of the
season. Next week will find the JV's at Dexter for
their final game. Coach Jon Schaffner praises the
role the defense has played in Thursday's downing
of South Lyon 23-0. From left to right they are
Jack McClear, Larry Gorton, Jeff Bust, Rick West-
cott, Mitchell Heard, Jim Johnson; second row,
from left, Tom Harmon, Tom Lukaskak, Paul
Maurer, Mike Powers, Dale Robbins, Jim Wencel,
Dan Whittear; third row, from left, Dave Porath,
Bob Salyer, Roger Roark, John Taylor, Randy Seltz,
Jim Kinner; fourth row, from left, head JV coach
Jon Schaffner, assistant JV coach Tom Morrison,
Howard Treado, John Bassett, Chris Marzec, and
Mark Schultz.

Ripe Raspberries . . .

(Continued from page one)
and grew up. He raises "a little
of everything, including 12-foot
corn and hollyhocks, and a few
green peppers," and claims that
the climate here is conducive to
growing. In fact, that is one of
the reasons he returned to his
home town after 32 years in Cali-
fornia.

The other element that makes
Chelsea the "best little town in
America," Easton says, "is the
people." The Chelsea native lives
with his wife of 35 years, who
shares in his gardening, "as if
she could see" which she hasn't
been able to do for six years.

THANK YOU
We would like to thank all our
friends and neighbors for their
help during our recent fire, es-
pecially the Chelsea and Gregory
Fire Departments, who responded
so quickly.
Bob and Judy Kaiser.

THANK YOU
We wish to thank each and
every one for their acts of kindness
during my recent stay in the hos-
pital and since my return home.
All are very much appreciated.
Bernice and Stephen Baker.

Who can remember when double-
header ice cream cones were five
cents? And when you didn't have
five cents to buy one?

GENERAL BUSINESS SERVICES

Do you have a problem
with your business records?
CALL
DON BEACH
426-4834

POPE ON YOUTH
—Rome—Pope Paul IV, address-
sing thousands of Romans and
tourists, recently deplored ex-
tremism among youths today and
called their riotous demonstra-
tions "explosions of folly." He
charged that contemporary society
triggered some of the students'
riots.

To get full return for the money
you spend on clothing make a
clothing plan, watch price and
quality, and then care for gar-
ments properly.

TOP TRUCK CENTERS
The largest city trucking center
is Chicago which is home for 112
carriers. New York City ranks
second with 104 carriers, and Los
Angeles is third with 85.

With Vonda Kay will be Billy
Zeoli. He is president of Gospel
Films International, Grand Rap-
ids. His film production has
taken him all over the world and
he has appeared in films himself.
He is in great demand for his
dynamic ability to communicate
with teenagers. His wit and hu-
mor compliment a keen knowledge
of the youth world.

The public is invited to this
rally. There will be no admission
charge.

THANK YOU
We wish to thank each and
every one for their acts of kindness
during my recent stay in the hos-
pital and since my return home.
All are very much appreciated.
Bernice and Stephen Baker.

THANK YOU
We wish to thank each and
every one for their acts of kindness
during my recent stay in the hos-
pital and since my return home.
All are very much appreciated.
Bernice and Stephen Baker.

THANK YOU
We wish to thank each and
every one for their acts of kindness
during my recent stay in the hos-
pital and since my return home.
All are very much appreciated.
Bernice and Stephen Baker.

THANK YOU
We wish to thank each and
every one for their acts of kindness
during my recent stay in the hos-
pital and since my return home.
All are very much appreciated.
Bernice and Stephen Baker.

THANK YOU
We wish to thank each and
every one for their acts of kindness
during my recent stay in the hos-
pital and since my return home.
All are very much appreciated.
Bernice and Stephen Baker.

THANK YOU
We wish to thank each and
every one for their acts of kindness
during my recent stay in the hos-
pital and since my return home.
All are very much appreciated.
Bernice and Stephen Baker.

THANK YOU
We wish to thank each and
every one for their acts of kindness
during my recent stay in the hos-
pital and since my return home.
All are very much appreciated.
Bernice and Stephen Baker.

THANK YOU
We wish to thank each and
every one for their acts of kindness
during my recent stay in the hos-
pital and since my return home.
All are very much appreciated.
Bernice and Stephen Baker.

THANK YOU
We wish to thank each and
every one for their acts of kindness
during my recent stay in the hos-
pital and since my return home.
All are very much appreciated.
Bernice and Stephen Baker.

THANK YOU
We wish to thank each and
every one for their acts of kindness
during my recent stay in the hos-
pital and since my return home.
All are very much appreciated.
Bernice and Stephen Baker.

Safety Course Scheduled for Bus Drivers

School bus drivers in Washtenaw
county will be meeting at Chelsea
High school Oct. 31 to continue
a school bus operation lessons.
The previous night meetings will
be held at Ypsilanti High school.
The classes, emphasizing defensive
driving in a program developed by
the National Safety Council.

The course has been presented
to more than a million private
car and commercial drivers in the
United States and overseas.

School bus drivers who have al-
ready completed the course in
other areas of Michigan have given
approval to the project describing
them as "right to the point" and
informative.

The meetings are a part of the
State-sponsored Michigan School
Bus Driver Education Program,
which is provided by the Washten-
aw Intermediate School District.
Instructors are drawn from East-
ern and Western Michigan Uni-
versities.

Homer Earl, director of the
programs, says that these meet-
ings will involve nearly all bus
drivers in this area. Central Michi-
gan University and Northern
Michigan University are also con-
ducting bus driver education pro-
jects in their service areas.

VFW Hosting Past District Officers At Dinner-Dance

Grand O'Hara Post No. 423, Vets-
terans of Foreign Wars and its
ladies auxiliary will host the third
annual sixth district past com-
manders and past presidents din-
ner-dance Nov. 2.

The event will begin with din-
ner at 6:30 p.m. at 314 E. Liberty
St., Ann Arbor. The Fred Bentz
band will provide after-dinner
music for dancing.

Past district commanders from
this area are Ken L. Hutzel, Post
No. 4076, Chelsea, Fred Bentz
from Post No. 423 Mrs. Robert
Berger, Mrs. DeWayne Wilson and
Mrs. Nelson H. Otto, Auxiliary
No. 423, are the past district presi-
dents.

Special guests will be Max Mc-
Carn of Mason, past department
commander; Robert Connolly, de-
partment chaplain; Mrs. Robert
Connolly, present district presi-
dent; Jerry Suatheaux, sixth dis-
trict commander; and Mrs. Sura-
taux from Mason.

Reservations are being taken by
Mrs. Nelson H. Otto, NO 2-7917.

New State Residents May Qualify for Special Presidential Ballot

Lansing—Qualified voters mov-
ing in or out of Michigan who
otherwise fail to meet residency
requirements may still cast their
votes for president.

These persons must apply for
special ballots the same as they
would for regular absentee bal-
lots. Deadline for application is
Nov. 2, at 2 p.m.

Secretary of State James M.
Hare reminded persons in these
categories of the elections law
which was passed in 1965 which
provides this two-way liberaliza-
tion of normal residency restric-
tions.

Hare explains that qualified
Michigan voters who move to oth-
er states but who cannot qualify
for residency because of lack of
time may now apply for the ab-
sentee voter ballots in Michigan
and cast votes for president.

On the other hand, new Michi-
gan residents of less than six
months who are qualified to vote
in another state may also cast
their votes for president under
Michigan law.

Hare listed another absentee
voter law which provides ballots
under emergency situations such
as sudden illness or death in the
family to qualified voters even
though the deadline for applying
for absent voter ballots may be
past.

THANK YOU
We wish to thank each and
every one for their acts of kindness
during my recent stay in the hos-
pital and since my return home.
All are very much appreciated.
Bernice and Stephen Baker.

THANK YOU
We wish to thank each and
every one for their acts of kindness
during my recent stay in the hos-
pital and since my return home.
All are very much appreciated.
Bernice and Stephen Baker.

THANK YOU
We wish to thank each and
every one for their acts of kindness
during my recent stay in the hos-
pital and since my return home.
All are very much appreciated.
Bernice and Stephen Baker.

THANK YOU
We wish to thank each and
every one for their acts of kindness
during my recent stay in the hos-
pital and since my return home.
All are very much appreciated.
Bernice and Stephen Baker.

THANK YOU
We wish to thank each and
every one for their acts of kindness
during my recent stay in the hos-
pital and since my return home.
All are very much appreciated.
Bernice and Stephen Baker.

THANK YOU
We wish to thank each and
every one for their acts of kindness
during my recent stay in the hos-
pital and since my return home.
All are very much appreciated.
Bernice and Stephen Baker.

THANK YOU
We wish to thank each and
every one for their acts of kindness
during my recent stay in the hos-
pital and since my return home.
All are very much appreciated.
Bernice and Stephen Baker.

THANK YOU
We wish to thank each and
every one for their acts of kindness
during my recent stay in the hos-
pital and since my return home.
All are very much appreciated.
Bernice and Stephen Baker.

THANK YOU
We wish to thank each and
every one for their acts of kindness
during my recent stay in the hos-
pital and since my return home.
All are very much appreciated.
Bernice and Stephen Baker.

THANK YOU
We wish to thank each and
every one for their acts of kindness
during my recent stay in the hos-
pital and since my return home.
All are very much appreciated.
Bernice and Stephen Baker.

CHARM BEAUTY SALON
4396 CLEAR LAKE ROAD
(Formerly of Grass Lake)
Two Operators - Hair Styling and Wig Service
PHONE 475-2700

Carpenter Help Wanted
Full-time carpenter. To erect farm buildings within 60-
mile radius of home. Top wages paid, fringe benefits.
Smiley Buildings, Inc.
Contact Rolly Cole, 313-475-8740

TODAY'S THOUGHT
By LOUIS BURGHARDT
Our national crime explosion is a horrible dilemma of our
days. Look at figures released by the F. B. I.
An 11% increase in crime in a year—above the previous all-
time high . . . Almost 2 out of every 100 people victimized . . .
There were 57 law enforcement officers killed . . . Daytime bur-
glaries up 140% in just 6 years . . . Narcotic violations up 82%
in 6 years . . . and up 28% last year over the year before . . .
Juvenile arrests for serious crime up 54% in 6 years; up 19%
in the 10 to 17 age bracket . . . Virtual anarchy and armed in-
surrection in 76 major riots in just 3 years and predictably more
to come.
Let's face it! We certainly are not heading toward a Great
Society. We ARE faced with a growing criminal, guerrilla society
instead. Something must be done - quickly . . . More facts will
be shown here next week. Watch for them . . . BURGHARDT
FUNERAL HOME, 214 East Middle St., Chelsea, Mich. Phone
GR 5-1141.

—SPECIALS—
ECKRICH
Skinless Franks . . . lb. 49c
12-OZ. PKG. NESTLE'S SEMI-SWEET
Chocolate Chips 39c
KEYKO
Margarine 3 lbs. 67c
46-OZ. CAN CHERRY, GRAPE, ORANGE
Hi-C Drink 2 for 53c
2-LB. PKG. CREAMETTES
Elbow Macaroni 37c
KUSTERER'S
FOOD MARKET
DIAL GR 9-3331 WE DELIVER

Need A Room? A Standard Want Ad Can Help!

**BANK AUTO
LOANS ARE
BEST!**
JUST MARRIED

ANY TRIP YOU MAKE will be more
pleasant, if the car you drive is fi-
nanced the Bank Way—economically,
conveniently and with local people.

5% on Certificates of Deposit
4% On Savings Passbook Accounts
per annum

CHELSEA STATE BANK

Member Federal Deposit Insurance Corp. Member Federal Reserve System

VILLAGE OF CHELSEA

PUBLIC WORKS DEPARTMENT

LEAVES
Pick-Up Will Start
MONDAY, OCT. 28
Leaves must be raked into the
street gutters for pick-up by the
village crews. No pick-up from
lawn extensions.



CARL M. SOEHNING

Grass Lake Area Sergeant Promoted At Okinawa Base

Pvt. Buckner, Okinawa—Carl M. Soehning, son of Mrs. Bernice Soehning, Route 3, Grass Lake, Michigan, was named an Army command sergeant major during ceremonies, Sept. 24 at Ft. Buckner, Okinawa.

The position features a distinctive new insignia and the new job title for selected top non-commissioned officers.

The insignia consists of the present sergeant major chevrons (three stripes over and three under with a star in the center) with the addition of a gold wreath surrounding the star. Holders of the old sergeant major chevrons will be known as staff sergeants major.

Command sergeants major are the principal enlisted advisors and assistants to commander from tactical battalions through Headquarters, Department of the Army.

Sgt. Soehning is assigned to the 9th Maintenance Battalion at Ft. Buckner.

His wife, Joyce, is with him at Okinawa.

Standard Want Ads Get Results!



MAUSOLEUMS ★ MONUMENTS
BRONZE TABLETS ★ MARKERS
BECKER MEMORIALS
6033 Jackson Road
ANN ARBOR, MICHIGAN

CONTINUE PROGRESS RE-ELECT

A. J. (Tony) PROCASSINI
Board of Trustees
Washtenaw Community College
NON-PARTISAN
22 YRS. INDUSTRIAL/EDUCATIONAL EXPERIENCE

KIWANIS PANCAKE SUPPER

CHELSEA HIGH SCHOOL CAFETERIA
**MONDAY NIGHT,
NOVEMBER 4**
Serving 5:30 to 8:00 p.m.

All You Can Eat!

Pancakes, Sausage, Applesauce, Coffee or Milk.

Adults and Students over 12: \$1.25

Students under 12: 65c

— SPONSORED BY —

KIWANIS CLUB OF CHELSEA

All Proceeds to Chelsea Area Community Projects.

Lyndon Zoning Plans Nearing Completion

The Lyndon Township Zoning Board has had several special meetings, in addition to the scheduled monthly meetings, to consider and study the proposed zoning ordinance for Lyndon township.

Don Bradley, of the Washtenaw Metropolitan Planning Commission has introduced and discussed many other pertinent matters. Bradley also meets with the Board the third Wednesday of each month on a regular basis.

The proposed Land Use Plan and Zoning Map will be of much interest to all residents and property owners of the township.

This proposed plan, in conjunction with the proposed zoning ordinance, will be molded to the satisfaction of the board and then scheduled for an open hearing.

A land-use plan is not an exact blueprint of future development but may be used to help the orderly development of future relationships between homes, schools, parks, stores, industry, and other units. It sets no timetable as to when the development should come, but indicates where various areas should be located.

It may be necessary to change or modify the plan. This would not be casual, but adhering to the basic concepts of a well thought out plan.

Zoning maps and their accompanying regulations are established by law. They set forth exact boundaries and legally affect all private uses of land. Therefore, zoning maps may differ in detail from land use plans, although they should be closely related.

The basic difference is that a land use plan depicts the community of the future and zoning maps are more closely related to the existing land use pattern.

Pvt. Preston Elliott Starts Basic Training

Preston Elliott, former Munnich resident, is now participating in basic training at the U.S. Army training center, Ft. Knox, Ky.

Pvt. Elliott is assigned to Company D, 10th battalion, fifth brigade.

Elliott, the son of Mr. and Mrs. Archie Elliott of Munnich, will be trained for two months in fundamental military skills and then receive an additional eight weeks of advanced instruction in practical on-the-job training to prepare him for a specialized military task.

Too many people go around saying it's better to give than to receive, but never find time to try out the system.

Gridders of the Week



DAVE CONKLIN has become a familiar name to Chelsea football fans. Wearing No. 12 jersey, he has seen plenty of action this year as quarterback and tailback. This 6' 0", 150-pound junior has been playing football since junior high. He was on the junior varsity team during his freshman year and was a varsity team member last year until he broke his thumb. Other sports interests include basketball and golf. He follows up both these interests by participating on the Chelsea High school teams. Physical Education and history are his favorite subjects in school. He is a member of the trip, varsity and golf clubs at school. He graduates he hopes to attend college. Dave is the son of Mr. and Mrs. Conklin, 889 McKinley Rd. He has a brother, Donny, in the eighth grade and a sister, Debbie, in the sixth grade at Beach Junior High school.

TOM SMITH, No. 22, is a senior flanker, seen on the Chelsea football teams for five of the past six years. Last year he held the position of defensive halfback. This 5' 8", 140-pound athlete was on the varsity track team last year, where he ran the 440. He manages to keep quite busy with the Key Club presidency and meeting of varsity, ski and trip clubs and student council. His favorite sport is skiing, which he pursues at Brighton. He also enjoys deer hunting with bow and arrow. He might be found working at Schumm's in his "spare" time. Next year will find Tom pursuing his architecture interest at Washtenaw Community College. Tom is the son of Mr. and Mrs. Charles Smith, 6893 Lingane Rd. His brothers and sisters include Rick, a sophomore at CIIS; Lynn, a fifth grader at North Elementary school; and Bob, a sophomore at Oakland college.

Latest Directory of Manufacturers Lists 15,416 Firms in State

More than 45.9 percent, or 7,189 of the 15,416 manufacturing concerns in Michigan, are located in the three county metropolitan Detroit area of Wayne, Oakland and Macomb counties. Over 21.7 percent, or 3,354 are located in Detroit. These figures are from newly revised and up-dated 1969 Edition, Directory of Michigan Manufacturers, published this week.

Michigan's Upper Peninsula with 15 counties, accounts for 581 manufacturers. The Lower Peninsula, with 68 counties, accounts for 14,835 manufacturers.

The Directory lists each manufacturer geographically (by city, town and county). Alphabetically and by products. In the products classified section—each manufacturer is listed under one or more of 3,033 product classifications.

The master geographical section gives a vivid description of each street address, city or town, zip code, location of branch plants, manufacturer with company name, names and titles of executive personnel, products manufactured, year established, number of employees—male and female, plus import-export information, and telephone numbers.

Another feature is the map of Michigan's 83 counties showing county seats and the facing page gives a list of the 666 manufacturing cities and towns by the county.

This will be the 14th edition of the Directory of Michigan Manufacturers. The Directory is revised every two years. The first edition was published in 1937 by Manufacturer Publishing Co., which since 1907 also has published Michigan Manufacturer and Financial Record.

Farm Bureau's FARMOWNERS Policy...



4 Coverages in 1 policy!
• House and Contents
• Farm Liability
• Farm Personal Property
• Barns & Outbuildings
Contact me today!
DAVID D. ROWE
157 E. Summit St., Chelsea
PHONE 475-8065
FARM BUREAU INSURANCE

Companies of Michigan

MILK

THE PROTEIN SNACK

Milk has what it takes to "power" a boy

Keep your junior space-man rocket-ready and rarin' to go by giving him lots of healthy, delicious milk every day.



Milk is Everyone's Favorite Health Drink!

WEINBERG DAIRY

QUALITY PASTEURIZED DAIRY PRODUCTS
Old US-12 Phone GR 5-5771

Small Game Hunters Report 'Fair' Success

Overenthusiastic hunters have faced fines for their "fowl" deeds this week, and if the rules are not confusing enough already, the Oct. 27 shift to Eastern Standard Time could baffle a few others.

On Sunday, Daylight Savings hours end and hunting hours will change to 7:30 a.m. through 5:15 p.m. for migratory birds and to 6 a.m. through 7 p.m. for small game and pheasant.

Conservation Officer Don Boyer reports that hunting pressure is about the same as last year, concentrated mainly in the Sharon and Waterloo areas. Hunters averaged one bird per hunter as checked. The squirrel population is good, and rabbits are better than last year. Pheasants seem to be about as plentiful as formerly.

Violations seem to be about as plentiful as formerly also. Judge C.A. Rogers administered the following fines for area hunting violations:

Michael F. Gardner, 20, Hastings, pleaded guilty to hunting without a duck stamp and was fined \$18 plus cost.

William G. Trekow, 37, Jackson, was fined \$23 plus cost for carrying a loaded gun in the car.

James R. Perry, 22, of 509 W. Middle, Chelsea, was fined \$18 for hunting water fowl with two guns.

Richard M. Youngblood, 17, of Royal Oak, was fined \$18 plus cost for hunting water fowl with an unplugged gun.

Judge Earl F. Doletsky heard the following cases of conservation violations:

Carl A. Kolander, 44, Dexter, pleaded guilty to hunting ducks before 11 a.m. on opening day and was fined \$18 plus cost and restitution for a duck.

Timothy J. Umstead, 19, of Ann Arbor, pleaded guilty to the same charge and was fined the same amount but with no restitution. The two men were hunting together, but Umstead had no duck.

William A. Negy, 23, Lincoln Park, was fined \$18 plus cost for hunting water fowl with a gun capable of holding more than three shells.

Craig Lambert, 19, Belleville, was fined \$18 for shooting ducks after 6:30 p.m. EDT.

Robert E. Steers, 34, Dearborn Heights, was fined \$18 and costs for hunting past 6:30 p.m. EDT.

Boyer advises hunters to make a note of the approaching time change and read their hunting regulations to avoid joining the annual rush to court for hunting violations.

When an individual decides that it is time to work for what he, or she, wants, the individual is making some progress in life.

YES

WE ARE MAKING
LONG-TERM FARM
REAL ESTATE
LOANS

SEE US

**Federal
LAND BANK
Association**

Ph. 665-6139 2221 Jackson Ave.
Ann Arbor, Mich. 48106
P. O. Box 1006

South Lyon Wins ...

(Continued from page one)

goal to give Chelsea a 10-7 lead over South Lyon at half-time. In the third quarter the Chelsea defense, led by Dennis Brown, Karsten Kargel and Tom Smith, put an abrupt end to the Lion's first series of offensive plays and sent them back for a loss.

The Chelsea offense started out strong with Houle passing to Wojciek for 10 yards and a first down. Houle rushed for 11 yards and a second first down. On the next two plays, Houle ran into trouble when he failed to find a pass receiver. The team was set back for an 18-yard loss.

The Bulldogs failed to pick up sufficient yardage for a first down and South Lyon gained possession of the ball again.

The Lions were set back for a loss by the defensive action of Karsten Kargel and Greg Stephens. The ball exchanged hands again but the Chelsea offense was unable to pick up enough yardage for a first down.

South Lyon gained possession of the ball and held it into the fourth quarter. Baran scored for South Lyon midway in the final quarter. Quarterback Brandon passed for the extra point.

The Chelsea offense went to the air in the final quarter with Houle completing two of five passes. The Bulldogs lost possession of the ball on South Lyon's 26-yard line and the Lions began a final offensive drive that worked the ball 60 yards up the field in 11 plays.

The defensive action of Mike Gaken, Greg Stephens and Dennis Brown, stopped the Lions on the Chelsea 10-yard line.

The Bulldogs lost two yards on the next two plays. On the third play, Conklin lost control of the ball in the end zone and South Lyon picked up two points on a safety, bringing the final score to 16-10.

The Bulldogs travel to Saline tomorrow evening to play the Hornets in what may be the most important game of the season.

Notice of Hearing on Petition of Village of Chelsea to Washtenaw County Board of Supervisors for Alteration of the Boundaries of the Village of Chelsea

Notice is hereby given that a petition will be presented to the Board of Supervisors for Washtenaw County, Michigan, on Tuesday, November 12, 1968, at 10:00 A.M. at the Supervisors Room in the Washtenaw County Building, Ann Arbor, Michigan, said petition requesting that the easterly, southerly and northerly boundaries of the Village of Chelsea be altered to include the premises described as follows:

A parcel of land in the northeast quarter of Section Seven (7), Town Two (2) South, Range Four (4) East, Lima Township, described as: Beginning at the center of Section Seven (7), Town Two (2) South, Range Four (4) East; thence easterly along the east and west quarter line 807.50 feet; thence north 2° 15' 30" west parallel to the north and south quarter line to the south right of way line of the New York Central Railroad; thence westerly along the south right of way line of the New York Central Railroad to the north and south quarter line; thence south 2° 15' 30" east along north and south quarter line 1683.00 feet to the place of beginning. Containing 35.06 acres of land.

which are presently a part of the Township of Lima, County of Washtenaw, State of Michigan.

The said petition was prepared pursuant to a resolution of the Council of the Village of Chelsea adopted at a regular meeting thereof held on the 15th day of October, 1968.

All parties interested may appear at the aforesaid time before the Board of Supervisors and be heard touching the said petition and concerning the proposed alteration of the boundaries of the Village of Chelsea.

VILLAGE OF CHELSEA

GEORGE WINANS, VILLAGE CLERK

KEEP A - PROVEN JUDGE ON THE BENCH!

The only candidate with actual experience and a proven record as a judge.



Municipal Judge
18 years
Veteran WW II
Lifelong
County Resident

**ELECT -
JUDGE EDWARD D. DEAKE
DISTRICT JUDGE**

Constables Association Seminar Slated

Michigan Constables Association will hold Dec. 14 and 15 at Kellogg Center of Michigan University. It was announced that the Washtenaw county division executive council will meet on Monday night.

The executive council will meet on Monday, Dec. 15, at the Kellogg Center of Michigan University. All constables in the state are urged to attend this seminar.

Washtenaw county division executive council will meet on Monday, Dec. 15, at the Kellogg Center of Michigan University. All constables in the state are urged to attend this seminar.

ONE-MINUTE SPORTS QUIZ

1. Where are the 1972 Olympics to be held?
2. Who won the Cooper-Middleberger fight?
3. Who is the middleweight boxing champion?
4. Who won the Patterson-Ellis fight?
5. For whom does Clint Jones play pro football?

Sports Quiz Answers...

1. Munich, Germany.
2. Henry Cooper, retaining his European heavyweight title.
3. Nino Benvenuti.
4. Jimmy Ellis by decision.
5. The Minnesota Vikings (NFL).

Hard work is probably a good thing for mankind, but there are many people who want very little of the good thing.

FULL-TIME POSITIONS

- ★ LIGHT PRODUCTION
- ★ CLERICAL

XEROX/UNIVERSITY MICROFILMS

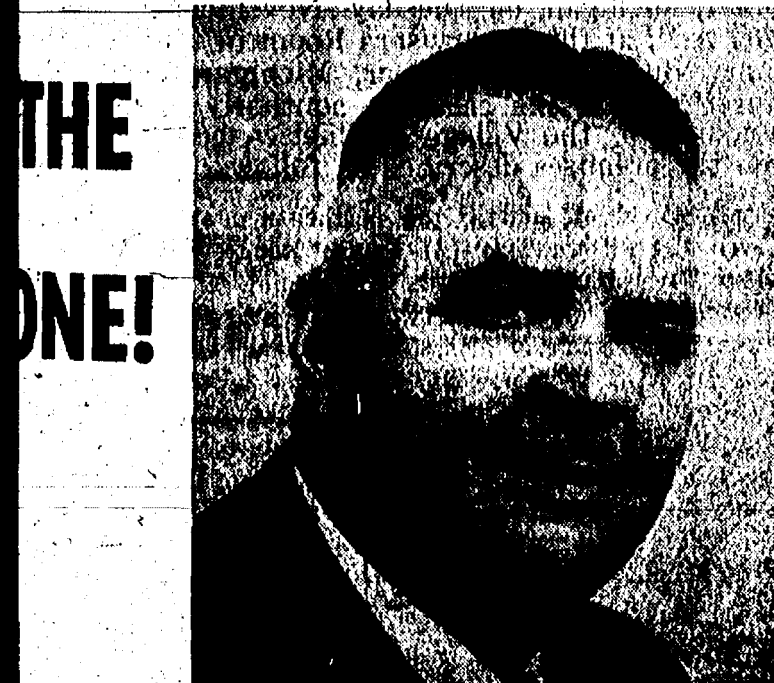
Presently has full-time positions available on both day and afternoon shifts. A progressive and growing unit of Xerox Corporation, University Microfilms offers on-the-job training plus definite opportunities for advancement. Modern, clean facilities, excellent salary and extensive company-paid benefits make Xerox/University Microfilms a very attractive place to build your career.

Applicants will be considered on the basis of ability and work record rather than education alone. High school graduation is not required.

APPLY IN PERSON TO EMPLOYMENT OFFICE
300 N. ZEEB RD., ANN ARBOR, MICH.

UNIVERSITY MICROFILMS A XEROX COMPANY

PETERSEN'S



ONE MAN OFFERING A NEW KIND OF LEADERSHIP. Strong, Decisive, Intelligent... there is no substitute for 24 YEARS LOCAL EXPERIENCE.

ELECT GEORGE A. PETERSEN SHERIFF
VOTE REPUBLICAN - NOV. 5
Paid for by Petersen for Sheriff Committee.

RE-ELECT THOMAS G. SHARPE

REPUBLICAN



REP. THOMAS G. SHARPE

Full-time Legislator

Your continued support will be appreciated.

State Representative

THE LANSING REPORT

senator
GIL BURSLEY

When Michigan voters appear at the polls on Nov. 5 they will be asked to vote on five state-wide proposals in addition to national state and local candidates. I will be discussing these issues in the coming weeks.

Proposal No. 1—Graduated income tax.
When the state income tax was passed in 1967 a part of the "package" was to submit to the people the question of whether they wished to remove the constitutional ban on a graduated tax. At present all we can legally have is a flat rate tax.

If passed, Proposal 1 would remove the following restriction from Article IX, Sec. 7 of the Michigan Constitution: "No income tax graduated as to rate or base shall be imposed by the state or any of its subdivisions." The proposal would also add this amendment: "An income tax at flat rates or graduated as to rate or base may be imposed by the state or any of its subdivisions."

Our present flat-rate tax is 2.6 percent. Thus each person in Michigan, after exemptions, pays 2.6 percent of his income regardless of how much he makes. If a graduated tax—similar to the federal income tax—were imposed, the percentage paid would be higher as income increases.

Opponents of the graduated income tax say that a flat-rate system is more equitable as it still accomplishes the goal of requiring those with greater income to pay a larger share of the taxes, but does not unnecessarily penalize a person of higher income. In other words, exemptions and other factors being equal, the higher income person will pay a greater amount because his income is greater even though the rate is the same 2.6 percent.

Also argued is the fact that moderate and higher income families would pay a great deal more under the graduated income tax system, though the low income person's share would not change significantly. This simply places as even heavier burden on those who are already paying most of the taxes.

Proponents retort that the new Michigan Constitution should be more flexible. In other words, it should make provisions which would allow the choice of having a flat-rate, graduated, or even no income tax at all, just as the old Michigan Constitution did.

Those favoring a graduated tax also say that the graduated tax would be more equitable to those middle income taxpayers who now, under the flat-rate, are hit the hardest, while some high and low wage-earners are touched the least.

Others believe that Michigan already has a quasi-graduated income tax, camouflaged by the

state intangibles tax, which imposes a flat 3.5 percent tax on certain income derived from dividends and interest. They argue that although neither the state income tax nor the intangibles tax is graduated, the amount paid by those people subject to the intangibles tax represents oppressive "double taxation" because they are paying both the state income tax and the intangibles tax on the same income.

A "Yes" vote would remove the present restriction against a graduated income tax from the Constitution. However, passage of the proposal would not make the amendment self-executing; that is, any change from flat-rate to graduated rate would require legislative action. Conversely, a "No" vote would leave the Constitution as it now stands, prohibiting a graduated income tax.

The 2nd proposal on the November ballot where Michigan citizens may vote "yes" or "no" involves Daylight Savings Time. Michigan had observed standard time for years until the federal government in 1906 passed the Federal Uniform Time Act, demanding that all states observe DST, effective April 1907, unless the state legislatures specifically exempted their states from DST. This means advancing the clock one hour nationwide from 2 a.m. on the last Sunday in April until 3 a.m. on the last Sunday in October. The federal act also revised the five time zone designations, placing the Upper Peninsula in the Central time zone and the remainder of Michigan in the Eastern time zone.

The Michigan legislature however, chose to exempt Michigan from the federal act by passing Public Act 6 of 1907 placing the entire state, including the Upper Peninsula in the Central time zone and the remainder of Michigan in the Eastern time zone and exempting the state from Daylight Savings Time.

But a citizens petition drive gained enough signatures, 123,000, to place the question on the ballot. This action suspended the legislative bill, returning the state to the original designation provided in the federal act until a final determination is made by Michigan voters. The success of this petition drive, which was conducted mainly in the larger cities, is the reason Michigan has observed DST during the past two summers.

Congress instituted nation-wide observance of DST during World Wars I and II to conserve fuel and electricity by making daylight hours more nearly coincide with the urban work-day.

During peacetime, adoption of DST was the option of the states or local area. After World War I, urban and suburban areas adopted a variety of summer DST schedules tailored to their particular needs and lack of peacetime regulation produced conflicting time systems not only nation-wide but also within each state and time zone. Continuing attempts to pass federal legislation to rectify this problem finally were successful in 1966.

Opponents of DST have traditionally included many people living in the rural areas as well as those owners and many parents of young children. These latter groups claim that DST unsettles their daily routines, and gives them too many light hours at the wrong time.

Legislative report bursley cont. Another argument against DST is that Michigan is geographically located—least partially—in the Central time zone instead of the Eastern zone. Therefore, when the state goes on DST, it is actually moving up two hours, sometimes called "double fast time," when it has already been one hour ahead of time by being in the Eastern zone.

Some proponents of DST say that the problems created by the lack of uniformity in standard time across the country is not only

inconvenient, but also costly for many firms. Thus Michigan's conformity with federal law would ease some of this confusion. Others who work inside all day point out that they enjoy having a little extra daylight in the evening for outdoor recreational activities, golf, little league ball, etc.

Traffic safety is argued as a factor. If you divide the day into three-hour periods—the hours of 6 p.m. to 9 p.m. have far more auto accidents than any other period. Many come from a drink on the way home or the cocktail hour. By maximizing daylight in these three hours many driving accidents, and fatalities, may be eliminated.

A "Yes" vote would mean that the entire state would observe DST for six months during the summer period and that lower Michigan would be in the Eastern zone all year around, while the Upper Peninsula would be in the Central zone all year round. A "No" vote would mean that the entire state would be on Eastern standard time all year, totally exempt from DST.

ESPIONAGE IN U. S.

The Federal Bureau of Investigation has reported that the Soviet Union, its satellite nations and Communist China have stepped up espionage efforts in the U.S. for the purpose of getting information on defense plans and military and scientific research.

34 Years Ago...

(Continued from page two) brief resume of the achievements in the House of Representatives, mentioning some of the prominent bills which he was instrumental in passing.

The Girl Scouts entertained their mothers at a pot-luck dinner Friday evening at the public school auditorium. Mrs. H. L. Blecker, chairman of the Girl Scout Council, opened the program by calling for a rising vote of thanks to Past Captain Florence Yager and presenting Gertrude Hindelang as this year's captain.

The Chelsea Freshman College is under way with the necessary enrollment for three instructors. The director of the college work is W. McClure and he also instructs in Political Science, History and Public Speaking.

Most Rev. Michael J. Gallagher, bishop of the Detroit diocese, conferred the sacrament of confirmation upon a class of 78 Sunday afternoon at St. Mary church.

The Carry On Class of the Methodist Episcopal church will be hosts to the Epworth Leaguers of Washtenaw county on Friday evening of this week.

Robert Fisher and Charles Downer visited the World's Fair during our week-end vacation. They both gave interesting reports on what they saw to the fifth grade.

Notice of Change of Hours:

SALYERS COLONIAL DINING

112 E. Middle St., Chelsea

Enjoy good eating in friendly Early American surroundings.

Open Monday through Wednesday, 10 a.m. to 9 p.m.

Closed Thursdays

Open Friday and Saturday, 10 a.m. to 10 p.m.

Open Sunday, 8 a.m. to 8 p.m.

OWNED & OPERATED BY
JEFF and MARILYN SALYERS

Now sale priced \$46⁹⁵



For just pennies a day, you can have your own night watchman every night. This Cabildo Gaslight is available at this special sale price for a limited time only. So better get in touch with us right now. Normal installation included and you can simply put the total on your monthly Gas bill. No money down and payments as low as \$2.00 a month. Eight other models to choose from.

Mail to: Michigan Consolidated Gas Company / 211 E. Huron Street / Ann Arbor, Michigan 48107

I'm interested in your specially-priced Cabildo Gaslight... or in one of the other eight gaslights and would like information on end costs.

NAME _____
ADDRESS _____
CITY _____ PHONE _____
Please have representative call week-night _____ weekday _____ Saturday _____

MICHIGAN CONSOLIDATED GAS COMPANY

Need A Room? A Standard Want Ad Can Help!

Keep Washtenaw Moving With the Republican Leadership Team

William F. Delhey has been PROSECUTING ATTORNEY since 1964, gaining statewide recognition for thorough, professional law enforcement. Washtenaw County needs his continued leadership.

John H. Flook, your DRAIN COMMISSIONER, has made his department one of the county's most productive. He will continue to work to control pollution, prevent flood damage, and protect public health.

George A. Petersen was your SHERIFF for six years, and he has 24 years of experience in the Sheriff's Department. Return him to office for efficient, capable, fair law enforcement.

Herbert S. Hicks, the incumbent COUNTY SURVEYOR, is a registered Civil Engineer and Surveyor, with over 40 years experience in the Ann Arbor area.

Robert Harrison, the Republican candidate for COUNTY CLERK, has eight years experience in county government. Now Chairman of the Board of Supervisors, he has also been Saline treasurer.

Sylvester Leonard has been COUNTY TREASURER for six years, and was a County Supervisor for ten years. He promises you continued efficient, courteous service.

Patricia N. Hardy has saved Washtenaw County taxpayers a quarter of a million dollars in her 13 years as REGISTER OF DEEDS. Continue her conscientious, efficient service.

VOTE EXPERIENCE AND LEADERSHIP

VOTE REPUBLICAN

MEN'S SUIT SALE

NOW ON AT DICK BUTLER'S CLOTHING STORE O.P.S. IN GRAND LEDGE

TREMENDOUS SELECTION

Our \$50 Suits Now 2 for \$51

Our \$60 Suits Now 2 for \$61

Our \$70 Suits Now 2 for \$71

All sizes thru 46. Regulars, Longs and Shorts. If you don't need two suits, bring a friend, divide the cost and share the savings. Michigan Bankard good at.

DICK BUTLER O. P. S.

Opposite Police Station in Grand Ledge, Mich. Open Friday nights till 9. All other nights till 6. Open Sundays 12 to 5.

Community Calendar



Dance sponsored by senior English classes at Chelsea High school in cafeteria after Dexter game Nov. 1. Benefit the Korvan sponsored child.

Chelsea Rebekahs will have a bake sale at Sylvan Town Hall Saturday, Nov. 2 beginning at 10 a.m.

PNG Club of Rebekah Lodge No. 130 at home of Mrs. Mac Packard 7:30 p.m. Oct. 20. Halloween costumes or pay forfeit.

Chelsea Rebekah Lodge No. 130 District officer's visitation Nov. 5 at 8 p.m. at the hall. Cleaning Bee Nov. 4. Contact Mrs. Donovan Sweeney to help with either.

Community Choir Monday 8 p.m., St. Paul's UCC.

World Community Day 1 p.m. Nov. 1 at St. Paul United Church of Christ.

OES Rummage Sale at Masonic Temple Nov. 15, 9 a.m. to 9 p.m.; Nov. 16, 9 a.m. to 1 p.m. For pick-up call GR 9-6531, or GR 9-4495.

Council on Adoptable Children monthly public meeting at 8 p.m., Friday, Oct. 25, at the Church of the Good Shepherd, 2145 Independence Blvd., Ann Arbor. Representatives of adoption agencies serving the county will speak about their respective agencies. The agencies are: Catholic Social Services, Michigan Children's Aid Society, and Washtenaw Department of Social Services.

American Legion Auxiliary Past Presidents pot-luck dinner at home of Mrs. Duane Hall, Oct. 29 at 6:30 p.m.

St. Mary Parish annual dinner, smorgasbord style, at Chelsea High school, Sunday, Nov. 10, serving noon, 1 and 2 p.m., adults \$1.75, children 75 cents. Public cordially invited. For reservations please call Mrs. Edward Orlovski, 170-7351.

Inquiries regarding the Chelsea blood bank may be directed to Harold Jones of Central Fibre Products in the event that Mrs. Dudley Holmes is unavailable.

Senior citizens would like your new left-over pieces of fabric for making lap robes. Leave at Korner House Tuesday afternoons.

American Legion and Auxiliary hospital equipment available by contacting either Mr. or Mrs. Eugene Martin, at 475-5807 after 4 p.m.

Cards every Thursday afternoon at Korner House.

Steven Harris Finishes Navy Basic Training

Seaman Recruit Steven F. Harris graduated from the Great Lakes Training Center last week and will arrive home tomorrow for a 14-day leave.

His parents, Mr. and Mrs. Fred Harris, Jr.; her mother, Mrs. L. J. Paul, and son, Robert Stofor, traveled to the Illinois training site for the graduation.

Harris, 19, has been there eight weeks and will be returning for schooling in nuclear power. He is a 1967 graduate of Chelsea High school.

DEATHS

Eder Twins

Michele Lynn and Marty Lee Eder, infant twins of Danny and Darlene Scott Eder, died shortly after birth. Both were born Oct. 12. Marty lived 38 hours and Michele lived three.

They are survived by their parents; maternal grandparents, Mr. and Mrs. Daniel L. Scott; and paternal grandparents, Mr. and Mrs. Leonard Eder.

Graveside services were held Oct. 14 at Oak Grove Cemetery, with the Rev. Daniel Kolin officiating. Funeral arrangements were by Staffan Funeral Home.

Enthusiastic Band . . .

(Continued from page one)

now claims a membership of 182. For a school the size of Chelsea High school this is unusually large.

Lawson has worked with the band through camp, preparations for all football games performances and trips to Albion College and Michigan State University. He shows an obvious liking for his position when he describes his group as "extremely outstanding" and says, "words cannot praise them enough."

The band will be giving pre-game and half-time performances at the last two home football games Nov. 1 and 8. The band builds a performance around a theme each week. For instance, the first game show was built around camp and the next performance featured a weather theme. At tomorrow's game, the theme will be "highlights of Michigan 1968." The details have been determined by students and directors working together.

VOTER ESTIMATION

The Census Bureau has estimated about 74 million Americans will cast votes in the next presidential election if the same percentage of the voting-age population goes to the polls as they did in the last election.

Church World Community Day Scheduled

Nine Chelsea churches will observe the annual World Community Day, sponsored by Church Women United, 1 p.m. Nov. 1 at St. Paul United Church of Christ.

The program is "New World A'Coming" according to chairman Mrs. Jay Hopkins. This service was written by two church women, one black and one white, in South Africa. It is a joint contribution to the World Community Day on the U.S. and to the "International Year of Human Rights," 1968.

The other eight churches participating in the program are First United Methodist, St. Barnabas Episcopal, Zion Lutheran, First Congregational, St. Mary Catholic, Waterloo United Methodist, North Lake United Methodist, and St. John's Lutheran churches.

There will be two ways church women may donate to Church World Service this year. Women who are skilled seamstresses may make an infant layette and disperse to be shipped overseas. Those not possessing sewing skill may take the alternative gift certificate plan. The certificate will give the buyer the choice of a blanket, five yard of fabric or undesignated material aid.

Offering receipts on World Community Day 1968 will go toward extending the Intercontinental Mission of Church Women United. One of the two major projects receiving assistance from this offering is a nutrition-education program under the Delta Ministry to supplement and strengthen medical and public health programs in this poverty area.

Another beneficiary of the offering will be bringing Christian women from Latin America to the U. S. to seek communication across gaps of language, nationality, race, economic class and political ideals. This is the second year of this "Direction: the Americas" program.

A nursery will be provided and there will be a tea after the program. All women in the community are invited.

JV Gridders Ramble Over South Lyon

The Chelsea Junior Varsity continued to show a strong defense as they downed a powerful South Lyon team, 28-0, Thursday evening.

The defense held South Lyon to just four yards on the ground and 65 yards in the air. Coach Jon Schaffner considers it a "closer game than the score indicates" since the score was 7-0 until late in the third quarter. Then the Chelsea defense pushed South Lyon back into their end zone for a safety to bring the score up to 9-0. Paul Maurer and Rick Westcott made the tackle for the safety.

Randy Seitz and Bob Wojcik recovered fumbles and Boy Salyer intercepted a pass to lead the defense. Schaffner noted that this is the second of the past three games carried by the defense until the last quarter.

The J-V's play their last home game of the season at 7 p.m. tonight against Saline.

Mr. and Mrs. George Knoll of Chelsea spent Friday to Monday at the home of her daughter, Mr. and Mrs. Beecher Risner, Jr., and family, in Trenton, O.



HALLOWEEN is known as a night of fun for both children and parents. It can also be dangerous, since it provides opportunities for persons inclined to bully or tease youngsters to do so. This Halloween the Chelsea Jaycees, under chairman Art Steinaway, will be on the residential streets of Chelsea wearing Jaycee jackets, wide white armbands and carrying flashlights. Parents of children participating in Halloween festivities should instruct them to go to men marked in this way for assistance. Police Chief George Meranuck has given his support to this project. His men perform a similar function, but cannot cover every street at once.

BIRTHS

A daughter, Kimberly Jane, to Mr. and Mrs. James A. Collins, Thursday, Oct. 10 at Sinai Hospital, Detroit. Maternal grandparents are Mr. and Mrs. Donald Dancer and paternal grandparents are Mr. and Mrs. William Collins.

A daughter, Ann Marie, Oct. 18 to Mr. and Mrs. Gary A. Albrecht.

Brownies . . .

Brownie Troop 169 met at the Congregational church Tuesday afternoon for an investiture program. Eight mothers of Brownies were there as 10 girls received pins. We planned a Halloween party for next week.

Marilee Simpson, scribe. Judging other people often prevents us from appraising ourselves.

Community Chest Campaign

(Continued from page one)

more in the spirit and purpose of Community Chest.

Michigan Children's Aid Society has a \$500 chunk of the Community Chest Drive funds. This money benefits Chelsea through the Washtenaw County office in Ann Arbor.

Lee Hout, executive director of this office, describes it as a state-wide non-sectarian child placement and adoption agency. It has provided service in Washtenaw county for 51 years. The four areas of program services include adoption, foster care, both pre-adoptive temporary and regular foster care, services to children who are abandoned, neglected, abused or otherwise in need of assistance, and services to unwed parents.

In Chelsea last year, the agency placed six children in foster care, provided services to three unwed parents and filled three of the eight adoption requests. These plus the other general services provided to the Chelsea area in 1967 totaled approximately \$3,100. The seven professional and three clerical workers in this agency return the Chelsea investment more than 10 times.

Catholic Social Service of Washtenaw county, based in Ann Arbor, claims \$400, this year. Social Worker Barbara Manina visits Chelsea one day a week to provide case work services. She visits, primarily, referrals from medical clinic and schools but referral can come from any person with a problem. It is necessary that persons concerned be Catholic.

Most of her cases deal with marriage, child care and teenage problems. She has a working knowledge of other community and area resources and is able to use them for the benefit of persons requiring. Catholic Social Service, in addition to counseling, provides adoption, foster care, and school placement, and maternal home placement services.

OES Installation . . .

(Continued from page one)

Henry Loggert, green-ray, Harold Scott, red ray. At the conclusion of the installation the Junior Past Matron, Thomas Harris, was presented Past Matron's Jewel by St. Smith. Mrs. Wesley Elmer, president of the Past Matron club, welcomed her and presented her with a gift on behalf of club. Thomas Smith presented Past Matron's Pin to Carolyn Pendley. Refreshments were served in the dining room.

Subscribe Today to The Standard

ATHLETIC EVENTS OF THE WEEK FOR CHELSEA HIGH SCHOOL

Thursday, Oct. 24—Junior Varsity Football . . . Saline, at home, 7 p.m.
Friday, Oct. 25—Varsity Football . . . at Saline, 7:30 p.m.
Wednesday, Oct. 30—Junior High Football . . . Brooklyn, at home, 4 p.m.

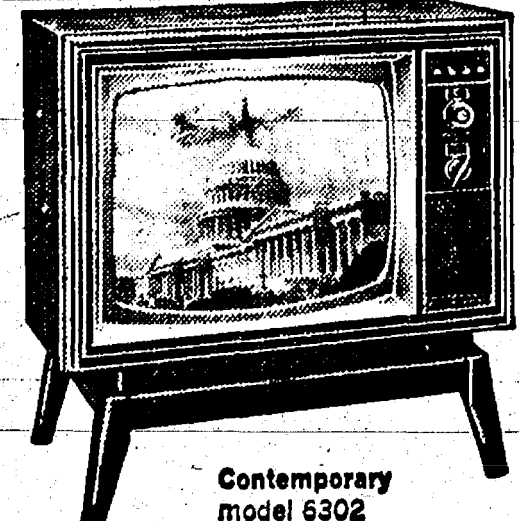
CAMPAIGN '68

SEE IT BEST!

with

Magnavox COLOR TV

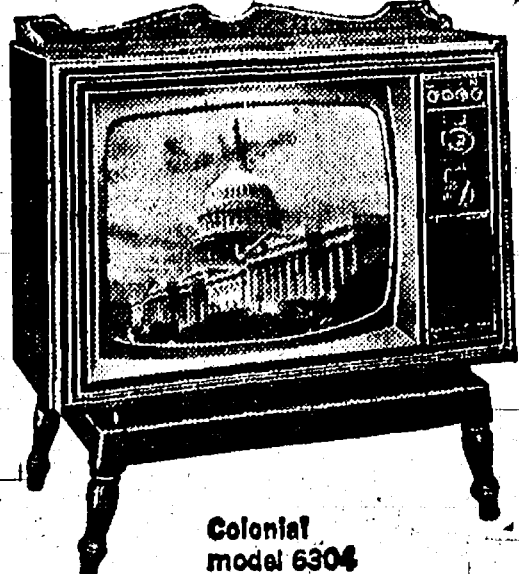
Enjoy either of these magnificent BIG SCREEN *Swivel* CONSOLES



Contemporary model 6302

Your choice

\$479⁵⁰



Colonial model 6304

Why settle for a small-screen model? Now you can own a magnificent Magnavox with Brilliant Color 226 sq. in. Big Rectangular Pictures—plus all the lasting reliability that only Magnavox brings you. Exclusive Chromatone adds depth and dimension; Quick-On lets pictures flash to life in just seconds; telescoping dipole antenna. Come in today—select from over 45 Magnavox Color TV models in a wide variety of authentic fine furniture styles.

★ **2-YEAR PICTURE TUBE GUARANTEE** ★

No Matter Where You Live or Where You Move—Anyplace in the U.S. . . your Magnavox Gold Seal Picture Tube Warranty is valid for 2-year! If defective material or workmanship cause failure in normal use, tube is replaced by the authorized Magnavox Dealer where purchased—or in any new service area you've moved to! In-home service-labor required to replace tube (carry-in service on model 6000 only) also furnished without charge for first 90-days.

Open Friday Evening Until 9. Close Saturday at 4 p.m.

FRIGID PRODUCTS

LLOYD R. HEYDLAUFF

113 N. MAIN STREET

PHONE GR 9-6651

GET SET FOR WINTER AT GAMBLER'S

LOW PRICES!

Get the best at savings!

Compare! We Will Not be Undersold!

VARCON Permanent ANTI-FREEZE

LOWEST PRICES IN TOWN!

One filling will last all winter. Positive protection to 34° below zero with 50-50 mixture. Protects car's cooling system against rust and corrosion. Available in cans or in your container.

BULK PERMANENT \$1.29 gal.

Bring Your Own Container.

Winter Temperature THERMOSTAT

\$1.49

Choose standard, hi or extra-low temperature model. For most cars. 10-20-30-40-50-60-70-80-90-100-110-120-130-140-150-160-170-180-190-200-210-220-230-240-250-260-270-280-290-300-310-320-330-340-350-360-370-380-390-400-410-420-430-440-450-460-470-480-490-500-510-520-530-540-550-560-570-580-590-600-610-620-630-640-650-660-670-680-690-700-710-720-730-740-750-760-770-780-790-800-810-820-830-840-850-860-870-880-890-900-910-920-930-940-950-960-970-980-990-1000-1010-1020-1030-1040-1050-1060-1070-1080-1090-1100-1110-1120-1130-1140-1150-1160-1170-1180-1190-1200-1210-1220-1230-1240-1250-1260-1270-1280-1290-1300-1310-1320-1330-1340-1350-1360-1370-1380-1390-1400-1410-1420-1430-1440-1450-1460-1470-1480-1490-1500-1510-1520-1530-1540-1550-1560-1570-1580-1590-1600-1610-1620-1630-1640-1650-1660-1670-1680-1690-1700-1710-1720-1730-1740-1750-1760-1770-1780-1790-1800-1810-1820-1830-1840-1850-1860-1870-1880-1890-1900-1910-1920-1930-1940-1950-1960-1970-1980-1990-2000-2010-2020-2030-2040-2050-2060-2070-2080-2090-2100-2110-2120-2130-2140-2150-2160-2170-2180-2190-2200-2210-2220-2230-2240-2250-2260-2270-2280-2290-2300-2310-2320-2330-2340-2350-2360-2370-2380-2390-2400-2410-2420-2430-2440-2450-2460-2470-2480-2490-2500-2510-2520-2530-2540-2550-2560-2570-2580-2590-2600-2610-2620-2630-2640-2650-2660-2670-2680-2690-2700-2710-2720-2730-2740-2750-2760-2770-2780-2790-2800-2810-2820-2830-2840-2850-2860-2870-2880-2890-2900-2910-2920-2930-2940-2950-2960-2970-2980-2990-3000-3010-3020-3030-3040-3050-3060-3070-3080-3090-3100-3110-3120-3130-3140-3150-3160-3170-3180-3190-3200-3210-3220-3230-3240-3250-3260-3270-3280-3290-3300-3310-3320-3330-3340-3350-3360-3370-3380-3390-3400-3410-3420-3430-3440-3450-3460-3470-3480-3490-3500-3510-3520-3530-3540-3550-3560-3570-3580-3590-3600-3610-3620-3630-3640-3650-3660-3670-3680-3690-3700-3710-3720-3730-3740-3750-3760-3770-3780-3790-3800-3810-3820-3830-3840-3850-3860-3870-3880-3890-3900-3910-3920-3930-3940-3950-3960-3970-3980-3990-4000-4010-4020-4030-4040-4050-4060-4070-4080-4090-4100-4110-4120-4130-4140-4150-4160-4170-4180-4190-4200-4210-4220-4230-4240-4250-4260-4270-4280-4290-4300-4310-4320-4330-4340-4350-4360-4370-4380-4390-4400-4410-4420-4430-4440-4450-4460-4470-4480-4490-4500-4510-4520-4530-4540-4550-4560-4570-4580-4590-4600-4610-4620-4630-4640-4650-4660-4670-4680-4690-4700-4710-4720-4730-4740-4750-4760-4770-4780-4790-4800-4810-4820-4830-4840-4850-4860-4870-4880-4890-4900-4910-4920-4930-4940-4950-4960-4970-4980-4990-5000-5010-5020-5030-5040-5050-5060-5070-5080-5090-5100-5110-5120-5130-5140-5150-5160-5170-5180-5190-5200-5210-5220-5230-5240-5250-5260-5270-5280-5290-5300-5310-5320-5330-5340-5350-5360-5370-5380-5390-5400-5410-5420-5430-5440-5450-5460-5470-5480-5490-5500-5510-5520-5530-5540-5550-5560-5570-5580-5590-5600-5610-5620-5630-5640-5650-5660-5670-5680-5690-5700-5710-5720-5730-5740-5750-5760-5770-5780-5790-5800-5810-5820-5830-5840-5850-5860-5870-5880-5890-5900-5910-5920-5930-5940-5950-5960-5970-5980-5990-6000-6010-6020-6030-6040-6050-6060-6070-6080-6090-6100-6110-6120-6130-6140-6150-6160-6170-6180-6190-6200-6210-6220-6230-6240-6250-6260-6270-6280-6290-6300-6310-6320-6330-6340-6350-6360-6370-6380-6390-6400-6410-6420-6430-6440-6450-6460-6470-6480-6490-6500-6510-6520-6530-6540-6550-6560-6570-6580-6590-6600-6610-6620-6630-6640-6650-6660-6670-6680-6690-6700-6710-6720-6730-6740-6750-6760-6770-6780-6790-6800-6810-6820-6830-6840-6850-6860-6870-6880-6890-6900-6910-6920-6930-6940-6950-6960-6970-6980-6990-7000-7010-7020-7030-7040-7050-7060-7070-7080-7090-7100-7110-7120-7130-7140-7150-7160-7170-7180-7190-7200-7210-7220-7230-7240-7250-7260-7270-7280-7290-7300-7310-7320-7330-7340-7350-7360-7370-7380-7390-7400-7410-7420-7430-7440-7450-7460-7470-7480-7490-7500-7510-7520-7530-7540-7550-7560-7570-7580-7590-7600-7610-7620-7630-7640-7650-7660-7670-7680-7690-7700-7710-7720-7730-7740-7750-7760-7770-7780-7790-7800-7810-7820-7830-7840-7850-7860-7870-7880-7890-7900-7910-7920-7930-7940-7950-7960-7970-7980-7990-8000-8010-8020-8030-8040-8050-8060-8070-8080-8090-8100-8110-8120-8130-8140-8150-8160-8170-8180-8190-8200-8210-8220-8230-8240-8250-8260-8270-8280-8290-8300-8310-8320-8330-8340-8350-8360-8370-8380-8390-8400-8410-8420-8430-8440-8450-8460-8470-8480-8490-8500-8510-8520-8530-8540-8550-8560-8570-8580-8590-8600-8610-8620-8630-8640-8650-8660-8670-8680-8690-8700-8710-8720-8730-8740-8750-8760-8770-8780-8790-8800-8810-8820-8830-8840-8850-8860-8870-8880-8890-8900-8910-8920-8930-8940-8950-8960-8970-8980-8990-9000-9010-9020-9030-9040-9050-9060-9070-9080-9090-9100-9110-9120-9130-9140-9150-9160-9170-9180-9190-9200-9210-9220-9230-9240-9250-9260-9270-9280-9290-9300-9310-9320-9330-9340-9350-9360-9370-9380-9390-9400-9410-9420-9430-9440-9450-9460-9470-9480-9490-9500-9510-9520-9530-9540-9550-9560-9570-9580-9590-9600-9610-9620-9630-9640-9650-9660-9670-9680-9690-9700-9710-9720-9730-9740-9750-9760-9770-9780-9790-9800-9810-9820-9830-9840-9850-9860-9870-9880-9890-9900-9910-9920-9930-9940-9950-9960-9970-9980-9990-10000-10010-10020-10030-10040-10050-10060-10070-10080-10090-10100-10110-10120-10130-10140-10150-10160-10170-10180-10190-10200-10210-10220-10230-10240-10250-10260-10270-10280-10290-10300-10310-10320-10330-10340-10350-10360-10370-10380-10390-10400-10410-10420-10430-10440-10450-10460-10470-10480-10490-10500-10510-10520-10530-10540-10550-10560-10570-10580-10590-10600-10610-10620-10630-10640-10650-10660-10670-10680-10690-10700-10710-10720-10730-10740-10750-10760-10770-10780-10790-10800-10810-10820-10830-10840-10850-10860-10870-10880-10890-10900-10910-10920-10930-10940-10950-10960-10970-10980-10990-11000-11010-11020-11030-11040-11050-11060-11070-11080-11090-11100-11110-11120-11130-11140-11150-11160-11170-11180-11190-11200-11210-11220-11230-11240-11250-11260-11270-11280-11290-11300-11310-11320-11330-11340-11350-11360-11370-11380-11390-11400-11410-11420-11430-11440-11450-11460-11470-11480-11490-11500-11510-11520-11530-11540-11550-11560-11570-11580-11590-11600-11610-11620-11630-11640-11650-11660-11670-11680-11690-11700-11710-11720-11730-11740-11750-11760-11770-11780-11790-11800-11810-11820

AGRICULTURE In Action

by M. L. Webb

Always Positive

Dr. Norman Vincent Peale, the sometimes controversial but always positive pastor of New York's famed Marble Collegiate Church, will visit Michigan soon. He is coming to the Lansing Civic Center as featured guest at the annual banquet program of the Michigan Farm Bureau, Nov. 15.

His appearance will be during the second evening of the three-day meeting, Nov. 18-20, on a program including Michigan's optimistic plumber, Robert "Fat" Taylor, the presentation of Distinguished Service to Agriculture awards and somewhat incongruously, the selection of a pretty farm "Queen."

Peale's way with words dates back to a career in newspaper reporting in Detroit, prior to a theological degree from Boston University and his ministerial career. Now, long lines of people wait in queues for entrance to the historic Marble Collegiate church (Peter Minuit, the Dutch Colonial Administrator in America, was a founder) where every Sunday Peale speaks to overflow crowds in contemporaneous sermons that are re-broadcast in the evening. At the Michigan Farm Bureau annual meeting dinner, 1,500 farmers and their guests will hear his opinions concerning why "Positive thinkers get positive results..." They will hear it from an expert, for when it comes to positive thinking, Peale should know. His book, "The Power of Positive Thinking," has sold more copies than any other similar non-fiction work, and at 2,500,000 copies still going strong. He has five other books currently on the market and is featured in a full-length motion picture film, based on his life.

Peale's strong feelings about individual worth and responsibility and the need for self-discipline have placed him in direct opposition to such people as Dr. Benjamin Spock, the prominent baby-doctor recently sentenced for encouraging students in anti-draft demonstrations.

Peale is death on permissiveness and feels that it has resulted in a less younger generation—the best undisciplined in history.

Why Peale at a Michigan farm meeting? Perhaps because farmers more than most people face life's tough decisions daily and need to realize how they too can put courage in discouragement or how to "keep on keeping on" in the titles of recent Peale sermons.

Sgt. Norman Hayes Now in Vietnam

Sgt. Norman Hayes of the U.S. Marine Corps has been transferred to DaNang, Vietnam from Treva Island, Fla. Sgt. Hayes, 20, the son of Mrs. Norman Hayes, who recently moved to Gladstone, 134 Orchard in Chelsea. Hayes has earned his high school diploma while in the service and is now taking a University Maryland course in accounting.

If you think you have a very intimate friend, don't get into a business deal with him.



STETSON
Casuals

We feature a wide selection of Stetson Casuals in bold patterns and solid colors... all styled to coordinate with your fall wardrobe

\$5.95
up

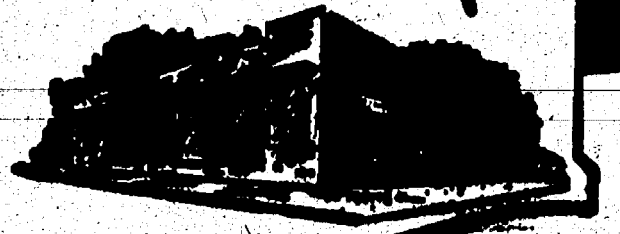
Strieter's
Men's Wear

"The Place To Go for
Brands You Know"

THE SUPERMARKET THAT'S JUST A LITTLE BIT BETTER

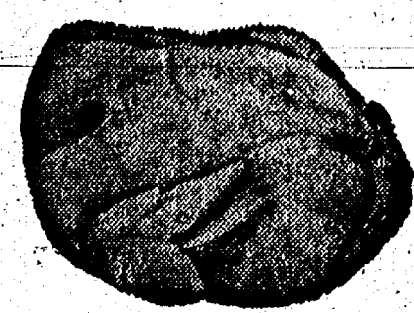
Stop & Shop

14901 Old U.S.-12
Corner at M-52
Chelsea



Lean, Tender, BONELESS ROLLED

PORK LOIN ROAST



"Triple R Farms"
U. S. Government
Inspected
Grade A

FRESH DRESSED

FRYERS

33¢
lb.

"Triple R Farms" SEMI-BONELESS

HAMS

★ De-Fatted
★ Ready-To-Eat

Whole or
Half

69¢
lb.

Lean, Tender

Pork Chops

Center Cut
Rib

89¢
lb.

Lean, Tender

Pork Chops

Center Cut
Loin

99¢
lb.

Country Style

Spare Ribs

65¢
lb.

"Triple R Farms" Michigan Grade 1

Skinless Wieners

49¢
lb.

Stop & Shop's Fresh, Lean, All-American Beef

Hamburger

3-Lb. Units
or More

55¢
lb.

Lean, Tender, BONELESS and CUBED

Pork Cutlets

79¢
lb.

Tender, Sliced

Beef Liver

39¢
lb.

Morrell's Pride

Sliced Bacon

1-Lb. Vac.
Pack 69¢
lb.

Sunshine

KRISPY

CRACKERS

1-Lb.
Box

27¢

Crispy Flake

POTATO

CHIPS

14-Oz.
Bag

49¢

Heinz Rich Tomato

Ketchup

14-Oz.
Bottle

19¢

Jiffy Butter Flavor

Popcorn

5-Oz.
Pkg.

29¢

Silver Floss

Sauerkraut

1-Lb., 3-Oz.
Can

19¢

FARM FRESH PRODUCE

Golden Ripe

Bananas 2 Lbs. 29¢

U. S. No. 1 Michigan

Potatoes 10-Lb. Bag 39¢

Nabisco Oreo Crema

Sandwich Cookies

1-Lb.
Pkg.

47¢

Shur-Good

Sweet Rolls

12-Oz.
Pkg.

39¢

Keebler

Honey Grahams

1-Lb.
Box

29¢

Melrose Lightly Salted

Fresh BUTTER

1-Lb.
Print

66¢

Star-Kist Chunk Style

Tuna

6 1/2-Oz.
Can

27¢

Del Monte

Beets

Whole or
Sliced

1-Lb.
Glass

19¢

Domino 10X

Powdered Sugar

1-Lb.
Box

15¢

Treesweet Fresh Frozen Florida

Orange Juice

6-Oz.
Can

16¢

McDonald Rich, Delicious

Chocolate Milk

1-Pt.
Can

9¢

McDonald

Fudgesicles

Pkg.
of 6

24¢

Pioneer Pure Granulated

Sugar

5-Lb.
Bag

49¢

Kraft's Salad Dressing

Miracle Whip

Qt.
Jar

48¢

WE
RESERVE
THE
RIGHT
TO
LIMIT
QUANTITIES

OPEN
SUNDAY
10 a.m. - 6 p.m.
All Sale Prices
Effective
Sundays

Sorry,
No Sales
To Dealers

STORE HOURS:
Mon., Tues, Wed.,
9 a.m.-6 p.m.
Thursday, 9 a.m.-9 p.m.
Friday, 9 a.m.-9 p.m.
Saturday, 8 a.m.-9 p.m.
Sunday
10 a.m. to 6 p.m.

About Your Social Security

In this, the last three months of the year, a special "carry-over" rule may allow some medical expenses of Medicare enrollees to be counted twice toward the \$50 deductible provision. For this reason, it is important that bills for covered services received in October, November, and December not be discarded even though total medical bills for the year are not over \$50. Robert A. Kohoe, manager of the Social Security district office said.

There are two situations in which this special "carry-over" rule applies, Kohoe noted. In each case an understanding of the deductible provisions of the medical insurance, Part B of Medicare, can save money for the beneficiary who has incurred expenses for doctors or other medical services covered by the insurance.

The first of these is when the covered expenses for the calendar year are \$50 or less. Then any expense for services rendered in October, November or December can count toward the \$50 deductible next year. For example, total medical expenses in 1968 amount to \$30. Of this, \$30 was for services received in the last three months of the year. Although Medicare can make no payment for 1968 because the \$50 deductible has not been exceeded, the \$30 can be counted toward the 1969 deductible. This means that the first \$20 of covered expense next year will fulfill the deductible and Medicare can pay 80 percent of all covered expenses over this \$20.

The second instance in which the "carry-over" rule can be applied occurs when covered expenses do not exceed \$50 until the last three months and then additional bills in this period bring the total over the deductible amount. For example, expenses were \$20 for January through September, but in the October through December period an additional \$100 expense incurred. Of this amount \$30 would be added to the first \$20 to make up the \$50 deductible for this year. Medicare would pay 80 percent of the \$70 balance (\$56). The special "carry-over" rule provision allows the same \$30 that completed the 1968 deductible to be counted again toward the next year's deductible.

Kohoe pointed out that in this second example a claim would have been filed with the Medicare carrier and the \$30 would be automatically credited to the beneficiary's deductible account for both 1968 and 1969. In the first example, however, no claim would be filed since this year's covered expense did not exceed \$50. It is important, then, that the bills for October, November and December expenses be retained and filed with any 1969 bills for medical services.

All Social Security offices have available, free of charge, a Medicare kit containing instructions, a place to record expenses, and a convenient pocket to keep medical bills. You may secure your Medicare kit by writing to P. O. Box 627, Ann Arbor, 48107.

NAMED TO UN POST
President Johnson has nominated James Russell Wiggins to represent the United States in the United Nations. Wiggins, replacing George W. Ball, who resigned, was editor and executive vice president of the Washington Post.

RESERVISTS RELEASED
The Pentagon has decided to return to civilian life some 16,000 air National Guardsmen and reservists called up after North Korea captured the U.S. spy ship Pueblo. Many of these reservists will be released during the last three months of 1968.

Views of Candidates, Issues Will Be NT Program Feature

East Lansing—"NET Journal" examines the three major candidates and their views on "The Candidates and the Issues," Friday, Nov. 1, at 7 p.m. on WMSB (Channel 10), Michigan State University television.

The American political scene is perennially confused, but in election years it often becomes chaotic. In an effort to clarify the vital issues facing the American electorate, this program presents interviews with the candidates and analyses of grass-roots reaction by NET regional editors.

Other WMSB highlights include: **ELLINGTON**—World-famous composer, pianist and orchestra leader Duke Ellington appears with his company in "Ellington: A Concert of Sacred Music," Sunday, Oct. 27, at 1:30 p.m.

The complete concert, recorded in San Francisco's Grace Cathedral, is aired in this hour-long production. Highlights of the program include performances by guest artists Jon Hendricks and Esther Marrow and a piano solo by Ellington, "New World A'Comin'."

DRAMA—"Women Beware Women," a tragedy of love and revenge, written by the 17th century dramatist Thomas Middleton, is featured on "NET Playhouse," Sunday, Oct. 27, at 11 p.m.

Though the setting is Italian, the play is actually a sharp, but

witty, study of 17th century England's social condition. The effects of jealousy, murder, corruption, intrigue and seduction form an exciting and compelling plot.

EINSTEIN—The life of the most famous scientist of this century will be examined on "Einstein," Sunday, Oct. 27, at 2:30 p.m.

Months of effort went into the making of this thorough documentary. The complete portrait of Albert Einstein as both man and scientist is created by many people who knew him well, including his secretary, his friends and his scientific associates.

FOLK SONGS—Popular entertainer Thom O'Hara presents a lively selection of folk music on "Song of the Americas," Sunday, Oct. 27, at 5 p.m.

The songs featured on the special program come from such countries as Canada, the United States, Columbia and Mexico. O'Hara had traveled widely in the Americas to collect his repertoire.

JULIAN BOND—The emergence of Georgia legislator Julian Bond is explored on "Black Journal," Sunday, Oct. 27, at 12:30 p.m. and Wednesday, Oct. 30, at 12 noon.

Utilizing the cinema verite technique, "Black Journal" examines the life of Julian Bond, 28-year-

Fall Color Peak Reaches Central Michigan Regions

Peak fall color conditions are expected in the central and southern portions of the lower peninsula the week-end of Oct. 28 with some color remaining in scattered areas slightly north, according to the Michigan Tourist Council.

Central and southern county observers predict the best color viewing in their areas should begin toward the latter part of the week with maximum conditions prevailing through Saturday and Sunday.

Brisk winds have taken an early toll of color in the upper one-third of the lower peninsula. Cadillac and Petoskey areas, however, expect color to hold from 25 to 40 percent of post-maximum viewing through the coming week-end.

Don't worry about the smart-alecks who deride the churches. That's where you belong if you want to do anything to improve yourself and your race.

old member of the Georgia legislature. Bond was thrust into national prominence as a protest candidate for the vice-presidency at the recent Democratic National Convention.

Other segments of the program explore the dilemma of the black policeman, the link between African and Afro-American art and the Mozambique liberation struggle.

ELECT CONLIN DISTRICT JUDGE



Vote Nov. 5 for

PATRICK J.

CONLIN

for

DISTRICT JUDGE

Your Vote Counts for

Integrity and Leadership

Chelsea for Conlin Committee

GENERAL ELECTION

To the Qualified Electors:

NOTICE IS HEREBY GIVEN,

That a General Election will be held in the

TOWNSHIP OF DEXTER

(Precinct No. 1)

County of Washtenaw, State of Michigan

DEXTER TOWNSHIP HALL

Quigley Road at Dexter Township Road

within said Township on

TUESDAY, NOVEMBER 5, 1968

For the Purpose of Electing the Following Officers, viz:

NATIONAL President and Vice-President of the United States

CONGRESSIONAL Representative in Congress

LEGISLATIVE State Representative

STATE Two Members of the State Board of Education, Two Regents of the University of Michigan, Two Trustees of Michigan State University, Two Governors of Wayne State University.

COUNTY Prosecuting Attorney, Sheriff, County Clerk, County Treasurer, Register of Deeds, Auditor in Counties electing same, Drain Commissioner, Coroners, Surveyor, One County Supervisor from each District, and such other Officers as are elected at that time.

TOWNSHIP One Trustee

AND FOR THE PURPOSE OF ELECTING THE FOLLOWING

NON-PARTISAN OFFICERS, VIZ:

Justice of the Supreme Court

Judge of the Court of Appeals

Judge of the District Court

AND ALSO TO VOTE ON THE FOLLOWING

CONSTITUTIONAL AMENDMENTS:

1. Proposed Amendment to remove the present restriction against the adoption of a Graduated Income Tax.
2. Referendum on Act 6 of the Public Acts of 1967 (Daylight Savings Time)
3. Referendum on Act 76 of the Public Acts of 1968 (Proposal relating to Bonding to Abate Water Pollution)
4. Referendum on Act 257 of the Public Acts of 1968 (Proposal relating to Bonding for Public Recreational Purposes)
5. Proposed Amendment to permit the Election of Members of the Legislature during their term of office to another State Office.

AND ALSO TO VOTE ON THE FOLLOWING COUNTY PROPOSITION: "Shall the tax limitation on the total amount of general ad valorem taxes which may be imposed each year for all purposes upon real and tangible personal property in Washtenaw County, Michigan, be increased as provided in Section 6, Article IX of the Constitution of Michigan for a period of three years from (1969-1971) both inclusive by one (1) mill, (one dollar per thousand of State equalized valuation) with the revenue to be allocated to and expended by the Board of County Road Commissioners of the County of Washtenaw exclusively for Highway, road and street purposes to expedite the construction of roads and streets in Washtenaw County?"

COUNTY TREASURER'S STATEMENT

(As required by Act 293, Public Acts of Michigan, 1947).
I, Sylvester A. Leonard, County Treasurer of the County of Washtenaw, State of Michigan, do hereby certify that, according to the records of this Office, as of September 6, 1968, the total of all voted increases in the tax rate limitation, above the 18 mills established taxable property in Washtenaw County, State of Michigan, in said County, is as follows:

Local Unit	Years	Vote	Effective
County of Washtenaw	18 Mills	1953-1972 Incl.	
Ann Arbor Township	None	1953-1972 Incl.	
Augusta Township	None	1953-1972 Incl.	
Bridgewater Township	None	1953-1972 Incl.	
Dexter Township	None	1953-1972 Incl.	
Freedom Township	None	1953-1972 Incl.	
Leoni Township	None	1953-1972 Incl.	
Lyndon Township	None	1953-1972 Incl.	
Manchester Township	None	1953-1972 Incl.	
Northfield Township	None	1953-1972 Incl.	
Saline Township	None	1953-1972 Incl.	
Saline Township	None	1953-1972 Incl.	
Scioto Township	None	1953-1972 Incl.	
Sharon Township	None	1953-1972 Incl.	
Superior Township	None	1953-1972 Incl.	
Sylvan Township	None	1953-1972 Incl.	
Webster Township	None	1953-1972 Incl.	
York Township	None	1953-1972 Incl.	
Ypsilanti Township	None	1953-1972 Incl.	
Washtenaw Community College	18 Mills	1953-1972 Incl.	
Oakland Community College	18 Mills	1953-1972 Incl.	
Scholarship Community College	18 Mills	1953-1972 Incl.	
Washtenaw County Intermediate School District	18 Mills	1953-1972 Incl.	
Indian Community Intermediate School District	18 Mills	1953-1972 Incl.	
Jackson County Intermediate School District	18 Mills	1953-1972 Incl.	
Lansing Community Intermediate School District	18 Mills	1953-1972 Incl.	
Livonia Community Intermediate School District	18 Mills	1953-1972 Incl.	
Oakland County Intermediate School District	18 Mills	1953-1972 Incl.	
Ann Arbor Public Schools District	18 Mills	1953-1972 Incl.	
Ypsilanti Public Schools District	18 Mills	1953-1972 Incl.	
Chelsea Schools District	18 Mills	1953-1972 Incl.	
Lincoln Consolidated School District	18 Mills	1953-1972 Incl.	
Manchester Public Schools District	18 Mills	1953-1972 Incl.	
Milan Area Schools District	18 Mills	1953-1972 Incl.	
Saline Area Schools District	18 Mills	1953-1972 Incl.	
Whitmore Lake Schools District	18 Mills	1953-1972 Incl.	
Willow Run Public Schools District	18 Mills	1953-1972 Incl.	
Clinton Community Schools	18 Mills	1953-1972 Incl.	
Columbia School District	18 Mills	1953-1972 Incl.	
Napoleon Rural Agriculture School District	18 Mills	1953-1972 Incl.	
Northville Public School District	18 Mills	1953-1972 Incl.	
Pinekey Community Schools District	18 Mills	1953-1972 Incl.	
Plymouth Community Schools	18 Mills	1953-1972 Incl.	
South Lyon Community School District	18 Mills	1953-1972 Incl.	
Stockbridge Community Schools	18 Mills	1953-1972 Incl.	
Van Buren Township School District	18 Mills	1953-1972 Incl.	

Dated: September 6, 1968

Notice Relative to Opening and Closing of the Polls

ELECTION LAW, ACT 116, P. A. 1954 SECTION 720. On the day of any election the polls shall be opened at 7 o'clock in the forenoon, and shall be continuously open until 8 o'clock in the afternoon and no longer. Every qualified elector present and in line at the polls at the hour prescribed for the closing thereof shall be allowed to vote.

THE POLLS of said election will be open at 7 o'clock a.m. and will remain open until 8 o'clock p.m. of said day of election.

WILLIAM EISENBEISER, Township Clerk

AUCTION SATURDAY, OCT. 26

1:00 p.m. Sharp

Located at 1708 Ridge Rd., Cavanaugh Lake, Chelsea

DIRECTIONS: Go to center of Chelsea, turn west on W. Middle St., continue on Cavanaugh Lake Rd. to Ridge Rd., approx. 5 mi., turn right on Ridge, second house.

Have decided to sell our personal effects from our home in Chelsea and our lake cottage. These items are just like new. No pets or children.

Amara Deep Freezer.
Westinghouse refrigerator.
G.E. electric range.
L.P. gas range.
Kibby sweeper with attachments.
G.E. color TV. G.E. radio.
2. White and Dressmaker sewing machines.
7-m. size oil furnace.
Rototiller. 1500-gal. oil tank.
2 mowers. 1 reel, 1 rotary.
1 set (Redwood-Patio) 2 large benches, 2 sm. benches, table and 2 chairs.
Several lawn chairs.
Bar-B-Q grill - rotisserie.
Metal ceiling blocks, doors, windows, misc. tools.
Lg. quan. of interior panelling.
2 card tables, 4 chairs.
1 living room suite, brown.
1 sofa, 7 occas. chairs.

Hookcase with glass doors.
Coffee table, end tables.
8 asst. lamps, 2 sets luggage.
5-pc. Duncan Phyfe dining set.
2 5-pc. dinettes, kitchen.
1 set metal kitchen cabinets.
Built-in sink.
2 white metal kitchen cabinets, pull around.
Twin-bed, box spring & mattress, chest.
4 bed, headboard & frame.
3 cedar chests, 3 clocks.
1 set Trundle beds with box springs & mattress.
Medicine cabinet.
2 bathroom scales.
Many misc. items incl. dishes, kitchenware, cast iron skillets and electrical appliances.
The usual extra room accessories.

TERMS: CASH

Not Responsible for Accidents on Premises Day of Sale.

Woodrow Gullett, Owner
HARRY J. BRENNAN, Auctioneer

Talk with the Smart Set.



What's the Smart Set?
Why, a pair of extension phones—the sleek new Trimline® Phone that fits in the palm of your hand and the elegant Princess® Phone with a dial that lights up.

Smart looks, smart step-savers, smart people getting with it. They're turning up everywhere in the most comfortable homes and apartments around.

So talk with the Smart Set. It's the only thing smarter than one extension.

Michigan Bell

Part of the Nationwide Bell System

GENERAL ELECTION

To the Qualified Electors:

NOTICE IS HEREBY GIVEN:

That a General Election will be held in the TOWNSHIP OF LYNDON

(Precinct No. 1)

County of Washtenaw, State of Michigan

LYNDON TOWNSHIP HALL

Corner North Territorial Road and Old M-92
within said Township on

TUESDAY, NOVEMBER 5, 1968

For the Purpose of Electing the Following Officers, viz:

NATIONAL President and Vice-President of the United States

CONGRESSIONAL Representative in Congress

LEGISLATIVE State Representative

STATE Two Members of the State Board of Education, Two Regents of the University of Michigan, Two Trustees of Michigan State University, Two Governors of Wayne State University.

COUNTY Prosecuting Attorney, Sheriff, County Clerk, County Treasurer, Register of Deeds, Auditor in Counties electing same, Drain Commissioner, Coroner, Surveyor, One County Supervisor from each District, and such other Officers as are elected at that time.

TOWNSHIP One Trustee

AND FOR THE PURPOSE OF ELECTING THE FOLLOWING NON-PARTISAN OFFICERS, VIZ:

Justice of the Supreme Court

Judge of the Court of Appeals

Judge of the District Court

AND ALSO TO VOTE ON THE FOLLOWING CONSTITUTIONAL AMENDMENTS:

1. Proposed Amendment to remove the present restriction against the adoption of a Graduated Income Tax.
2. Referendum on Act 6 of the Public Acts of 1967 (Daylight Savings Time)
3. Referendum on Act 76 of the Public Acts of 1968 (Proposal relating to Bonding to Abate Water Pollution)
4. Referendum on Act 257 of the Public Acts of 1968 (Proposal relating to Bonding for Public Recreational Purposes)
5. Proposed Amendment to permit the Election of Members of the Legislature during their term of office to another State Office.

AND ALSO TO VOTE ON THE FOLLOWING COUNTY PROPOSITION:

"Shall the tax limitation on the total amount of general ad valorem taxes which may be imposed each year for all purposes upon real and tangible personal property in Washtenaw County, Michigan, be increased as provided in Section 6, Article IX of the Constitution of Michigan for a period of three years from (1969-1971) both inclusive by one (1) mill, (one dollar per thousand of State equalized valuation) with the revenue to be allocated to and expended by the Board of County Road Commissioners of the County of Washtenaw exclusively for Highway, road and street purposes to expedite the construction of roads and streets in Washtenaw County?"

COUNTY TREASURER'S STATEMENT

(As required by Act 293, Public Acts of Michigan, 1947)

I, Sylvester A. Leonard, County Treasurer of the County of Washtenaw, State of Michigan, do hereby certify that, according to the records of this Office, as of September 6, 1968, the total of all voted increases in the tax rate limitation, above the 18 mills established taxable property in Washtenaw County, State of Michigan, in said County, is as follows:

Local Unit		Years	
County of Washtenaw		Voted Increase	Increase Effective
Ann Arbor Township	15	1967-1968 Inc.	1967-1968 Inc.
Ann Arbor Township	15	1968-1969 Inc.	1968-1969 Inc.
Ann Arbor Township	15	1969-1970 Inc.	1969-1970 Inc.
Ann Arbor Township	15	1970-1971 Inc.	1970-1971 Inc.
Ann Arbor Township	15	1971-1972 Inc.	1971-1972 Inc.
Ann Arbor Township	15	1972-1973 Inc.	1972-1973 Inc.
Ann Arbor Township	15	1973-1974 Inc.	1973-1974 Inc.
Ann Arbor Township	15	1974-1975 Inc.	1974-1975 Inc.
Ann Arbor Township	15	1975-1976 Inc.	1975-1976 Inc.
Ann Arbor Township	15	1976-1977 Inc.	1976-1977 Inc.
Ann Arbor Township	15	1977-1978 Inc.	1977-1978 Inc.
Ann Arbor Township	15	1978-1979 Inc.	1978-1979 Inc.
Ann Arbor Township	15	1979-1980 Inc.	1979-1980 Inc.
Ann Arbor Township	15	1980-1981 Inc.	1980-1981 Inc.
Ann Arbor Township	15	1981-1982 Inc.	1981-1982 Inc.
Ann Arbor Township	15	1982-1983 Inc.	1982-1983 Inc.
Ann Arbor Township	15	1983-1984 Inc.	1983-1984 Inc.
Ann Arbor Township	15	1984-1985 Inc.	1984-1985 Inc.
Ann Arbor Township	15	1985-1986 Inc.	1985-1986 Inc.
Ann Arbor Township	15	1986-1987 Inc.	1986-1987 Inc.
Ann Arbor Township	15	1987-1988 Inc.	1987-1988 Inc.
Ann Arbor Township	15	1988-1989 Inc.	1988-1989 Inc.
Ann Arbor Township	15	1989-1990 Inc.	1989-1990 Inc.
Ann Arbor Township	15	1990-1991 Inc.	1990-1991 Inc.
Ann Arbor Township	15	1991-1992 Inc.	1991-1992 Inc.
Ann Arbor Township	15	1992-1993 Inc.	1992-1993 Inc.
Ann Arbor Township	15	1993-1994 Inc.	1993-1994 Inc.
Ann Arbor Township	15	1994-1995 Inc.	1994-1995 Inc.
Ann Arbor Township	15	1995-1996 Inc.	1995-1996 Inc.
Ann Arbor Township	15	1996-1997 Inc.	1996-1997 Inc.
Ann Arbor Township	15	1997-1998 Inc.	1997-1998 Inc.
Ann Arbor Township	15	1998-1999 Inc.	1998-1999 Inc.
Ann Arbor Township	15	1999-2000 Inc.	1999-2000 Inc.
Ann Arbor Township	15	2000-2001 Inc.	2000-2001 Inc.
Ann Arbor Township	15	2001-2002 Inc.	2001-2002 Inc.
Ann Arbor Township	15	2002-2003 Inc.	2002-2003 Inc.
Ann Arbor Township	15	2003-2004 Inc.	2003-2004 Inc.
Ann Arbor Township	15	2004-2005 Inc.	2004-2005 Inc.
Ann Arbor Township	15	2005-2006 Inc.	2005-2006 Inc.
Ann Arbor Township	15	2006-2007 Inc.	2006-2007 Inc.
Ann Arbor Township	15	2007-2008 Inc.	2007-2008 Inc.
Ann Arbor Township	15	2008-2009 Inc.	2008-2009 Inc.
Ann Arbor Township	15	2009-2010 Inc.	2009-2010 Inc.
Ann Arbor Township	15	2010-2011 Inc.	2010-2011 Inc.
Ann Arbor Township	15	2011-2012 Inc.	2011-2012 Inc.
Ann Arbor Township	15	2012-2013 Inc.	2012-2013 Inc.
Ann Arbor Township	15	2013-2014 Inc.	2013-2014 Inc.
Ann Arbor Township	15	2014-2015 Inc.	2014-2015 Inc.
Ann Arbor Township	15	2015-2016 Inc.	2015-2016 Inc.
Ann Arbor Township	15	2016-2017 Inc.	2016-2017 Inc.
Ann Arbor Township	15	2017-2018 Inc.	2017-2018 Inc.
Ann Arbor Township	15	2018-2019 Inc.	2018-2019 Inc.
Ann Arbor Township	15	2019-2020 Inc.	2019-2020 Inc.
Ann Arbor Township	15	2020-2021 Inc.	2020-2021 Inc.
Ann Arbor Township	15	2021-2022 Inc.	2021-2022 Inc.
Ann Arbor Township	15	2022-2023 Inc.	2022-2023 Inc.
Ann Arbor Township	15	2023-2024 Inc.	2023-2024 Inc.
Ann Arbor Township	15	2024-2025 Inc.	2024-2025 Inc.
Ann Arbor Township	15	2025-2026 Inc.	2025-2026 Inc.
Ann Arbor Township	15	2026-2027 Inc.	2026-2027 Inc.
Ann Arbor Township	15	2027-2028 Inc.	2027-2028 Inc.
Ann Arbor Township	15	2028-2029 Inc.	2028-2029 Inc.
Ann Arbor Township	15	2029-2030 Inc.	2029-2030 Inc.
Ann Arbor Township	15	2030-2031 Inc.	2030-2031 Inc.
Ann Arbor Township	15	2031-2032 Inc.	2031-2032 Inc.
Ann Arbor Township	15	2032-2033 Inc.	2032-2033 Inc.
Ann Arbor Township	15	2033-2034 Inc.	2033-2034 Inc.
Ann Arbor Township	15	2034-2035 Inc.	2034-2035 Inc.
Ann Arbor Township	15	2035-2036 Inc.	2035-2036 Inc.
Ann Arbor Township	15	2036-2037 Inc.	2036-2037 Inc.
Ann Arbor Township	15	2037-2038 Inc.	2037-2038 Inc.
Ann Arbor Township	15	2038-2039 Inc.	2038-2039 Inc.
Ann Arbor Township	15	2039-2040 Inc.	2039-2040 Inc.
Ann Arbor Township	15	2040-2041 Inc.	2040-2041 Inc.
Ann Arbor Township	15	2041-2042 Inc.	2041-2042 Inc.
Ann Arbor Township	15	2042-2043 Inc.	2042-2043 Inc.
Ann Arbor Township	15	2043-2044 Inc.	2043-2044 Inc.
Ann Arbor Township	15	2044-2045 Inc.	2044-2045 Inc.
Ann Arbor Township	15	2045-2046 Inc.	2045-2046 Inc.
Ann Arbor Township	15	2046-2047 Inc.	2046-2047 Inc.
Ann Arbor Township	15	2047-2048 Inc.	2047-2048 Inc.
Ann Arbor Township	15	2048-2049 Inc.	2048-2049 Inc.
Ann Arbor Township	15	2049-2050 Inc.	2049-2050 Inc.
Ann Arbor Township	15	2050-2051 Inc.	2050-2051 Inc.
Ann Arbor Township	15	2051-2052 Inc.	2051-2052 Inc.
Ann Arbor Township	15	2052-2053 Inc.	2052-2053 Inc.
Ann Arbor Township	15	2053-2054 Inc.	2053-2054 Inc.
Ann Arbor Township	15	2054-2055 Inc.	2054-2055 Inc.
Ann Arbor Township	15	2055-2056 Inc.	2055-2056 Inc.
Ann Arbor Township	15	2056-2057 Inc.	2056-2057 Inc.
Ann Arbor Township	15	2057-2058 Inc.	2057-2058 Inc.
Ann Arbor Township	15	2058-2059 Inc.	2058-2059 Inc.
Ann Arbor Township	15	2059-2060 Inc.	2059-2060 Inc.
Ann Arbor Township	15	2060-2061 Inc.	2060-2061 Inc.
Ann Arbor Township	15	2061-2062 Inc.	2061-2062 Inc.
Ann Arbor Township	15	2062-2063 Inc.	2062-2063 Inc.
Ann Arbor Township	15	2063-2064 Inc.	2063-2064 Inc.
Ann Arbor Township	15	2064-2065 Inc.	2064-2065 Inc.
Ann Arbor Township	15	2065-2066 Inc.	2065-2066 Inc.
Ann Arbor Township	15	2066-2067 Inc.	2066-2067 Inc.
Ann Arbor Township	15	2067-2068 Inc.	2067-2068 Inc.
Ann Arbor Township	15	2068-2069 Inc.	2068-2069 Inc.
Ann Arbor Township	15	2069-2070 Inc.	2069-2070 Inc.
Ann Arbor Township	15	2070-2071 Inc.	2070-2071 Inc.
Ann Arbor Township	15	2071-2072 Inc.	2071-2072 Inc.
Ann Arbor Township	15	2072-2073 Inc.	2072-2073 Inc.
Ann Arbor Township	15	2073-2074 Inc.	2073-2074 Inc.
Ann Arbor Township	15	2074-2075 Inc.	2074-2075 Inc.
Ann Arbor Township	15	2075-2076 Inc.	2075-2076 Inc.
Ann Arbor Township	15	2076-2077 Inc.	2076-2077 Inc.
Ann Arbor Township	15	2077-2078 Inc.	2077-2078 Inc.
Ann Arbor Township	15	2078-2079 Inc.	2078-2079 Inc.
Ann Arbor Township	15	2079-2080 Inc.	2079-2080 Inc.
Ann Arbor Township	15	2080-2081 Inc.	2080-2081 Inc.
Ann Arbor Township	15	2081-2082 Inc.	2081-2082 Inc.
Ann Arbor Township	15	2082-2083 Inc.	2082-2083 Inc.
Ann Arbor Township	15	2083-2084 Inc.	2083-2084 Inc.
Ann Arbor Township	15	2084-2085 Inc.	2084-2085 Inc.
Ann Arbor Township	15	2085-2086 Inc.	2085-2086 Inc.
Ann Arbor Township	15	2086-2087 Inc.	2086-2087 Inc.
Ann Arbor Township	15	2087-2088 Inc.	2087-2088 Inc.
Ann Arbor Township	15	2088-2089 Inc.	2088-2089 Inc.
Ann Arbor Township	15	2089-2090 Inc.	2089-2090 Inc.
Ann Arbor Township	15	2090-2091 Inc.	2090-2091 Inc.
Ann Arbor Township	15	2091-2092 Inc.	2091-2092 Inc.
Ann Arbor Township	15	2092-2093 Inc.	2092-2093 Inc.
Ann Arbor Township	15	2093-2094 Inc.	2093-2094 Inc.
Ann Arbor Township	15	2094-2095 Inc.	2094-2095 Inc.
Ann Arbor Township	15	2095-2096 Inc.	2095-2096 Inc.
Ann Arbor Township	15	2096-2097 Inc.	2096-2097 Inc.
Ann Arbor Township	15	2097-2098 Inc.	2097-2098 Inc.
Ann Arbor Township	15	2098-2099 Inc.	2098-2099 Inc.
Ann Arbor Township	15	2099-2100 Inc.	2099-2100 Inc.
Ann Arbor Township	15	2100-2101 Inc.	2100-2101 Inc.
Ann Arbor Township	15	2101-2102 Inc.	2101-2102 Inc.
Ann Arbor Township	15	2102-2103 Inc.	2102-2103 Inc.
Ann Arbor Township	15	2103-2104 Inc.	2103-2104 Inc.
Ann Arbor Township	15	2104-2105 Inc.	2104-2105 Inc.
Ann Arbor Township	15	2105-2106 Inc.	2105-2106 Inc.
Ann Arbor Township	15	2106-2107 Inc.	2106-2107 Inc.
Ann Arbor Township	15	2107-2108 Inc.	2107-2108 Inc.
Ann Arbor Township	15	2108-2109 Inc.	2108-2109 Inc.
Ann Arbor Township	15	2109-2110 Inc.	2109-2110 Inc.
Ann Arbor Township	15	2110-2111 Inc.	2110-2111 Inc.
Ann Arbor Township	15	2111-2112 Inc.	2111-2112 Inc.
Ann Arbor Township	15	2112-2113 Inc.	2112-2113 Inc.
Ann Arbor Township	15	2113-2114 Inc.	2113-2114 Inc.
Ann Arbor Township	15	2114-2115 Inc.	2114-2115 Inc.
Ann Arbor Township	15	2115-2116 Inc.	2115-2116 Inc.
Ann Arbor Township	15	2116-2117 Inc.	2116-2117 Inc.
Ann Arbor Township	15	2117-2118 Inc.	2117-2118 Inc.
Ann Arbor Township	15	2118-2119 Inc.	2118-2119 Inc.
Ann Arbor Township	15	2119-2120 Inc.	2119-2120 Inc.
Ann Arbor Township	15	2120-2121 Inc.	2120-2121 Inc.
Ann Arbor Township	15	2121-2122 Inc.	2121-2122 Inc.
Ann Arbor Township	15	2122-2123 Inc.	2122-2123 Inc.
Ann Arbor Township	15	2123-2124 Inc.	2123-2124 Inc.
Ann Arbor Township	15	2124-2125 Inc.	2124-2125 Inc.
Ann Arbor Township	15	2125-2126 Inc.	2125-2126 Inc.
Ann Arbor Township	15	2126-2127 Inc.	2126-2127 Inc.
Ann Arbor Township	15	2127-2128 Inc.	2127-2128 Inc.
Ann Arbor Township	15	2128-2129 Inc.	2128-2129 Inc.
Ann Arbor Township	15	2129-2130 Inc.	2129-2130 Inc.
Ann Arbor Township	15	2130-2131 Inc.	2130-2131 Inc.
Ann Arbor Township	15	2131-2132 Inc.	2131-2132 Inc.
Ann Arbor Township	15	2132-2133 Inc.	2132-2133 Inc.
Ann Arbor Township	15	2133-2134 Inc.	2133-2134 Inc.
Ann Arbor Township	15	2134-2135 Inc.	2134-2135 Inc.
Ann Arbor Township	15	2135-2136 Inc.	2135-2136 Inc.
Ann Arbor Township	15	2136-2137 Inc.	2136-2137 Inc.
Ann Arbor Township	15	2137-2138 Inc.	2137-2138 Inc.
Ann Arbor Township	15	2138-2139 Inc.	2138-2139 Inc.
Ann Arbor Township	15	2139-2140 Inc.	2139-2140 Inc.
Ann Arbor Township	15	2140-2141 Inc.	2140-2141 Inc.
Ann Arbor Township	15	2141-2142 Inc.	2141-2142 Inc.
Ann Arbor Township	15	2142-2143 Inc.	2142-2143 Inc.
Ann Arbor Township	15	2143-2144 Inc.	2143-2144 Inc.
Ann Arbor Township	15	2144-2145 Inc.	2144-2145 Inc.
Ann Arbor Township	15	2145-2146 Inc.	2145-2146 Inc.
Ann Arbor Township	15	2146-2147 Inc.	2146-2147 Inc.
Ann Arbor Township	15	2147-2148 Inc.	2147-2148 Inc.
Ann Arbor Township	15	2148-2149 Inc.	2148-2149 Inc.
Ann Arbor Township	15	2149-2150 Inc.	2149-2150 Inc.
Ann Arbor Township	15	2150-2151 Inc.	2150-2151 Inc.
Ann Arbor Township	15	2151-2152 Inc.	2151-2152 Inc.
Ann Arbor Township	15	2152-2153 Inc.	2152-2153 Inc.
Ann Arbor Township	15	2153-2154 Inc.	2153-2154 Inc.
Ann Arbor Township	15	2154-2155 Inc.	2154-2155 Inc.
Ann Arbor Township	15	2155-2156 Inc.	2155-2156 Inc.
Ann Arbor Township	15	2156-2157 Inc.	2156-2157 Inc.
Ann Arbor Township	15	2157-2158 Inc.	2157-2158 Inc.
Ann Arbor Township	15	2158-2159 Inc.	2158-2159 Inc.
Ann Arbor Township	15	2159-2160 Inc.	2159-2160 Inc.
Ann Arbor Township	15	2160-2161 Inc.	2160-2161 Inc.
Ann Arbor Township	15	2161-2162 Inc.	2161-2162 Inc.
Ann Arbor Township	15	2162-2163 Inc.	2162-2163 Inc.
Ann Arbor Township	15	2163-2164 Inc.	2163-2164 Inc.
Ann Arbor Township	15	2164-2165 Inc.	2164-2165 Inc.
Ann Arbor Township	15	2165-2166 Inc.	2165-2166 Inc.
Ann Arbor Township	15	2166-2167 Inc.	2166-2167 Inc.
Ann Arbor Township	15	2167-2168 Inc.	2167-2168 Inc.
Ann Arbor Township	15	2168-2169 Inc.	2168-2169 Inc.
Ann Arbor Township	15	2169-2170 Inc.	2169-2170 Inc.
Ann Arbor Township	15	2170-2171 Inc.	2170-2171 Inc.
Ann Arbor Township	15	2171-2172 Inc.	2171-2172 Inc.
Ann Arbor Township	15	2172-2173 Inc.	2172-2173 Inc.
Ann Arbor Township	15	2173-2174 Inc.	2173-2174 Inc.
Ann Arbor Township	15	2174-2175 Inc.	2174-2175 Inc.
Ann Arbor Township	15	2175-2176 Inc.	2175-2176 Inc.
Ann Arbor Township	15	2176-2177 Inc.	2176-2177 Inc.
Ann Arbor Township	15	2177-2178 Inc.	2177-2178 Inc.
Ann Arbor Township	15	2178-2179 Inc.	2178-2179 Inc.
Ann Arbor Township	15	2179-2180 Inc.	2179-2180 Inc.
Ann Arbor Township	15	2180-2181 Inc.	2180-2181 Inc.
Ann Arbor Township	15	2181-2182 Inc.	2181-2182 Inc.
Ann Arbor Township	15	2182-2183 Inc.	2182-2183 Inc.
Ann Arbor Township	15	2183-2184 Inc.	2183-2184 Inc.
Ann Arbor Township	15	2184-2185 Inc.	2184-2185 Inc.
Ann Arbor Township	15	2185-2186 Inc.	2185-2186 Inc.
Ann Arbor Township	15	2186-2187 Inc.	2186-2187 Inc.
Ann Arbor Township	15	2187-2188 Inc.	2187-2188 Inc.
Ann Arbor Township	15	2188-2189 Inc.	2188-2189 Inc.
Ann Arbor Township	15	2189-2190 Inc.	2189-2190 Inc.
Ann Arbor Township	15	2190-2191 Inc.	2190-2191 Inc.
Ann Arbor Township	15	2191-2192 Inc.	2191-2192 Inc.
Ann Arbor Township	15	2192-2193 Inc.	2192-2193 Inc.
Ann Arbor Township	15	2193-2194 Inc.	2193-2194 Inc.
Ann Arbor Township	15	2194-2195 Inc.	2194-2195 Inc.
Ann Arbor Township	15	2195-2196 Inc.	2195-2196 Inc.
Ann Arbor Township	15	2196-2197 Inc.	2196-2197 Inc.
Ann Arbor Township	15	2197-2198 Inc.	2197-2198 Inc.
Ann Arbor Township	15	2198-2199 Inc.	2198-2199 Inc.
Ann Arbor Township	15	2199-2200 Inc.	2199-2200 Inc.
Ann Arbor Township	15	2200-2201 Inc.	2200-2201 Inc.
Ann Arbor Township	15	2201-2202 Inc.	2201-2202 Inc.
Ann Arbor Township	15	2202-2203 Inc.	2202-2203 Inc.
Ann Arbor Township	15	2203-2204 Inc.	2203-2204 Inc.
Ann Arbor Township	15	2204-2205 Inc.	2204-2205 Inc.
Ann Arbor Township	15	2205-2206 Inc.	2205-2206 Inc.
Ann Arbor Township	15	2206-2207 Inc.	2206-2207 Inc.
Ann Arbor Township	15	2207-2208 Inc.	2207-2208 Inc.
Ann Arbor Township	15	2208-2209 Inc.	2208-2209 Inc.
Ann Arbor Township	15	2209-2210 Inc.	2209-2210 Inc.
Ann Arbor Township	15	2210-2211 Inc.	2210-2211 Inc.
Ann Arbor Township	15	2211-2212 Inc.	2211-2212 Inc.
Ann Arbor Township	15	2212-2213 Inc.	2212-2213 Inc.
Ann Arbor Township	15	2213-2214 Inc.	2213-2214 Inc.
Ann Arbor Township	15	2214-2215 Inc.	2214-2215 Inc.
Ann Arbor Township	15	2215-2216 Inc.	2215-2216 Inc.
Ann Arbor Township	15	2216-2217 Inc.	2216-2217 Inc.
Ann Arbor Township	15	2217-2218 Inc.	2217-2218 Inc.
Ann Arbor Township	15	2218-221	

BOWLING NEWS

Junior House League

Standings as of Oct. 17

	W	L
Clenners	11	1
Verline	11	1
Mixes	10	2
Sales & Service	9	3
State Finance	8	4
Bar	8	4
Under Bar	8	4
Automotive	7	5
No. 12	6	6
Book-Std.	5	7
T-Birds	4	8

Senior House League

Standings as of Oct. 21

	W	L
Parish Cleaners	11	1
Spaulding Chevrolet	10	2
Chelsea Grindling	10	2
G. E. Boys	10	2
Dana No. 2	10	2
Wolverine Tavern	10	2
Seltz's Tavern	10	2
Murphy's Barber Shop	10	2
Schneider's Market	10	2
Dana No. 1	10	2
Sylvan Center	10	2
Wonder Bar	10	2

Chelsea Suburban League

Standings as of Oct. 16

	W	L
Kresge Arborland	11	1
Western & Southern	10	2
Dancer's	10	2
Floor Mobil	10	2
Putty Ann	10	2
Dana Corp.	10	2
State Farm Ins.	10	2
G. A. Sales & Service	10	2
Pittsfield Plastics	10	2
Chelsea Lanes	10	2
Waterloo Garage	10	2
Artex Roll-Ons	10	2

100 games and over: S. Hopkins, 222-207; J. Warmingham, 222-201; G. Weir, 233; B. More, 208; C. Popovich, 200; D. H. 200; G. Stephens, 200.

500 series and over: S. Hopkins, 500; J. Warmingham, 500.

400 series and over: G. Weir, 400; C. Popovich, 400; B. More, 400; S. Hopkins, 400; J. Warmingham, 400.

300 series and over: G. Weir, 300; C. Popovich, 300; B. More, 300; S. Hopkins, 300; J. Warmingham, 300.

200 series and over: G. Weir, 200; C. Popovich, 200; B. More, 200; S. Hopkins, 200; J. Warmingham, 200.

100 series and over: G. Weir, 100; C. Popovich, 100; B. More, 100; S. Hopkins, 100; J. Warmingham, 100.

50 series and over: G. Weir, 50; C. Popovich, 50; B. More, 50; S. Hopkins, 50; J. Warmingham, 50.

25 series and over: G. Weir, 25; C. Popovich, 25; B. More, 25; S. Hopkins, 25; J. Warmingham, 25.

10 series and over: G. Weir, 10; C. Popovich, 10; B. More, 10; S. Hopkins, 10; J. Warmingham, 10.

5 series and over: G. Weir, 5; C. Popovich, 5; B. More, 5; S. Hopkins, 5; J. Warmingham, 5.

2 series and over: G. Weir, 2; C. Popovich, 2; B. More, 2; S. Hopkins, 2; J. Warmingham, 2.

1 series and over: G. Weir, 1; C. Popovich, 1; B. More, 1; S. Hopkins, 1; J. Warmingham, 1.

0 series and over: G. Weir, 0; C. Popovich, 0; B. More, 0; S. Hopkins, 0; J. Warmingham, 0.

0 series and over: G. Weir, 0; C. Popovich, 0; B. More, 0; S. Hopkins, 0; J. Warmingham, 0.

0 series and over: G. Weir, 0; C. Popovich, 0; B. More, 0; S. Hopkins, 0; J. Warmingham, 0.

0 series and over: G. Weir, 0; C. Popovich, 0; B. More, 0; S. Hopkins, 0; J. Warmingham, 0.

0 series and over: G. Weir, 0; C. Popovich, 0; B. More, 0; S. Hopkins, 0; J. Warmingham, 0.

0 series and over: G. Weir, 0; C. Popovich, 0; B. More, 0; S. Hopkins, 0; J. Warmingham, 0.

0 series and over: G. Weir, 0; C. Popovich, 0; B. More, 0; S. Hopkins, 0; J. Warmingham, 0.

0 series and over: G. Weir, 0; C. Popovich, 0; B. More, 0; S. Hopkins, 0; J. Warmingham, 0.

0 series and over: G. Weir, 0; C. Popovich, 0; B. More, 0; S. Hopkins, 0; J. Warmingham, 0.

0 series and over: G. Weir, 0; C. Popovich, 0; B. More, 0; S. Hopkins, 0; J. Warmingham, 0.

0 series and over: G. Weir, 0; C. Popovich, 0; B. More, 0; S. Hopkins, 0; J. Warmingham, 0.

0 series and over: G. Weir, 0; C. Popovich, 0; B. More, 0; S. Hopkins, 0; J. Warmingham, 0.

0 series and over: G. Weir, 0; C. Popovich, 0; B. More, 0; S. Hopkins, 0; J. Warmingham, 0.

0 series and over: G. Weir, 0; C. Popovich, 0; B. More, 0; S. Hopkins, 0; J. Warmingham, 0.

0 series and over: G. Weir, 0; C. Popovich, 0; B. More, 0; S. Hopkins, 0; J. Warmingham, 0.

0 series and over: G. Weir, 0; C. Popovich, 0; B. More, 0; S. Hopkins, 0; J. Warmingham, 0.

0 series and over: G. Weir, 0; C. Popovich, 0; B. More, 0; S. Hopkins, 0; J. Warmingham, 0.

0 series and over: G. Weir, 0; C. Popovich, 0; B. More, 0; S. Hopkins, 0; J. Warmingham, 0.

0 series and over: G. Weir, 0; C. Popovich, 0; B. More, 0; S. Hopkins, 0; J. Warmingham, 0.

0 series and over: G. Weir, 0; C. Popovich, 0; B. More, 0; S. Hopkins, 0; J. Warmingham, 0.

0 series and over: G. Weir, 0; C. Popovich, 0; B. More, 0; S. Hopkins, 0; J. Warmingham, 0.

0 series and over: G. Weir, 0; C. Popovich, 0; B. More, 0; S. Hopkins, 0; J. Warmingham, 0.

0 series and over: G. Weir, 0; C. Popovich, 0; B. More, 0; S. Hopkins, 0; J. Warmingham, 0.

0 series and over: G. Weir, 0; C. Popovich, 0; B. More, 0; S. Hopkins, 0; J. Warmingham, 0.

0 series and over: G. Weir, 0; C. Popovich, 0; B. More, 0; S. Hopkins, 0; J. Warmingham, 0.

0 series and over: G. Weir, 0; C. Popovich, 0; B. More, 0; S. Hopkins, 0; J. Warmingham, 0.

0 series and over: G. Weir, 0; C. Popovich, 0; B. More, 0; S. Hopkins, 0; J. Warmingham, 0.

0 series and over: G. Weir, 0; C. Popovich, 0; B. More, 0; S. Hopkins, 0; J. Warmingham, 0.

0 series and over: G. Weir, 0; C. Popovich, 0; B. More, 0; S. Hopkins, 0; J. Warmingham, 0.

0 series and over: G. Weir, 0; C. Popovich, 0; B. More, 0; S. Hopkins, 0; J. Warmingham, 0.

0 series and over: G. Weir, 0; C. Popovich, 0; B. More, 0; S. Hopkins, 0; J. Warmingham, 0.

0 series and over: G. Weir, 0; C. Popovich, 0; B. More, 0; S. Hopkins, 0; J. Warmingham, 0.

0 series and over: G. Weir, 0; C. Popovich, 0; B. More, 0; S. Hopkins, 0; J. Warmingham, 0.

0 series and over: G. Weir, 0; C. Popovich, 0; B. More, 0; S. Hopkins, 0; J. Warmingham, 0.

0 series and over: G. Weir, 0; C. Popovich, 0; B. More, 0; S. Hopkins, 0; J. Warmingham, 0.

0 series and over: G. Weir, 0; C. Popovich, 0; B. More, 0; S. Hopkins, 0; J. Warmingham, 0.

0 series and over: G. Weir, 0; C. Popovich, 0; B. More, 0; S. Hopkins, 0; J. Warmingham, 0.

0 series and over: G. Weir, 0; C. Popovich, 0; B. More, 0; S. Hopkins, 0; J. Warmingham, 0.

0 series and over: G. Weir, 0; C. Popovich, 0; B. More, 0; S. Hopkins, 0; J. Warmingham, 0.

0 series and over: G. Weir, 0; C. Popovich, 0; B. More, 0; S. Hopkins, 0; J. Warmingham, 0.

0 series and over: G. Weir, 0; C. Popovich, 0; B. More, 0; S. Hopkins, 0; J. Warmingham, 0.

0 series and over: G. Weir, 0; C. Popovich, 0; B. More, 0; S. Hopkins, 0; J. Warmingham, 0.

0 series and over: G. Weir, 0; C. Popovich, 0; B. More, 0; S. Hopkins, 0; J. Warmingham, 0.

0 series and over: G. Weir, 0; C. Popovich, 0; B. More, 0; S. Hopkins, 0; J. Warmingham, 0.

0 series and over: G. Weir, 0; C. Popovich, 0; B. More, 0; S. Hopkins, 0; J. Warmingham, 0.

0 series and over: G. Weir, 0; C. Popovich, 0; B. More, 0; S. Hopkins, 0; J. Warmingham, 0.

0 series and over: G. Weir, 0; C. Popovich, 0; B. More, 0; S. Hopkins, 0; J. Warmingham, 0.

0 series and over: G. Weir, 0; C. Popovich, 0; B. More, 0; S. Hopkins, 0; J. Warmingham, 0.

0 series and over: G. Weir, 0; C. Popovich, 0; B. More, 0; S. Hopkins, 0; J. Warmingham, 0.

0 series and over: G. Weir, 0; C. Popovich, 0; B. More, 0; S. Hopkins, 0; J. Warmingham, 0.

0 series and over: G. Weir, 0; C. Popovich, 0; B. More, 0; S. Hopkins, 0; J. Warmingham, 0.

0 series and over: G. Weir, 0; C. Popovich, 0; B. More, 0; S. Hopkins, 0; J. Warmingham, 0.

0 series and over: G. Weir, 0; C. Popovich, 0; B. More, 0; S. Hopkins, 0; J. Warmingham, 0.

0 series and over: G. Weir, 0; C. Popovich, 0; B. More, 0; S. Hopkins, 0; J. Warmingham, 0.

0 series and over: G. Weir, 0; C. Popovich, 0; B. More, 0; S. Hopkins, 0; J. Warmingham, 0.

0 series and over: G. Weir, 0; C. Popovich, 0; B. More, 0; S. Hopkins, 0; J. Warmingham, 0.

0 series and over: G. Weir, 0; C. Popovich, 0; B. More, 0; S. Hopkins, 0; J. Warmingham, 0.

0 series and over: G. Weir, 0; C. Popovich, 0; B. More, 0; S. Hopkins, 0; J. Warmingham, 0.

0 series and over: G. Weir, 0; C. Popovich, 0; B. More, 0; S. Hopkins, 0; J. Warmingham, 0.

0 series and over: G. Weir, 0; C. Popovich, 0; B. More, 0; S. Hopkins, 0; J. Warmingham, 0.

0 series and over: G. Weir, 0; C. Popovich, 0; B. More, 0; S. Hopkins, 0; J. Warmingham, 0.

0 series and over: G. Weir, 0; C. Popovich, 0; B. More, 0; S. Hopkins, 0; J. Warmingham, 0.

0 series and over: G. Weir, 0; C. Popovich, 0; B. More, 0; S. Hopkins, 0; J. Warmingham, 0.

0 series and over: G. Weir, 0; C. Popovich, 0; B. More, 0; S. Hopkins, 0; J. Warmingham, 0.

0 series and over: G. Weir, 0; C. Popovich, 0; B. More, 0; S. Hopkins, 0; J. Warmingham, 0.

0 series and over: G. Weir, 0; C. Popovich, 0; B. More, 0; S. Hopkins, 0; J. Warmingham, 0.

0 series and over: G. Weir, 0; C. Popovich, 0; B. More, 0; S. Hopkins, 0; J. Warmingham, 0.

0 series and over: G. Weir, 0; C. Popovich, 0; B. More, 0; S. Hopkins, 0; J. Warmingham, 0.

0 series and over: G. Weir, 0; C. Popovich, 0; B. More, 0; S. Hopkins, 0; J. Warmingham, 0.

0 series and over: G. Weir, 0; C. Popovich, 0; B. More, 0; S. Hopkins, 0; J. Warmingham, 0.

SPORTS CORNER



THE ALL-AMERICAN SUMMER 5-4-3-2-1 SPRING ACE LED THE TROJANS TO THE NATIONAL CHAMPIONSHIP AND A WIN OVER INDIANA IN THE ROSE BOWL.

Eisenbiser, 180; R. Hummel, 182-192; A. Knickerbocker, 174; N. Kern, 161; M. Ritter, 165-175; R. Johnson, 190-151; C. Hansen, 155; P. Poertner, 158-181-151; Kay Buss, 164; T. Scharphora, 160; A. Boham, 161-170; A. Turner, 152-157; H. Morgan, 160; D. Alber, 157-155-157.

Women's high series: Chelsea Lanes, 2,048.

Women's high game: P. Pardon, 100.

Women's 150 or over series: N. Collins, 180-160-180; P. E. Ott, 168-168-183; B. Fritz, 177-173; P. Huston, 167-181; S. Timmerman, 179; P. Pardon, 172-190; C. Kiellwasser, 171; J. Buku, 153-183.

Women's 425 or over series: S. Timmerman, 455; P. Pardon, 488; B. Fritz, 498; P. Huston, 478; N. Collins, 531; P. Elliott, 517; J. Buku, 476.

Men's high game: A. Sannes, 558.

Men's high series: A. Sannes, 558.

Men's 175 or over games: J. Elliott, 199-180; R. Huston, 180; J. Toon, 192; O. Timmerman, 181; A. Sannes, 215-182; R. Buss, 188; K. Pardon, 185-182; R. Kiellwasser, 212; R. Kotar, 177.

Men's 500 or over series: R. Kiellwasser, 580; O. Timmerman, 515; A. Sannes, 558; K. Pardon, 519; R. Huston, 532; J. Elliott, 535.

Chelsea Lanes Mixed League Standings as of Oct. 18

	W	L
Rabbitt & Althouse	17	11
Lyndon Color Lab	17	11
Poor-Fitz	17	11
Dandy & Turner	17	11
Chelsea Lanes	15	13
H. & H.	15	13
Triangle Trailer Sales	14	14
Wolverine No. 2	13	15
Johnson's Tool Shop	13	15
Gephart & Barkley	12	16
Wolverine No. 3	11	17
Wolverine No. 1	8	20

Men's 175 and over: O. Johnson, 228-212; M. Poertner, 190-185-213; J. Harmon, 205-180; R. Kiel, 180-180-204; F. Powell, 204; M. Rabbitt, 201-202-177; H. Burnett, 185-201; R. Doody, 183-190; J. Collins, 195; A. Sannes, 193; G. Burnett, 191; D. Lyndon, 190; R. Morgan, 188; B. Robertson, 181; R. Fike, 180; B. Fitzsimmons, 178.

Men's 475 and over: O. Johnson, 514; M. Poertner, 558; M. Rabbitt, 580; R. Kiel, 504; H. Burnett, 560; R. Doody, 551; J. Harmon, 540; D. Lyndon, 525; J. Collins, 525; G. Burnett, 510; F. Powell, 504; R. Hutzal, 491; R. Fike, 489; J. Goltra, 488; B. Fitzsimmons, 484; B. Robertson, 475.

Women's 150 and over: H. Morgan, 197-172; L. Doody, 190-160-150; K. Lyndon, 165-160-185; M. Powell, 174-180-172; P. Fitzsimmons, 152-160-180; V. Harvey, 174; A. Turner, 170; R. Johnson, 168; B. Fike, 163-160-150; F. Gephart, 162-160; N. Collins, 160-151; E. Harmon, 153-150; P. Poertner, 158; J. Rabbitt, 157-152; M. Burnett, 153-165.

Women's 450 and over: K. Lyndon, 536; M. Powell, 532; L. Doody, 506; H. Morgan, 503; P. Fitzsimmons, 494; B. Fike, 475; F. Gephart, 471; V. Harvey, 458; N. Collins, 455.

Old Timers League Standings as of Oct. 18

	W	L
Bob & Otto	20	8
City Bus	17	11
Great Lakes	14 1/2	13 1/2
Nelson Rental	14	14
Washtenaw Lanes	14	14
Chelsea Lanes	14	14
Colonial Lanes	13 1/2	14 1/2
Hatzel Service	13	15
Mather Co.	13	15
Hartman Ins.	13	15
Ypsi-Arbor	12	16
Stein & Goetz	11	17

High team game and series: Bob & Otto Standard, 768-2,260.

High ind. game: Wallace Wysocki, 222.

Men's 150 or over games: N. Collins, 180-160-180; P. E. Ott, 168-168-183; B. Fritz, 177-173; P. Huston, 167-181; S. Timmerman, 179; P. Pardon, 172-190; C. Kiellwasser, 171; J. Buku, 153-183.

Women's 425 or over series: S. Timmerman, 455; P. Pardon, 488; B. Fritz, 498; P. Huston, 478; N. Collins, 531; P. Elliott, 517; J. Buku, 476.

Men's high game: A. Sannes, 558.

Men's high series: A. Sannes, 558.

Men's 175 or over games: J. Elliott, 199-180; R. Huston, 180; J. Toon, 192; O. Timmerman, 181; A. Sannes, 215-182; R. Buss, 188; K. Pardon, 185-182; R. Kiellwasser, 212; R. Kotar, 177.

Men's 500 or over series: R. Kiellwasser, 580; O. Timmerman, 515; A. Sannes, 558; K. Pardon, 519; R. Huston, 532; J. Elliott, 535.

Chelsea Women's League Standings as of Oct. 16

	W	L
Foster's	21	7
Chelsea Cleaners	20	8
Chelsea Lanes	16 1/2	11 1/2
Jiffy Mixers	16	12
Palmer Motor Sales	15	13
Wolverine	15	13
Chelsea Milling	15	13
Chelsea Grindling	10	18
Dandy's	9 1/2	18 1/2
Schneider's	9	19
The Pub	8	20
Zephyr Service	8	20

450 series or better: D. Miller, 457; B. McKinley, 454; C. Stoffer, 455; R. Lutovsky, 460; B. Parish, 461; D. Graden, 468; D. Frisbie, 509; L. Orlowski, 458; D. Judson, 460; R. Hummel, 508; A. Knickerbocker, 456; M. Ritter, 466; R. Johnson, 486; P. Poertner, 490.

150 games or better: D. Miller, 162-160; B. McKinley, 164-162; L. Stewart, 155; C. Stoffer, 171; R. Lutovsky, 155-156; B. Parish, 155-153; D. Graden, 171-157; D. Frisbie, 181-185; L. Orlowski, 160-168; D. Fouty, 157; D. Judson, 167-184; P. Borders, 153-160; B. Fike, 160; H. Ringe, 158; D.

Men's 150 or over games: N. Collins, 180-160-180; P. E. Ott, 168-168-183; B. Fritz, 177-173; P. Huston, 167-181; S. Timmerman, 179; P. Pardon, 172-190; C. Kiellwasser, 171; J. Buku, 153-183.

Women's 425 or over series: S. Timmerman, 455; P. Pardon, 488; B. Fritz, 498; P. Huston, 478; N. Collins, 531; P. Elliott, 517; J. Buku, 476.

Men's high game: A. Sannes, 558.

Men

GENERAL ELECTION

To the Qualified Electors:

NOTICE IS HEREBY GIVEN:

That a General Election will be held in the

TOWNSHIP OF LIMA

(Precinct No. 1)

County of Washtenaw, State of Michigan

LIMA COMMUNITY HALL

within said Township on

TUESDAY, NOVEMBER 5, 1968

For the Purpose of Electing the Following Officers, viz:

NATIONAL President and Vice-President of the United States

CONGRESSIONAL Representative in Congress

LEGISLATIVE State Representative

STATE Two Members of the State Board of Education, Two Regents of the University of Michigan, Two Trustees of Michigan State University, Two Governors of Wayne State University.

COUNTY Prosecuting Attorney, Sheriff, County Clerk, County Treasurer, Register of Deeds, Auditor in Counties electing same, Drain Commissioner, Coroners, Surveyor, One County Supervisor from each District, and such other Officers as are elected at that time.

TOWNSHIP One Trustee

AND FOR THE PURPOSE OF ELECTING THE FOLLOWING

NON-PARTISAN OFFICERS, VIZ:

Justice of the Supreme Court

Judge of the Court of Appeals

Judge of the District Court

AND ALSO TO VOTE ON THE FOLLOWING

CONSTITUTIONAL AMENDMENTS:

1. Proposed Amendment to remove the present restriction against the adoption of a Graduated Income Tax.
2. Referendum on Act 6 of the Public Acts of 1967 (Daylight Savings Time)
3. Referendum on Act 76 of the Public Acts of 1968 (Proposal relating to Bonding to Abate Water Pollution)
4. Referendum on Act 257 of the Public Acts of 1968 (Proposal relating to Bonding for Public Recreational Purposes)
5. Proposed Amendment to permit the Election of Members of the Legislature during their term of office to another State Office.

AND ALSO TO VOTE ON THE FOLLOWING COUNTY PROPOSITION: "Shall the tax limitation on the total amount of general ad valorem taxes which may be imposed each year for all purposes upon real and tangible personal property in Washtenaw County, Michigan, be increased as provided in Section 6, Article IX of the Constitution of Michigan for a period of three years from (1969-1971) both inclusive by one (1) mill, (one dollar per thousand of State equalized valuation) with the revenue to be allocated to and expended by the Board of County Road Commissioners of the County of Washtenaw exclusively for Highway, road and street purposes to expedite the construction of roads and streets in Washtenaw County?"

COUNTY TREASURER'S STATEMENT

(As required by Act 293, Public Acts of Michigan, 1947)
I, Sylvester A. Leonard, County Treasurer of the County of Washtenaw, State of Michigan, do hereby certify that, according to the records of this Office, as of September 6, 1968, the total of all voted increases in the tax rate limitation, above the 18 mills established taxable property in Washtenaw County, State of Michigan, in said County, is as follows:

Local Unit	County of Washtenaw	Years	Voted Increase	Increase Effective
Ann Arbor Township	None	1967-1968	1.000000	1967-1968
Augusta Township	None	1967-1968	1.000000	1967-1968
Bridgewater Township	None	1967-1968	1.000000	1967-1968
Dexter Township	None	1967-1968	1.000000	1967-1968
Freedom Township	None	1967-1968	1.000000	1967-1968
Lima Township	None	1967-1968	1.000000	1967-1968
Lyndon Township	None	1967-1968	1.000000	1967-1968
Manchester Township	None	1967-1968	1.000000	1967-1968
Northfield Township	None	1967-1968	1.000000	1967-1968
Saline Township	None	1967-1968	1.000000	1967-1968
Superior Township	None	1967-1968	1.000000	1967-1968
Ypsilanti Township	None	1967-1968	1.000000	1967-1968
Washtenaw Community College	2.000000	1967-1971	2.000000	1967-1971
Oakland Community College	1.000000	1967-1971	1.000000	1967-1971
Schoolcraft Community College	1.000000	1967-1971	1.000000	1967-1971
Washtenaw County Intermediate School District	1.000000	1967-1971	1.000000	1967-1971
Ingham County Intermediate School District	1.000000	1967-1971	1.000000	1967-1971
Jackson County Intermediate School District	1.000000	1967-1971	1.000000	1967-1971
Leavenworth County Intermediate School District	1.000000	1967-1971	1.000000	1967-1971
Livestock County Intermediate School District	1.000000	1967-1971	1.000000	1967-1971
Oakland County Intermediate School District	1.000000	1967-1971	1.000000	1967-1971
Ann Arbor Public Schools District	1.000000	1967-1971	1.000000	1967-1971
Ypsilanti Public Schools District	1.000000	1967-1971	1.000000	1967-1971
Chelsea Schools District	1.000000	1967-1971	1.000000	1967-1971
Lincoln Consolidated School District	1.000000	1967-1971	1.000000	1967-1971
Manchester Public Schools District	1.000000	1967-1971	1.000000	1967-1971
Milan Area Schools District	1.000000	1967-1971	1.000000	1967-1971
Saline Area Schools District	1.000000	1967-1971	1.000000	1967-1971
Whitmore Lake Schools District	1.000000	1967-1971	1.000000	1967-1971
Willow Run Public Schools District	1.000000	1967-1971	1.000000	1967-1971
Clinton Community Schools	1.000000	1967-1971	1.000000	1967-1971
Columbia School District	1.000000	1967-1971	1.000000	1967-1971
Napoleon Rural Agriculture School District	1.000000	1967-1971	1.000000	1967-1971
Northville Public School District	1.000000	1967-1971	1.000000	1967-1971
Pinekeny Community Schools District	1.000000	1967-1971	1.000000	1967-1971
Plymouth Community Schools	1.000000	1967-1971	1.000000	1967-1971
South Lyon Community School District	1.000000	1967-1971	1.000000	1967-1971
Stockbridge Community Schools	1.000000	1967-1971	1.000000	1967-1971
Van Buren Township School District	1.000000	1967-1971	1.000000	1967-1971

Dated: September 6, 1968

Notice Relative to Opening and Closing of the Polls

ELECTION LAW, ACT 116, P. A. 1954

SECTION 720. On the day of any election the polls shall be opened at 7 o'clock in the forenoon, and shall be continuously open until 8 o'clock in the afternoon and no longer. Every qualified elector present and in line at the polls at the hour prescribed for the closing thereof shall be allowed to vote.

THE POLLS of said election will be open at 7 o'clock a.m. and will remain open until 8 o'clock p.m. of said day of election.

Duane Luick, Township Clerk

SOUTH ELEMENTARY SCHOOL NOTES

HONOR ROLL

First Marking Period—Oct. 11

FIFTH GRADE—

B-Dora Alexander, Steven Bow-

en, Lois Butler, Yvonne Clark,

Sandra Crouch, Mark Dalton, Pan-

ela Greenleaf, Randy Guenther,

Timothy Hinz, Annette Houle,

Karen Kern, Penny Kincer, Mike

Kozminski, Paul Marshall, Mat-

thew Merkel, Jean Norton, Nora

Patrick, William Rademacher, Bar-

bara Roy, David Schaible, Susan

Schulze, Brenda Shadlow, Pamela

Siebert, John Storey, Julie Tite.

KINDERGARTEN—

Room 3

Teacher: Mrs. Bower

We are all having fun with our

Halloween pumpkins. This week

we made an orange scrap book

with pictures we brought from

home.

Karl Schenk, Lisa Colvia, Mike

Wade and Troy Satterthwaite all

had birthdays this week.

Everyone enjoys singing our new

Halloween song.

Room 1

Teacher: Mrs. Michelson

We went for a nature walk this

week. We found leaves of many

shapes, sizes, and colors. We de-

corated our windows with them

and took some of them home.

First, we let them dry and pressed

them flat under a pile of books

and papers. Next, we pressed

them between two pieces of wax

paper. We used a hot iron.

We have been discovering new

colors. When we paint on our

eggs we find them. We are learn-

ing new Halloween songs, so that

we can sing them at our Halloween

party.

We are interested in the astro-

nomists. We like writing stories to-

gether about what we do and

what we are learning about things

around us. We are learning about

ourselves, too.

Room 6

Teacher: Mrs. White

Reporter: Nancy Heller

We went to the fire station

during Fire-Prevention Week. We

saw four fire engines and all the

firemen's suits, hats and coats.

Chief Gaken let everyone squirt

the fire hose, and he gave all of

us a lollipop.

We have been learning new

songs about Halloween, and we

are getting very excited about

our Halloween party.

We have had a lot of birthday

parties lately. There are now a

lot of new toys in our room, and

we are taking very good care of

them. We are working especially

hard with our rhythm band.

Room 8

Teacher: Mrs. Morgan

Reporter: Patrick Ferrier

Our class has been collecting

rocks. We found them on the

playground, by the sidewalks, in

our driveways, and around our

homes. We learned that rocks are

almost everywhere.

We also learned that rocks are

of different shapes and sizes. Sand

is made up of very small rocks.

Room 11

Teacher: Miss Myers

We visited the Washtenaw Hu-

mane Society on Oct. 8. When we

returned, we each wrote a thank

you note. We liked the monkeys

best.

We are learning how to work

better as a group. We understand

that for one child to concentrate,

the whole class must be concen-

trating with him. We are working

in creative dramatics.

Monday, Miss Myers brought us

a new pet. His name is Charlie.

Charlie is a scampy and curious,

little gerbil. We enjoy him very

much.

Timothy Wireman is moving

back to Kentucky. We'll all miss

him.

Two baby bunnies visited us

today.

Room 4

Teacher: Mrs. Stewart

We made scary owls and fall

leaves. (David Morris). We made

filmmen hats. (Theresa Ames). We

decorated the room for Hal-

lowe'en. (Theresa Hoffman). We

have Halloween stories to read.

(Paul Hoffmeyer). We are learn-

ing to read a print. (Jamie At-

kinson). Connie Bentley will be

coming back from her stay in the

hospital soon. (Mrs. Stewart).

Room 5

Teacher: Mrs. Thodeson

On our nature walk we found

nuts, pretty leaves and wild flow-

ers. We have some caterpillars

and cocoons on our Science table.

We have been making pumpkins

and witches for Halloween. We

made stories about them for our

reading chart. We like to paint

designs with bright fall colors.

Room 2

Teacher: Mrs. Thornton

Reporters: Judy Schaeffer

and John Thomson

We are starting to decorate our

room for Halloween. We learned

a Halloween poem. We are learn-

ing many new words in reading.

Connie Anderson brought her

pet duck to school. Marsha Hay-

wood is going to move. Dog Det-

ting helped get new library books

for our room.

SECOND GRADE—

Room 7

Teacher: Mrs. Feldmiller

We have been working hard in

all subjects. We have had spelling

tests and arithmetic matches which

have kept us quite busy.

We have taken a field trip to

the Humane Society in Ann Ar-

bor, where we saw many dogs and

cats, and even some monkeys.

They gave us little books that

taught us how to care for our

pets.

We are very anxious for that

exciting holiday which comes up

at the end of this month. In case

you hadn't heard—it's Halloween!

Room 11

Teacher: Miss Myers

We visited the Washtenaw Hu-

mane Society on Oct. 8. When we

returned, we each wrote a thank

you note. We liked the monkeys

best

Older Adult Group Meets Saturday at Methodist Church

Thirty-two members and guests are present Saturday, Oct. 19, at the monthly meeting of the Older Adult Group of the Methodist Church. The gathering took place in the church social center, opened with prayer by the Rev. Robert Worrege. A pot-luck dinner was served, table decorations carrying out the theme. In charge of making the tables were Miss Hieber and Mrs. Ella Walker. A member from Ann Arbor, Mrs. Walker's guests at the dining Mr. and Mrs. Delkey of Arbor, joined the group as members.

Mrs. Walker was in charge of after-dinner program which included several games. A devotional service was led by Herbert Paul.

Observance of the birthdays of five members, Mrs. Harold had provided a special birthday cake. Honored were Mrs. Olga Singer, Mrs. Gladys Klump, Mrs. Nava Prudden, Mrs. Marcia Main and Mrs. Blanche Mohr.

Jennie Ives, a member who was sent a card which all others signed.

It was announced that the Rev. Wess will serve as program man for the year and Lyman and Miss Laura Hieber serve as the welcoming committee.

Thanksgiving dinner will be held on the Nov. 16 meeting of the group and the committee in charge—Mrs. Lyman Adams, Rae Lillie and Mrs. Carl Klosser—will see to the furnishing of chicken, rolls, butter and while the remainder of the will be brought in by those dining.

Mrs. and Mrs. Iven Weiss and Bertha Kate Riemenschneider to be in charge of arranging tables and table decorations the November meeting.

'White Elephant' Sale Slated Tuesday To Aid Spaulding Auxiliary

An "Elegant White Elephant Sale" and a silver tea will be sponsored by Mrs. Ben Donaldson, 130 Cavanaugh Lake, Tuesday from 2-5 p.m.

The sale will be held in the "covered nook" at her home and include items beginning at 50 cents. Persons attending the sale will find a variety of articles including antiques, on sale, in a wide range of prices.

A silver tea will be in progress and all are invited to enjoy the refreshments. Anyone interested in seeing Mr. Donaldson's well-known Bible collection will be welcome to do so. Donaldson will be available to answer questions concerning his collection.

All proceeds from the sale will go to the Spaulding for Children Auxiliary. Spaulding memberships and Christmas cards will be sold in the "covered nook." Browsers are welcome.

Fashion Notes

Separates are favorites of the college girl. With her plaid coat she can pick up the colors in skirts, blouses, and extra frocks. Add a jacket and a sweater or two and she has a big part of her fall wardrobe.

Belts are low or very high. Big buckles are used on some of these belts.

AG. ENTREPRENEURS

Agricultural Entrepreneurs Farm Bureau Group met Thursday, Oct. 17, at the home of Mrs. Homer Parker. Mrs. Parker's son, Stanley assisted as host. Thirteen families answered the roll call with the Farm Bureau creed and flag pledge.

Raymond Schairer urged everyone to vote in the November general election. He also discussed some of the proposals which will appear on the November ballot.

C. A. Hines, United States agricultural statistician, will be a speaker Jan. 16. He will have a 30-minute film, and a question and answer period. Other groups will be asked to attend this meeting.

A committee was appointed to plan a Christmas program for Dec. 19. Mrs. Lewis Haselwerdt, chairman, Mrs. Lloyd Boyce, Mrs. Laverne Coy and Mrs. Charles Trinkle.

Discussion on Future Farm Programs was led by LaVerne Coy. Next meeting will be Nov. 21, with Mr. and Mrs. Harold Weeks as the host couple.



Mrs. Lowry Mansell

Marilyn Balmer, Lowry Mansell Return from Western Honeymoon

At home after a two-week honeymoon in California are Lowry Mansell and his new bride, the former Marilyn Balmer.

The couple were wed Oct. 5 in an evening ceremony at the United Methodist church in Chelsea. The Rev. Wilbur Silvernail administered the vows that joined the daughter of Mr. and Mrs. Floyd Balmer of 16610 Roe Rd., Grass Lake, and the son of Mr. and Mrs. William B. Mansell of Hoy St., Livonia.

Mrs. Charles Mansell, sister-in-law of the bride, from Peru, Ind., sang "I Believe." Organ music was provided by Darrell Rodgers of Hillsdale.

The bride wore a white satin brocade gown made by Mrs. Gary Roderick, sister of the bride, of Grass Lake. It featured an empire waist, slightly A-lined, with a train attached at the shoulders and lined in satin. A fingertip veil attached to a ring headpiece and a white carnation and orchid bouquet completed her outfit.

The maid of honor was Miss Irene Balmer, sister of the bride. She wore a pale blue sleeveless dress of tulle and wool, similar in style to that of the bride. Her flowers were white mums.

Bridesmaids were Mrs. William Sweetginn and Miss Sandy Stanley of Ann Arbor and Mrs. Darrell Rodgers of Hillsdale. They wore outfits identical to that of the maid of honor and carried yellow and white mums.

The bride's mother wore a royal blue sheath with navy blue accessories. Her corsage was fashioned with pink tea roses and white carnations.

The mother of the bridegroom wore a royal blue brocade dress with royal blue accessories and a yellow corsage similar to that of the bride's mother.

Best man was David Mansell, brother of the bridegroom. The ushers were William Collins and Robert Mayle of Livonia and Charles Mansell, brother of the bridegroom, from Peru, Ind.

A reception was given in the church basement. Miss Dola Balmer, aunt of the bride, from Hudson, poured punch. Mrs. Carl Roberts, another aunt, from Beaver, poured coffee. Mrs. Gary Roderick cut and served the cake. Miss Bonnie Crockett of Beaverton.

There were 11 members present. Refreshments were served by Mrs. Duane Landwehr and Mrs. Doll. The next meeting will be at the home of Mrs. Landwehr with Mrs. Frank Donley from Spaulding for Children as the guest speaker. Members should bring items for the Social Service for Christmas distribution.

Items were collected for soldiers in Vietnam.

There were 11 members present. Refreshments were served by Mrs. Duane Landwehr and Mrs. Doll. The next meeting will be at the home of Mrs. Landwehr with Mrs. Frank Donley from Spaulding for Children as the guest speaker. Members should bring items for the Social Service for Christmas distribution.

There were 11 members present. Refreshments were served by Mrs. Duane Landwehr and Mrs. Doll. The next meeting will be at the home of Mrs. Landwehr with Mrs. Frank Donley from Spaulding for Children as the guest speaker. Members should bring items for the Social Service for Christmas distribution.

There were 11 members present. Refreshments were served by Mrs. Duane Landwehr and Mrs. Doll. The next meeting will be at the home of Mrs. Landwehr with Mrs. Frank Donley from Spaulding for Children as the guest speaker. Members should bring items for the Social Service for Christmas distribution.

There were 11 members present. Refreshments were served by Mrs. Duane Landwehr and Mrs. Doll. The next meeting will be at the home of Mrs. Landwehr with Mrs. Frank Donley from Spaulding for Children as the guest speaker. Members should bring items for the Social Service for Christmas distribution.

There were 11 members present. Refreshments were served by Mrs. Duane Landwehr and Mrs. Doll. The next meeting will be at the home of Mrs. Landwehr with Mrs. Frank Donley from Spaulding for Children as the guest speaker. Members should bring items for the Social Service for Christmas distribution.

There were 11 members present. Refreshments were served by Mrs. Duane Landwehr and Mrs. Doll. The next meeting will be at the home of Mrs. Landwehr with Mrs. Frank Donley from Spaulding for Children as the guest speaker. Members should bring items for the Social Service for Christmas distribution.

There were 11 members present. Refreshments were served by Mrs. Duane Landwehr and Mrs. Doll. The next meeting will be at the home of Mrs. Landwehr with Mrs. Frank Donley from Spaulding for Children as the guest speaker. Members should bring items for the Social Service for Christmas distribution.

There were 11 members present. Refreshments were served by Mrs. Duane Landwehr and Mrs. Doll. The next meeting will be at the home of Mrs. Landwehr with Mrs. Frank Donley from Spaulding for Children as the guest speaker. Members should bring items for the Social Service for Christmas distribution.

There were 11 members present. Refreshments were served by Mrs. Duane Landwehr and Mrs. Doll. The next meeting will be at the home of Mrs. Landwehr with Mrs. Frank Donley from Spaulding for Children as the guest speaker. Members should bring items for the Social Service for Christmas distribution.

There were 11 members present. Refreshments were served by Mrs. Duane Landwehr and Mrs. Doll. The next meeting will be at the home of Mrs. Landwehr with Mrs. Frank Donley from Spaulding for Children as the guest speaker. Members should bring items for the Social Service for Christmas distribution.

There were 11 members present. Refreshments were served by Mrs. Duane Landwehr and Mrs. Doll. The next meeting will be at the home of Mrs. Landwehr with Mrs. Frank Donley from Spaulding for Children as the guest speaker. Members should bring items for the Social Service for Christmas distribution.

There were 11 members present. Refreshments were served by Mrs. Duane Landwehr and Mrs. Doll. The next meeting will be at the home of Mrs. Landwehr with Mrs. Frank Donley from Spaulding for Children as the guest speaker. Members should bring items for the Social Service for Christmas distribution.

There were 11 members present. Refreshments were served by Mrs. Duane Landwehr and Mrs. Doll. The next meeting will be at the home of Mrs. Landwehr with Mrs. Frank Donley from Spaulding for Children as the guest speaker. Members should bring items for the Social Service for Christmas distribution.

There were 11 members present. Refreshments were served by Mrs. Duane Landwehr and Mrs. Doll. The next meeting will be at the home of Mrs. Landwehr with Mrs. Frank Donley from Spaulding for Children as the guest speaker. Members should bring items for the Social Service for Christmas distribution.

There were 11 members present. Refreshments were served by Mrs. Duane Landwehr and Mrs. Doll. The next meeting will be at the home of Mrs. Landwehr with Mrs. Frank Donley from Spaulding for Children as the guest speaker. Members should bring items for the Social Service for Christmas distribution.

Club, Social Activities

MARION SIMON CIRCLE

Marion Simon Circle of the First United Methodist church met at the home of Mrs. Ruth Wilkinson Oct. 16 with Rena Walworth as co-hostess.

The usual business meeting was held. Devotions were given by Mabel Collins and the program by Dorothy Hadley. Afterwards the meeting closed with a prayer chain.

The November meeting is to be at the home of Rena Walworth on Nov. 20.

WESLEYAN SERVICE GUILD

Wesleyan Service Guild of the United Methodist church were guests of Mrs. Ray Schairer Tuesday, Oct. 15. Nine members and four guests were present.

After refreshments, a short business meeting was conducted by Mrs. LeRoy Hoffman. Programs for the coming year were discussed and a donation to Church Women United for a blanket was approved.

Mrs. Ben Bower chose "Time" for her program theme. The 80th Psalm was read. Her message was summed up by "What happened to neighbors, are we becoming strangers because of a lack of time?"

A circle friendship prayer completed the evening. The next meeting will be at the home of Mrs. Ben Donaldson and So Sun Ha at Cavanaugh Lake, Nov. 19.

SUBURBAN NETTES

A regular meeting of the Chelsea Suburbanettes was held Oct. 17, at 8 p.m. at the home of Mrs. Melvin Leach. Mrs. Jerry Satterthwaite was co-hostess.

The meeting was called to order by the president, Mrs. James Gaken. Two guests were present. Committee reports were made and a letter received from Spaulding for Children was read by the members.

A door prize donated by Mrs. Edward Laubon was won by Mrs. Melvin Leach. The next regular meeting to be held Nov. 21, at the home of Mrs. Arthur Paul will be a crafts night.

After adjournment of the meeting, Dr. Michael Papo presented a film entitled "Parents to Child" and lead a discussion period following the viewing.

Refreshments were served by the co-hostesses.

MARION KLINE CIRCLE

Marion Kline Circle of the Chelsea United Methodist church met at the home of Mrs. Mary Clark on Boyce Rd. She served a luncheon to 18 members and one guest. Co-hostesses were Mrs. Harry Prudden and Mrs. Floyd Roderick.

Mrs. Lloyd Merrell, chairman, opened the meeting with a reading and prayer. The offering toward the Gold Certificates for blankets to go to Church World Service was \$15.

Sexual signed the charter members of the new Women's Society of Christian Service which came about by the unification of the Evangelical United Brethren and Methodist churches last spring.

Mrs. Lyman Adams included the devotion in her reading from a book entitled "You Are My Friend." Mrs. Clarence Lillie read an article on UNICEF.

The next meeting will be Nov. 20 at the Methodist Home. Members of the circle who live at the home will be hostesses for the pot-luck dinner at 12:30 p.m.

TIPS for your TOP from TODDY and FRAN

Counting all the modern innovations science has come up with from paper furniture to space travel, probably none hit us average women closer to home than the easier methods of looking our most attractive best faster. Remember when a permanent was almost a major operation? We sat hooked up to a machine, looking like something from another planet, for what seemed like hours? Having our hair bleached or colored not so long ago was no easy process either! And getting superfluous hair removed from our face... well, who ever heard of it? False eyelashes, wig and wiglets?—they were for movie stars. All this is changed in our favor now. How nice it is! Reaching the moon is secondary to looking pretty on Earth for most of us. We're open evenings (except Saturday) to give you more benefit of beauty science. Give us a call at

Magie Mirror Beauty Salon
Phone 665-0816
5585 Jackson Rd., Ann Arbor

FACULTY WIVES

Chelsea Faculty Wives met at the home of Mrs. Sylvester Wojolicki Monday night. Co-hostess was Mrs. Bruce Galbraith. Members planned the program for the remainder of the year. The meeting was led by the new chairman, Mrs. Ron Milligan.

There was a discussion about a public casserole luncheon to be held at the church in November. There would also be a bake sale and country store at the same time.

Following the meeting the hostess, Mrs. Parks, served a lunch to the group. The November meeting is to be at the parsonage with Mrs. Dan Kellin as hostess.

WOMAN'S CLUB

Speakers of the Woman's Club of Chelsea meeting Oct. 22 were Paul Schable, who discussed "old school days" in the Chelsea area, and Dr. A. A. Palmer whose subject was "horse and buggy doctor."

Schable recounted interesting incidents in his early life as a rural school teacher. Dr. Palmer told of his father's and his own early campaign against disease in spite of muddy roads and lack of modern equipment.

The programs of the club this year are built around the theme "our yesterdays and our tomorrows."

CHILD STUDY CLUB

Chelsea Child Study Club met Tuesday at the home of Mrs. Paul Schable, Jr. Guests were Mrs. Brian French, Mrs. Jerry Giffin, and Mrs. Gerald Linebaugh.

A general business meeting and panel discussion on "Time Management for Busy Mothers" was held. Panel members were Mrs. Robert Robbins, Mrs. Charles Cattell, Mrs. George Knickerbocker and Mrs. William Rademacher.

Refreshments were served by Mrs. Richard Pahey and Mrs. Thomas Donkin.

MODERN MOTHERS

Modern Mothers Child Study Club met at the home of Mrs. Jerry Heller for a Halloween party Tuesday night. The co-hostesses were Mrs. Richard Harvey and Mrs. Don Kvarnberg.

The 12 members present came in costumes and enjoyed Halloween games and refreshments. Winner of the most original costume category was Mrs. Richard Boss as a black cat. Mrs. Darald Fischer was most typical as Caper the ghost. Mrs. Richard Stoll was funniest as Potato Head. Three guest Mrs. James Hammel, Mrs. Vern Otto and Mrs. Philip Hume, were present.

The next meeting will be at the home of Mrs. Paul Weber with Mrs. Richard Boss as co-hostess. The Nov. 12 program will be Christmas decorations with a country market of Christmas decorations members have made.

EPISCOPAL WOMEN

The Women of St. Barnabas held their monthly meeting Thursday at the home of Mrs. Edwin Eaton. The church is having a pot-luck luncheon on Oct. 27 after the Sunday church service.

The ECF members are selling school record books and candy. These items were distributed to the members at the meeting. Final plans were made for the Dec. 5 luncheon and bazaar.

After the meeting Mrs. Eaton showed slides of her trip to Europe and served cider and donuts.

ESTHER CHAPTER

Esther Chapter of the Congregational church met Oct. 17 at the home of Mrs. Vern Parks. Mrs. Al Penhallegan gave the devotion taken from the Daily Word, "How we Can Help Others."

Mrs. Lorriang White, president, was in charge of the meeting. She reported that the church fair was a great success.

There was a discussion about a public casserole luncheon to be held at the church in November. There would also be a bake sale and country store at the same time.

Following the meeting the hostess, Mrs. Parks, served a lunch to the group. The November meeting is to be at the parsonage with Mrs. Dan Kellin as hostess.

BETA SIGMA PHI

Xi Gamma Mu chapter of Beta Sigma Phi met Monday night at the home of Mrs. Mel Trinkle. An invitation from the March of Dimes to tour the Birth Defects Treatment Center at University Hospital was received and several members are planning to take the tour.

The Christmas bazaar will be held at the home of Mrs. Al Hayes on Dec. 2.

Subscribe Today to The Standard!

VIVIAN OTTO CIRCLE

The Vivian Otto Circle of the First United Methodist church met for a pot-luck luncheon and business meeting at the church social center Oct. 16.

Fourteen members attended. Hostesses for the afternoon were Mrs. Ray Tarasow and Mrs. Ralph McCalla. Mrs. Calvin Summers led the program entitled "Americans abroad," and chairman Mrs. Carl Stevens conducted the business meeting. Mrs. Guy Barton, project chairman, discussed plans for the coming season. Sunshine chairman Mrs. Carl Schlosser gave a report on calls made to shut-ins during the past month. The next meeting will be Nov. 20.

Refreshments were served by Mrs. Warren Welton and Mrs. Dale Eisele.

Subscribe Today to The Standard!

SUBURBAN MOTHERS

The Suburban Mothers Child Study Club met Oct. 15 at the home of Mrs. Andrew Policht.

Thirteen members and four guests, Mrs. Robert Thornton, Mrs. Donald Hanson, Mrs. Norman O'Connor and Mrs. Aldwyn Hayes, heard a discussion on the work of Spaulding for Children by Sue Schroen.

Refreshments were served by Mrs. Warren Welton and Mrs. Dale Eisele.

Subscribe Today to The Standard!

WATERLOO BEAUTY SHOP

Operated By Rosemary Klink.

Open Tues. thru Sat., 8 a.m. to 6 p.m.

CALL FOR APPOINTMENT

475-8895



When you give a Bulova watch—any occasion becomes a special event

Select A Watch From the Excellence Collection.

Winans Jewelry Store

*When case, crystal and crown are intact.

Fall Hair-Do

Our operators are trained and experienced with up-to-date hair styles. We also offer service to wigs and wiglets.



Open Monday thru Saturday and Mon., Wed. and Thurs. evenings.

Call 475-5421 for appointments.

VILLAGE BEAUTY SALON

JEAN SWEET, Owner
Operators: Judy, Pansy, Angie, Sandy and Mary.

The Christmas Greeting Only You Can Send!

ORDER YOUR PHOTO GREETING CARDS NOW

Your friends and relatives will treasure a photo greeting made from your favorite negative or slide—color or black-and-white. Visit our Photo Department today to make your choice of sentiment, design, and card style.

FREE

SAMPLE HOLIDAY GREETING CARD

Sample using your own picture, free with every roll of film brought in for developing and printing.

A Gold Seal Photo Special

BUDGET-WISE STORE

"Chelsea's First Discount Store"
116 SOUTH MAIN ST. PHONE GR 9-1611

Don't take chances! Have your RUGS and FURNITURE CLEANED by the "flower-fresh" Absorption Process

Everything cleaned by Duraclean right in your home!

• NO messy soaking
• NO harsh scrubbing
• Furnishings ready for use same day



For FREE quotation call 428-8485 after 5:30 p.m.
DURACLEAN BY WURSTER
810 S. Macomb
Manchester

TIPS for your TOP from TODDY and FRAN

Counting all the modern innovations science has come up with from paper furniture to space travel, probably none hit us average women closer to home than the easier methods of looking our most attractive best faster. Remember when a permanent was almost a major operation? We sat hooked up to a machine, looking like something from another planet, for what seemed like hours? Having our hair bleached or colored not so long ago was no easy process either! And getting superfluous hair removed from our face... well, who ever heard of it? False eyelashes, wig and wiglets?—they were for movie stars. All this is changed in our favor now. How nice it is! Reaching the moon is secondary to looking pretty on Earth for most of us. We're open evenings (except Saturday) to give you more benefit of beauty science. Give us a call at

Magie Mirror Beauty Salon
Phone 665-0816
5585 Jackson Rd., Ann Arbor



